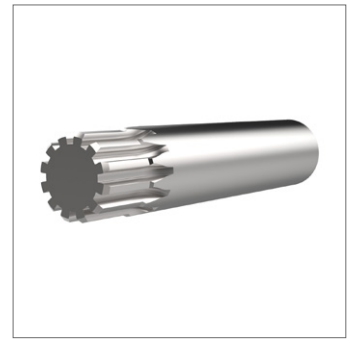
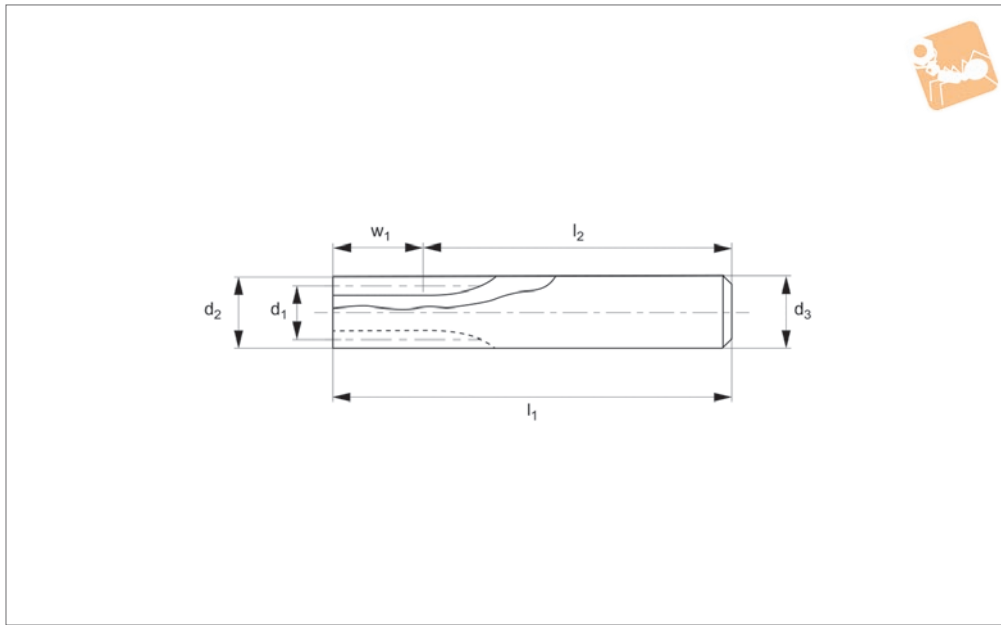




# Spur Gears - Module 0.75 - Steel

carbon steel - 10-12 teeth



**R5137**

STANDARD SPUR GEARS

**Material**

Carbon steel (ISO C45). Accuracy to JIS B 1702-1 (ISO) class 8-9.

**Technical Notes**

20° pressure angle, full depth tooth.  
Amount of backlash when assembling

gears = 0,015 - 0,045mm.

**Tips**

For module 0.75 steel gears with 14-15 teeth, see R5138; for 16-120 teeth, see R5140.  
Max. allowable torque (Nm) is based on

standard operating conditions (see technical pages) with a safety factor of 1.2. For non standard applications apply a suitable safety factor depending on frequency of use, type of working etc.

Order No.	Module	No. of teeth z	Pitch dia. d <sub>1</sub>	d <sub>2</sub>	w <sub>1</sub>	d <sub>3</sub> tol. H8	l <sub>1</sub>	l <sub>2</sub>	Torque Nm max.	Weight g
R5137.075-010	m 0.75	10	7.5	9.0	8	9	55	47	1.06	26.3
R5137.075-012	m 0.75	12	9.5	10.5	8	11	55	47	1.46	39.1