

R3526

Material

Low carbon steel (1018), silver zinc plated.

Technical Notes

To DIN 71803 Form C, *M14x1.5 is a fine pitch thread.

Order No.	d_1 tol. h9	d_2	d_3 $+0.0 -0.2$	h_1 ± 0.3	h_2 ± 0.3	h_3 ± 0.3	h_4 $+0.4 -0.0$	h_5 max.	A/F	Weight g
R3526.005	8.0	M5	8.0	9.0	10.2	12.5	2.0	4.0	7.0	4.5
R3526.006	10.0	M6	10.0	11.0	12.5	15.5	2.2	4.0	8.0	8.5
R3526.008	13.0	M8	13.0	13.0	16.5	18.5	2.4	5.3	11.0	17.7
R3526.010	16.0	M10	16.0	16.0	20.0	23.0	2.7	7.3	13.0	35.0
R3526.012	16.0	M12	16.0	16.0	20.0	23.0	2.7	7.3	13.0	35.0
R3526.014	19.0	M14 x 1.5*	19.0	20.0	28.0	28.5	3.0	10.8	16.0	71.2
R3526.015	19.0	M14	19.0	20.0	28.0	28.5	3.0	10.8	16.0	71.2
R3526.016	19.0	M16	19.0	20.0	28.0	28.5	3.0	10.8	16.0	71.2



Parts overview

Clevis Joints

Stocked to DIN 71752 in steel and stainless steel. Plain clevis joints available in right and left hand threads zinc plated steel and stainless steel. Steel sizes from M4 up to M48. Stainless sizes from M4 up to M27.



Clevis Mating Pieces

These are designed to fit in between our clevis joints to create a linkage where an angular offset is required. Available in zinc plated steel and stainless steel. Sizes M4 up to M20.



Clevis Pins and Clips

Various styles of pins and clips to suit clevis joints in zinc plated steel and stainless steel. Sizes available to suit all sizes of clevis joints that we offer.



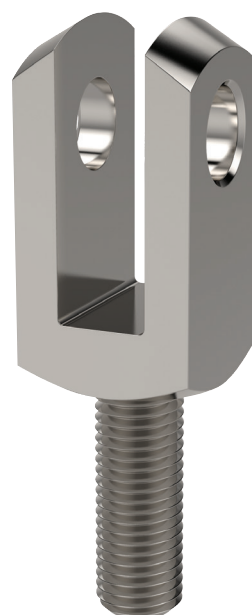
Clevis Retention Clips

These are the most popular type of clip used with our clevis joints. They create a neat compact assembly, only available in zinc plated steel. Size available for clevis joints from 4mm up to 20mm.



Male Clevis Joints

Stocked in zinc plated steel and stainless steel, right and left hand threads. Sizes M6 up to M20.





Clevis Joints

set-up options

Materials Handling

Clevis with retention clip
65630 and **65684**



Clevis with clevis pin,
washer and cotter pin
65660 and **65674**



Zinc plated steel

Clevis with clevis pin **65664**
Safety fastener **65680**



Clevis with clevis pin
and circlips **65666**
and **65678**



Clevis with clevis pin,
washer and cotter pin
65661 and **65675**



Stainless steel

Clevis with **65652**
mating piece
and **65684** clevis
retention clip



Clevis with **65880**
rod end and **65684**
clevis retention clip



Assembly options

Tensile tests, statistically to failure (break)

Clevis joints axially loaded.

Leaded low carbon steel (AISI 12L14, 1.0718).

Clevises M6 - M42

Material

Clevis size	F min (kN)	F max (kN)	F average value (kN)	Avg. force when clevis starts to deform (kN)
6 x 24 M 6	16,0	19,5	17,6	15,3
8 x 32 M 8	33,2	35,6	34,6	29,3
10 x 40 M10	42,0	52,0	47,5	41,3
12 x 48 M12	53,0	68,5	61,1	50,2
14 x 56 M14	60,5	64,5	63,0	48,8
16 x 64 M16	133,5	146,0	140,2	115
20 x 40 M20	194,5	234,0	213,5	176
25 x 50 M25	311,0	336,0	328,0	260
30 x 60 M30	428,0	450,0	440,6	343
36 x 72 M36	566,0	573,0	569,5	300
35 x 72 M36	561,2	567,9	564,6	370
42 x 84 M42	904,6	904,6	904,6	420

Important note: values in this table are indicative only and should only be used as a rough guide. The Company cannot foresee the intended applications of their products and we accept no liability for any actions taken by third parties. Customers are advised to use their own safety factors and/or perform their own testing on the clevis joint to ensure it meets requirements for their application.