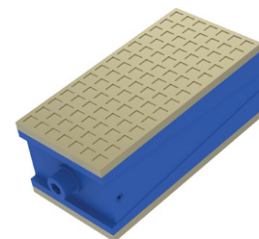
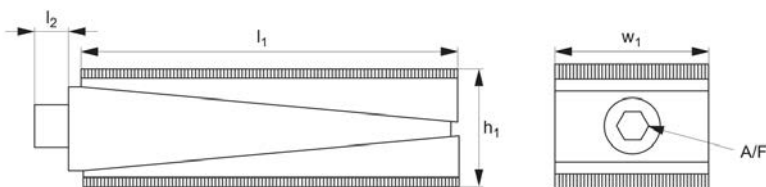




Wedge Mounts anti-vibration



Levelling Feet



P2170

LEVELLING FEET

Material

Cast body, coated, with rubber base (65 Shore A) or harder polyurethane base (90 Shore A).

Technical Notes

For leveling and vibration dampening of

heavy loads. Adjustment by means of allen key on side.

Adjustment is $\pm 5\text{mm}$ or $\pm 10\text{mm}$ depending on version selected - see table.

Tips

The rubber base versions have lower load carrying capacity but are less expensive than the polyurethane versions.

Studded version available on the website.

Order No.	h_1	l_1	w_1	l_2	A/F	Base material	Load range kgf
P2170.R150	60 \pm 5	150	75	12	12	Rubber	500 - 1000
P2170.P150	60 \pm 5	150	75	12	12	Polyurethane	700 - 2500
P2170.R220	70 \pm 10	200	100	12	12	Rubber	1500 - 3000
P2170.P220	70 \pm 10	200	100	12	12	Polyurethane	3000 - 6000