



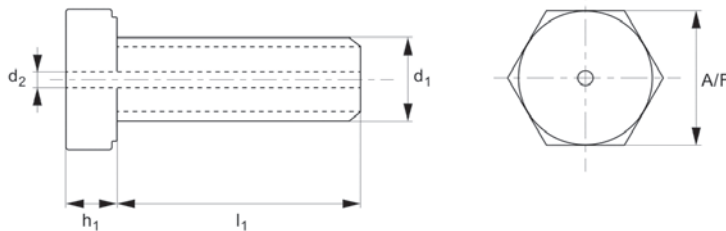
# Vented Screws - Hex. Head

316 stainless

## Vented Screws



### P0091.A4



VENTED SCREWS

#### Material

Stainless steel (AISI 316, 1.4401), strength class 60.  
Ultrasonically cleaned.

#### Technical Notes

To DIN 933 (with central vent). Other sizes

available on request.

#### Tips

These products help eliminate virtual leaks from high vacuum (HV and UHV) systems, thereby improving pump-down times. Trapped gases at the bottom of a tapped

hole are able to escape via the central vent down the middle of the screw.

Order No.	$l_1$	$d_1$	$d_2$	$h_1$	A/F
P0091.030-005-A4	5	M 3	1.0	2.0	5
P0091.030-006-A4	6	M 3	1.0	2.0	5
P0091.030-008-A4	8	M 3	1.0	2.0	5
P0091.030-010-A4	10	M 3	1.0	2.0	5
P0091.030-012-A4	12	M 3	1.0	2.0	5
P0091.030-016-A4	16	M 3	1.0	2.0	5
P0091.040-005-A4	5	M 4	1.0	2.8	7
P0091.040-006-A4	6	M 4	1.0	2.8	7
P0091.040-008-A4	8	M 4	1.0	2.8	7
P0091.040-010-A4	10	M 4	1.0	2.8	7
P0091.040-012-A4	12	M 4	1.0	2.8	7
P0091.040-016-A4	16	M 4	1.0	2.8	7
P0091.040-020-A4	20	M 4	1.0	2.8	7
P0091.040-025-A4	25	M 4	1.0	2.8	7
P0091.040-030-A4	30	M 4	1.0	2.8	7
P0091.040-035-A4	35	M 4	1.0	2.8	7
P0091.050-006-A4	6	M 5	1.3	3.5	8
P0091.050-008-A4	8	M 5	1.3	3.5	8
P0091.050-010-A4	10	M 5	1.3	3.5	8
P0091.050-012-A4	12	M 5	1.3	3.5	8
P0091.050-016-A4	16	M 5	1.3	3.5	8
P0091.050-020-A4	20	M 5	1.3	3.5	8
P0091.050-025-A4	25	M 5	1.3	3.5	8
P0091.050-030-A4	30	M 5	1.3	3.5	8
P0091.050-035-A4	35	M 5	1.3	3.5	8
P0091.050-040-A4	40	M 5	1.3	3.5	8
P0091.060-008-A4	8	M 6	1.6	4.0	10
P0091.060-010-A4	10	M 6	1.6	4.0	10
P0091.060-012-A4	12	M 6	1.6	4.0	10
P0091.060-016-A4	16	M 6	1.6	4.0	10
P0091.060-020-A4	20	M 6	1.6	4.0	10
P0091.060-025-A4	25	M 6	1.6	4.0	10



VENTED SCREWS

Order No.	l <sub>1</sub>	d <sub>1</sub>	d <sub>2</sub>	h <sub>1</sub>	A/F
P0091.060-030-A4	30	M 6	1.6	4.0	10
P0091.060-035-A4	35	M 6	1.6	4.0	10
P0091.060-040-A4	40	M 6	1.6	4.0	10
P0091.060-045-A4	45	M 6	1.6	4.0	10
P0091.060-050-A4	50	M 6	1.6	4.0	10
P0091.080-012-A4	12	M 8	1.8	5.3	13
P0091.080-016-A4	16	M 8	1.8	5.3	13
P0091.080-020-A4	20	M 8	1.8	5.3	13
P0091.080-025-A4	25	M 8	1.8	5.3	13
P0091.080-030-A4	30	M 8	1.8	5.3	13
P0091.080-035-A4	35	M 8	1.8	5.3	13
P0091.080-040-A4	40	M 8	1.8	5.3	13
P0091.080-045-A4	45	M 8	1.8	5.3	13
P0091.080-050-A4	50	M 8	1.8	5.3	13
P0091.080-055-A4	55	M 8	1.8	5.3	13
P0091.100-016-A4	16	M10	1.8	6.4	17
P0091.100-020-A4	20	M10	1.8	6.4	17
P0091.100-025-A4	25	M10	1.8	6.4	17
P0091.100-030-A4	30	M10	1.8	6.4	17
P0091.100-035-A4	35	M10	1.8	6.4	17
P0091.100-040-A4	40	M10	1.8	6.4	17
P0091.100-045-A4	45	M10	1.8	6.4	17
P0091.100-050-A4	50	M10	1.8	6.4	17
P0091.100-055-A4	55	M10	1.8	6.4	17
P0091.100-060-A4	60	M10	1.8	6.4	17
P0091.120-020-A4	20	M12	1.8	7.5	19
P0091.120-025-A4	25	M12	1.8	7.5	19
P0091.120-030-A4	30	M12	1.8	7.5	19
P0091.120-035-A4	35	M12	1.8	7.5	19
P0091.120-040-A4	40	M12	1.8	7.5	19
P0091.120-045-A4	45	M12	1.8	7.5	19
P0091.120-050-A4	50	M12	1.8	7.5	19
P0091.120-060-A4	60	M12	1.8	7.5	19
P0091.160-025-A4	25	M16	1.8	10.0	24
P0091.160-030-A4	30	M16	1.8	10.0	24
P0091.160-035-A4	35	M16	1.8	10.0	24
P0091.160-040-A4	40	M16	1.8	10.0	24
P0091.160-045-A4	45	M16	1.8	10.0	24
P0091.160-050-A4	50	M16	1.8	10.0	24
P0091.160-060-A4	60	M16	1.8	10.0	24