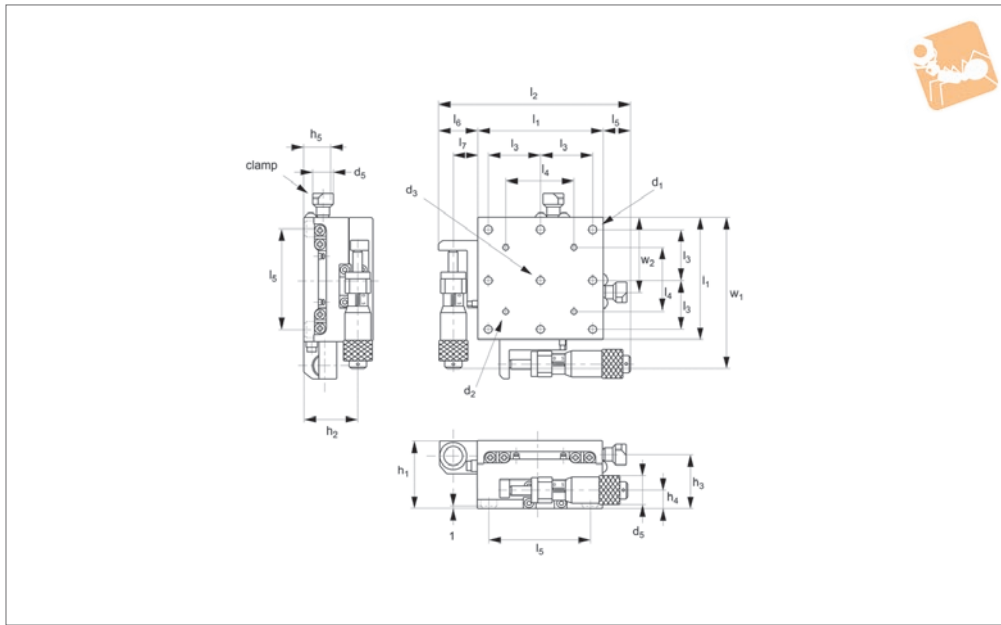




# Stainless Micrometer XY Stages

side drive

# Manual Positioning Stages



**L3123**

MANUAL POSITIONING STAGES

### Material

Stainless steel (440C) with electroless nickel plating.

### Technical Notes

Straightness accuracy 5 $\mu$ .

Spring loaded micrometer allows precise repeatable adjustments with low friction and zero backlash.

Micrometer increments 0,01mm.

### Important Notes

Stroke is centred on the mid-point of the slides (ie 50% of total stroke each way).

**3D CAD available.**

Order No.	Travel	$d_1$	$d_2$	$d_3$	$d_4$	$d_5$	$h_1$	$h_2$	$h_3$	$h_4$	$h_5$
L3123.040	13	M3	-	4	13	10	32.0	25.0	26.5	9	10.5
L3123.060	13	M4	M3	4	13	10	32.0	25.0	26.5	9	10.5
L3123.080	25	M4	M4	4	13	10	40.0	30.8	34.5	10.8	14.5
L3123.100	25	M4	M4	4	13	10	40.0	30.8	34.5	10.8	14.5

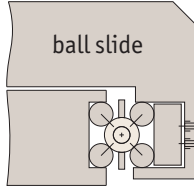
Order No.	$l_1$	$l_2$	$l_3$	$l_4$	$l_5$	$l_6$	$l_7$	$w_1$	Load kg max.
L3123.040	40	82.3	16	-	23.8	18.5	12	75	9.7
L3123.060	60	92.3	25	32	13.8	18.5	12	73.75	19.6
L3123.080	80	136	25	70	32.5	23.5	17	123.7	26.1
L3123.100	100	141	25	90	17.5	23.5	17	128.7	33.6



There are two different load ratings for these stages.

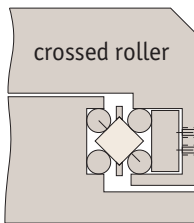
### Ball slides:

These have precision steel balls rolling in the tracks. They are the least expensive, loads up to 28Kg.



### Cross roller slides:

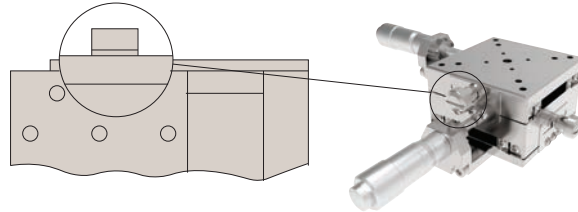
These have the same dimensions but have rollers allowing the slide to carry large loads and absorb greater moment loads up to 54Kg.



### Locking options

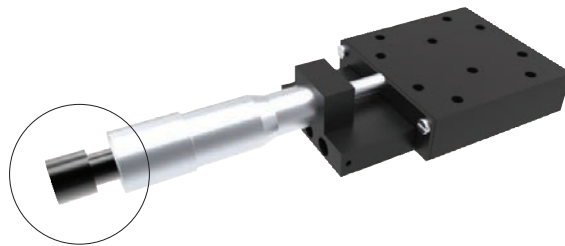
#### Posi-lock:

Allows locking of the carriage in place with a friction locking mechanism.



#### Locking micrometer:

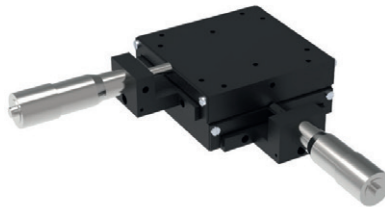
Locking of the micrometer to fix the micrometer setting.



### Front drive micrometer positioning stages



X Stage



XY Stage

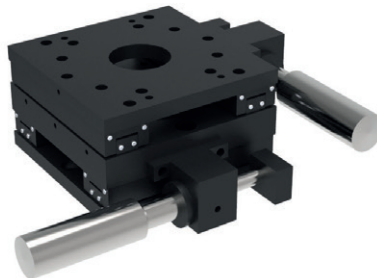


XYZ Stage

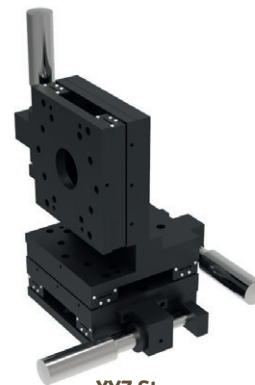
### Side drive micrometer positioning stages



X Stage



XY Stage



XYZ Stage

Also available in stainless steel.