



Micrometer Positioning XY, XYZ

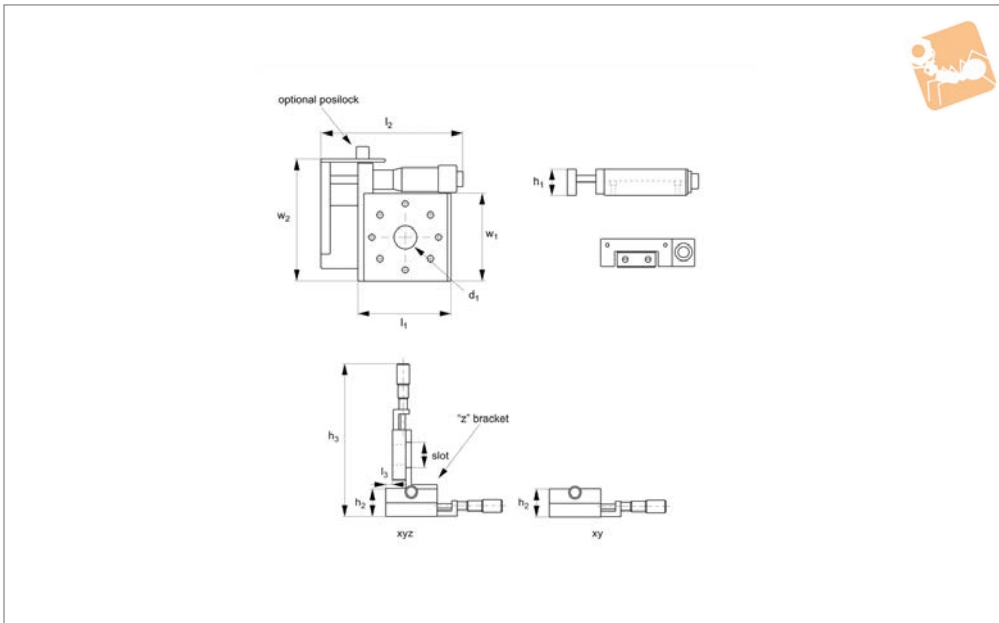
side drive, large sizes

Manual Positioning Stages



L3113

MANUAL POSITIONING STAGES



Material

Aluminium carriage and base, black anodised steel fixing, hardened steel shafts and balls and roller elements

Technical Notes

Ball roller versions recommended for light loads. Cross roller versions for heavier loads and moment loads.

Straight line accuracy 12µ/25mm travel. Repeatability 3µ.

Spring loaded micrometer allows precise repeatable adjustments with low friction and zero backlash.

Micrometer increments 0,01mm.

For further fixing and mounting hole dimensions please see part number L3100.FH.

Tips

Other options:
- LM (locking micrometer).

- PL (posi-lock carriage lock).

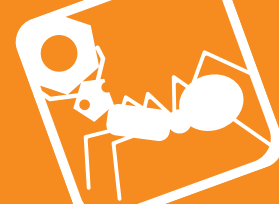
Loads on the Z axis may extend springs if the loads are too heavy. These stages have the micrometer bracket reversed to prevent this and increase the Z load capacity.

Important Notes

Stroke is centred on the mid-point of the slides (ie 50% of total stroke each way).

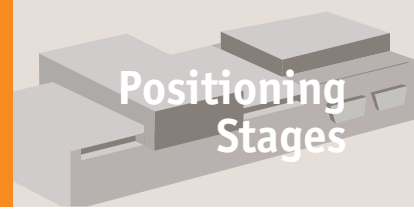
3D CAD available.

Order No.	Type	Travel	h ₁	h ₂	h ₃	l ₁	l ₂	l ₃	w ₁	Weight kg
L3113.1201-XYB	XY Ball	25	23.1	46.2	-	79.2	120.7	-	79.2	13.6
L3113.1203-XYB	XY Ball	25	23.1	46.2	-	79.2	120.7	-	79.2	13.6
L3113.2201-XYB	XY Ball	25	23.1	46.2	-	104.6	120.7	-	104.6	13.6
L3113.2202-XYB	XY Ball	50	23.1	46.2	-	104.6	171.7	-	104.6	13.6
L3113.2203-XYB	XY Ball	25	23.1	46.2	-	104.6	120.7	-	104.6	13.6
L3113.2204-XYB	XY Ball	50	23.1	46.2	-	104.6	171.7	-	104.6	13.6
L3113.3201-XYB	XY Ball	25	23.1	46.2	-	130.0	130.0	-	130.0	13.6
L3113.3202-XYB	XY Ball	50	23.1	46.2	-	130.0	171.7	-	130.0	13.6
L3113.3203-XYB	XY Ball	25	23.1	46.2	-	130.0	130.0	-	130.0	13.6
L3113.3204-XYB	XY Ball	50	23.1	46.2	-	130.0	171.7	-	130.0	13.6
L3113.1201-XYR	XY Roller	25	23.1	46.2	-	79.2	120.7	-	79.2	38.5
L3113.1203-XYR	XY Roller	25	23.1	46.2	-	79.2	120.7	-	79.2	38.5
L3113.2201-XYR	XY Roller	25	23.1	46.2	-	104.6	120.7	-	104.6	38.5
L3113.2202-XYR	XY Roller	50	23.1	46.2	-	104.6	171.7	-	104.6	38.5
L3113.2203-XYR	XY Roller	25	23.1	46.2	-	104.6	120.7	-	104.6	38.5
L3113.2204-XYR	XY Roller	50	23.1	46.2	-	104.6	171.7	-	104.6	38.5
L3113.3201-XYR	XY Roller	25	23.1	46.2	-	130.0	130.0	-	130.0	38.5
L3113.3202-XYR	XY Roller	50	23.1	46.2	-	130.0	171.7	-	130.0	38.5
L3113.3203-XYR	XY Roller	25	23.1	46.2	-	130.0	130.0	-	130.0	38.5
L3113.3204-XYR	XY Roller	50	23.1	46.2	-	130.0	171.7	-	130.0	38.5
L3113.1201-XYZB	XYZ Ball	25	23.1	46.2	186.2	79.2	120.7	8.4	79.2	13.6
L3113.1203-XYZB	XYZ Ball	25	23.1	46.2	186.2	79.2	120.7	8.4	79.2	13.6
L3113.2201-XYZB	XYZ Ball	25	23.1	46.2	198.9	104.6	120.7	13.2	104.6	13.6
L3113.2202-XYZB	XYZ Ball	50	23.1	46.2	249.9	104.6	171.7	13.2	104.6	13.6
L3113.2203-XYZB	XYZ Ball	25	23.1	46.2	198.9	104.6	120.7	13.2	104.6	13.6
L3113.2204-XYZB	XYZ Ball	50	23.1	46.2	249.9	104.6	171.7	13.2	104.6	13.6



Order No.	Type	Travel	h ₁	h ₂	h ₃	l ₁	l ₂	l ₃	w ₁	Weight kg
L3113.3201-XYZB	XYZ Ball	25	23.1	46.2	208.2	130.0	130.0	27.7	130.0	13.6
L3113.3202-XYZB	XYZ Ball	50	23.1	46.2	249.9	130.0	171.7	27.7	130.0	13.6
L3113.3203-XYZB	XYZ Ball	25	23.1	46.2	208.2	130.0	130.0	27.7	130.0	13.6
L3113.3204-XYZB	XYZ Ball	50	23.1	46.2	249.9	130.0	171.7	27.7	130.0	13.6
L3113.1201-XYZR	XYZ Roller	25	23.1	46.2	186.2	79.2	120.7	8.4	79.2	38.5
L3113.1203-XYZR	XYZ Roller	25	23.1	46.2	186.2	79.2	120.7	8.4	79.2	38.5
L3113.2201-XYZR	XYZ Roller	25	23.1	46.2	198.9	104.6	120.7	13.2	104.6	38.5
L3113.2202-XYZR	XYZ Roller	50	23.1	46.2	249.9	104.6	171.7	13.2	104.6	38.5
L3113.2203-XYZR	XYZ Roller	25	23.1	46.2	198.9	104.6	120.7	13.2	104.6	38.5
L3113.2204-XYZR	XYZ Roller	50	23.1	46.2	249.9	104.6	171.7	13.2	104.6	38.5
L3113.3201-XYZR	XYZ Roller	25	23.1	46.2	208.2	130.0	130.0	27.7	130.0	38.5
L3113.3202-XYZR	XYZ Roller	50	23.1	46.2	249.9	130.0	171.7	27.7	130.0	38.5
L3113.3203-XYZR	XYZ Roller	25	23.1	46.2	208.2	130.0	130.0	27.7	130.0	38.5
L3113.3204-XYZR	XYZ Roller	50	23.1	46.2	249.9	130.0	171.7	27.7	130.0	38.5

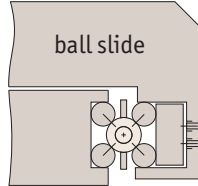
Order No.	w ₂	Through hole d ₁	Load Z kg max.	Load X & Y kg max.	X moment load Nm max.	Y moment load Nm max.	Z moment load Nm max.
L3113.1201-XYB	102.6	-	13.6	13.6	2.05	1.95	1.95
L3113.1203-XYB	102.6	25	13.6	13.6	2.05	1.95	1.95
L3113.2201-XYB	128.0	-	13.6	13.6	3.21	3.04	3.04
L3113.2202-XYB	128.0	-	13.6	13.6	3.21	3.04	3.04
L3113.2203-XYB	128.0	38	13.6	13.6	3.21	3.04	3.04
L3113.2204-XYB	128.0	38	13.6	13.6	3.21	3.04	3.04
L3113.3201-XYB	153.4	-	13.6	13.6	4.25	4.05	4.05
L3113.3202-XYB	153.4	-	13.6	13.6	4.25	4.05	4.05
L3113.3203-XYB	153.4	51	13.6	13.6	4.25	4.05	4.05
L3113.3204-XYB	153.4	51	13.6	13.6	4.25	4.05	4.05
L3113.1201-XYR	102.6	-	13.6	38.5	5.81	5.53	5.53
L3113.1203-XYR	102.6	25	13.6	38.5	5.81	5.53	5.53
L3113.2201-XYR	128.0	-	13.6	38.5	9.10	8.60	8.60
L3113.2202-XYR	128.0	-	13.6	38.5	9.10	8.60	8.60
L3113.2203-XYR	128.0	38	13.6	38.5	9.10	8.60	8.60
L3113.2204-XYR	128.0	38	13.6	38.5	9.10	8.60	8.60
L3113.3201-XYR	153.4	-	13.6	38.5	12.05	11.47	11.47
L3113.3202-XYR	153.4	-	13.6	38.5	12.05	11.47	11.47
L3113.3203-XYR	153.4	51	13.6	38.5	12.05	11.47	11.47
L3113.3204-XYR	153.4	51	13.6	38.5	12.05	11.47	11.47
L3113.1201-XYZB	102.6	-	13.6	13.6	2.05	1.95	1.95
L3113.1203-XYZB	102.6	25	13.6	13.6	2.05	1.95	1.95
L3113.2201-XYZB	128.0	-	13.6	13.6	3.21	3.04	3.04
L3113.2202-XYZB	128.0	-	13.6	13.6	3.21	3.04	3.04
L3113.2203-XYZB	128.0	38	13.6	13.6	3.21	3.04	3.04
L3113.2204-XYZB	128.0	38	13.6	13.6	3.21	3.04	3.04
L3113.3201-XYZB	153.4	-	13.6	13.6	4.25	4.05	4.05
L3113.3202-XYZB	153.4	-	13.6	13.6	4.25	4.05	4.05
L3113.3203-XYZB	153.4	51	13.6	13.6	4.25	4.05	4.05
L3113.3204-XYZB	153.4	51	13.6	13.6	4.25	4.05	4.05
L3113.1201-XYZR	102.6	-	13.6	38.5	5.81	5.53	5.53
L3113.1203-XYZR	102.6	25	13.6	38.5	5.81	5.53	5.53
L3113.2201-XYZR	128.0	-	13.6	38.5	9.10	8.60	8.60
L3113.2202-XYZR	128.0	-	13.6	38.5	9.10	8.60	8.60
L3113.2203-XYZR	128.0	38	13.6	38.5	9.10	8.60	8.60
L3113.2204-XYZR	128.0	38	13.6	38.5	9.10	8.60	8.60
L3113.3201-XYZR	153.4	-	13.6	38.5	12.05	11.47	11.47
L3113.3202-XYZR	153.4	-	13.6	38.5	12.05	11.47	11.47
L3113.3203-XYZR	153.4	51	13.6	38.5	12.05	11.47	11.47
L3113.3204-XYZR	153.4	51	13.6	38.5	12.05	11.47	11.47



There are two different load ratings for these stages.

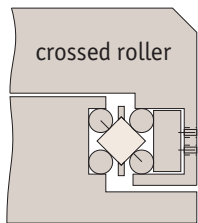
Ball slides:

These have precision steel balls rolling in the tracks. They are the least expensive, loads up to 28Kg.



Cross roller slides:

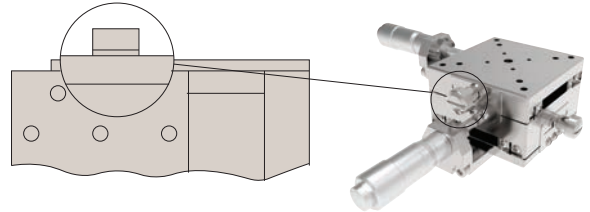
These have the same dimensions but have rollers allowing the slide to carry large loads and absorb greater moment loads up to 54Kg.



Locking options

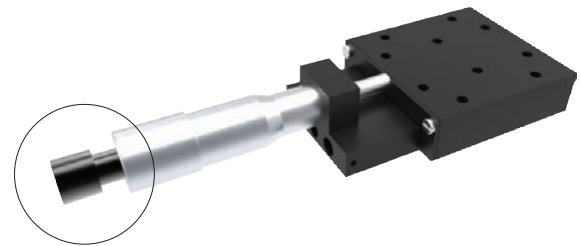
Posi-lock:

Allows locking of the carriage in place with a friction locking mechanism.



Locking micrometer:

Locking of the micrometer to fix the micrometer setting.



Front drive micrometer positioning stages



X Stage

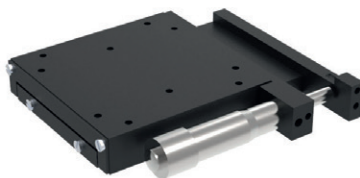


XY Stage

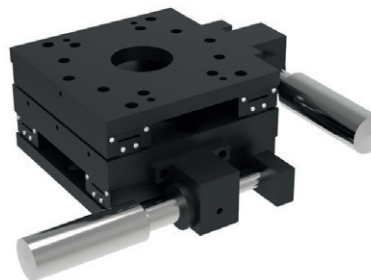


XYZ Stage

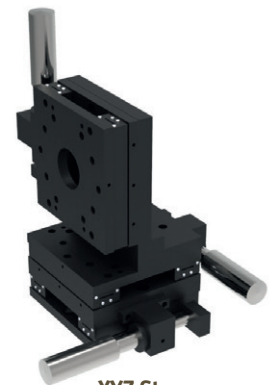
Side drive micrometer positioning stages



X Stage



XY Stage



XYZ Stage

Also available in stainless steel.