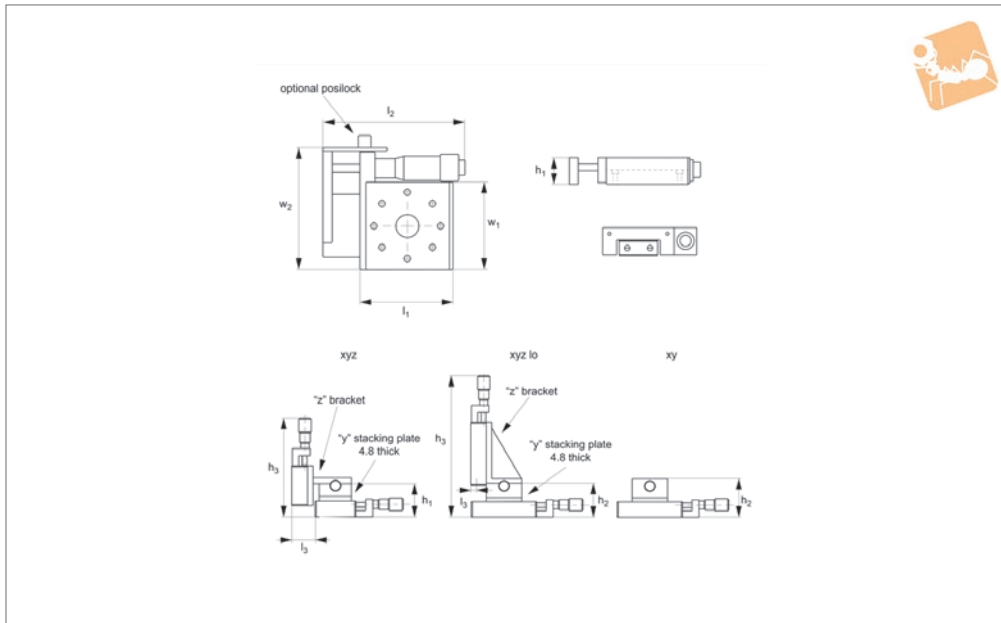




Micrometer Positioning XY, XYZ

side drive, medium sizes

Manual Positioning Stages



L3112

MANUAL POSITIONING STAGES

Material

Aluminium carriage and base, black anodised steel fixing, hardened steel shafts and balls and roller elements

Technical Notes

Ball roller versions recommended for light loads. Cross roller versions for heavier loads and moment loads.

Straight line accuracy 12µ/25mm travel. Repeatability 3µ.

Spring loaded micrometer allows precise repeatable adjustments with low friction and zero backlash.

Micrometer increments 0,01mm.

For further fixing and mounting hole dimensions please see part number L3100.FH.

Tips

Other options:
- LM (locking micrometer).

- PL (posi-lock carriage lock).

Loads on the Z axis may extend springs if the loads are too heavy. These stages have the micrometer bracket reversed to prevent this and increase the Z load capacity.

Important Notes

Stroke is centred on the mid-point of the slides (ie 50% of total stroke each way).

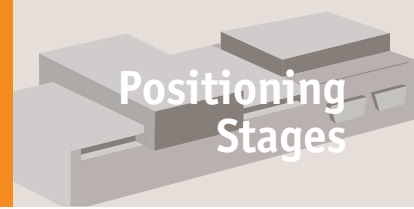
3D CAD available.

Order No.	Type	Travel	h ₁	h ₂	h ₃	l ₁	l ₂	l ₃	w ₁	Weight kg
L3112.0401-XYB	XY Ball	13	19.1	42.9	-	50.8	74.9	-	44.5	9.1
L3112.0501-XYB	XY Ball	13	19.1	42.9	-	82.6	105.4	-	44.5	19.0
L3112.0502-XYB	XY Ball	25	19.1	42.9	-	82.6	114.5	-	44.5	19.0
L3112.0701-XYB	XY Ball	13	25.4	55.6	-	101.6	124.5	-	66.5	27.2
L3112.0702-XYB	XY Ball	25	25.4	55.6	-	101.6	131.6	-	66.5	27.2
L3112.0401-XYR	XY Roller	13	19.1	42.9	-	50.8	74.9	-	44.5	18.1
L3112.0501-XYR	XY Roller	13	19.1	42.9	-	82.6	105.4	-	44.5	36.3
L3112.0502-XYR	XY Roller	25	19.1	42.9	-	82.6	114.5	-	44.5	36.3
L3112.0701-XYR	XY Roller	13	25.4	55.6	-	101.6	124.5	-	66.5	72.5
L3112.0702-XYR	XY Roller	25	25.4	55.6	-	101.6	131.6	-	66.5	72.5
L3112.0401-XYZB	XYZ Ball	13	19.1	42.9	124.2	50.8	74.9	14.6	44.5	9.1
L3112.0501-XYZB	XYZ Ball	13	19.1	42.9	154.7	82.6	105.4	0	44.5	19.0
L3112.0502-XYZB	XYZ Ball	25	19.1	42.9	163.8	82.6	114.5	0	44.5	19.0
L3112.0701-XYZB	XYZ Ball	13	25.4	55.6	189.5	101.6	124.5	9.3	66.5	27.2
L3112.0702-XYZB	XYZ Ball	25	25.4	55.6	196.6	101.6	131.6	9.3	66.5	27.2
L3112.0401-XYZR	XYZ Roller	13	19.1	42.9	124.2	50.8	74.9	14.6	44.5	18.1
L3112.0501-XYZR	XYZ Roller	13	19.1	42.9	154.7	82.6	105.4	0	44.5	36.3
L3112.0502-XYZR	XYZ Roller	25	19.1	42.9	163.8	82.6	114.5	0	44.5	36.3
L3112.0701-XYZR	XYZ Roller	13	25.4	55.6	189.5	101.6	124.5	9.3	66.5	72.5
L3112.0702-XYZR	XYZ Roller	25	25.4	55.6	196.6	101.6	131.6	9.3	66.5	72.5

Order No.	w ₂	Load Z kg max.	Load X & Y kg max.	X moment load Nm max.	Y moment load Nm max.	Z moment load Nm max.
L3112.0401-XYB	61.0	9.0	9.1	0.96	0.96	0.96
L3112.0501-XYB	61.0	9.0	19.0	2.02	2.02	2.02



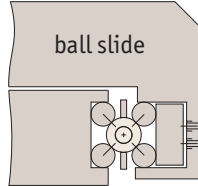
Order No.	w ₂	Load Z kg max.	Load X & XY kg max.	X moment load Nm max.	Y moment load Nm max.	Z moment load Nm max.
L3112.0502-XYB	64.8	9.0	19.0	2.02	2.02	2.02
L3112.0701-XYB	84.1	9.0	27.2	4.94	4.94	4.94
L3112.0702-XYB	87.1	9.0	27.2	4.94	4.94	4.94
L3112.0401-XYR	61.0	9.0	18.1	1.92	1.92	1.92
L3112.0501-XYR	61.0	9.0	36.3	3.84	3.84	3.84
L3112.0502-XYR	64.8	9.0	36.3	3.84	3.84	3.84
L3112.0701-XYR	84.1	9.0	72.5	13.18	13.18	13.18
L3112.0702-XYR	87.1	9.0	72.5	13.18	13.18	13.18
L3112.0401-XYZB	61.0	9.0	9.1	0.96	0.96	0.96
L3112.0501-XYZB	61.0	9.0	19.0	2.02	2.02	2.02
L3112.0502-XYZB	64.8	9.0	19.0	2.02	2.02	2.02
L3112.0701-XYZB	84.1	9.0	27.2	4.94	4.94	4.94
L3112.0702-XYZB	87.1	9.0	27.2	4.94	4.94	4.94
L3112.0401-XYZR	61.0	9.0	18.1	1.92	1.92	1.92
L3112.0501-XYZR	61.0	9.0	36.3	3.84	3.84	3.84
L3112.0502-XYZR	64.8	9.0	36.3	3.84	3.84	3.84
L3112.0701-XYZR	84.1	9.0	72.5	13.18	13.18	13.18
L3112.0702-XYZR	87.1	9.0	72.5	13.18	13.18	13.18



There are two different load ratings for these stages.

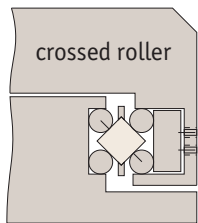
Ball slides:

These have precision steel balls rolling in the tracks. They are the least expensive, loads up to 28Kg.



Cross roller slides:

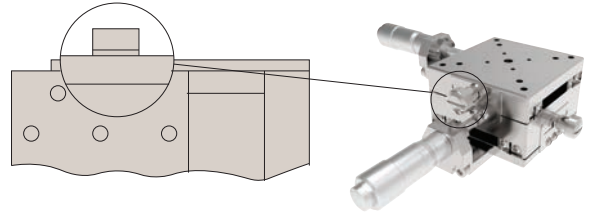
These have the same dimensions but have rollers allowing the slide to carry large loads and absorb greater moment loads up to 54Kg.



Locking options

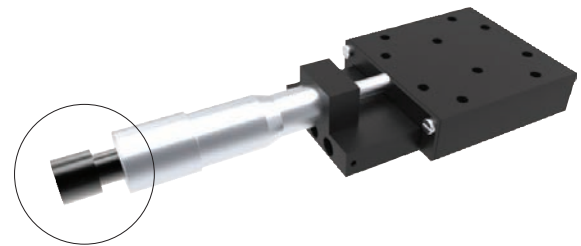
Posi-lock:

Allows locking of the carriage in place with a friction locking mechanism.



Locking micrometer:

Locking of the micrometer to fix the micrometer setting.



Front drive micrometer positioning stages



X Stage

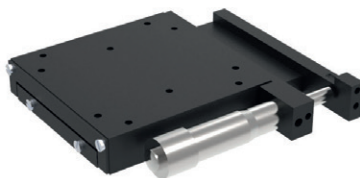


XY Stage

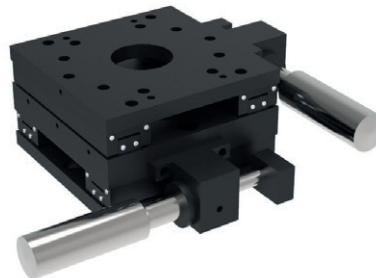


XYZ Stage

Side drive micrometer positioning stages



X Stage



XY Stage



XYZ Stage

Also available in stainless steel.