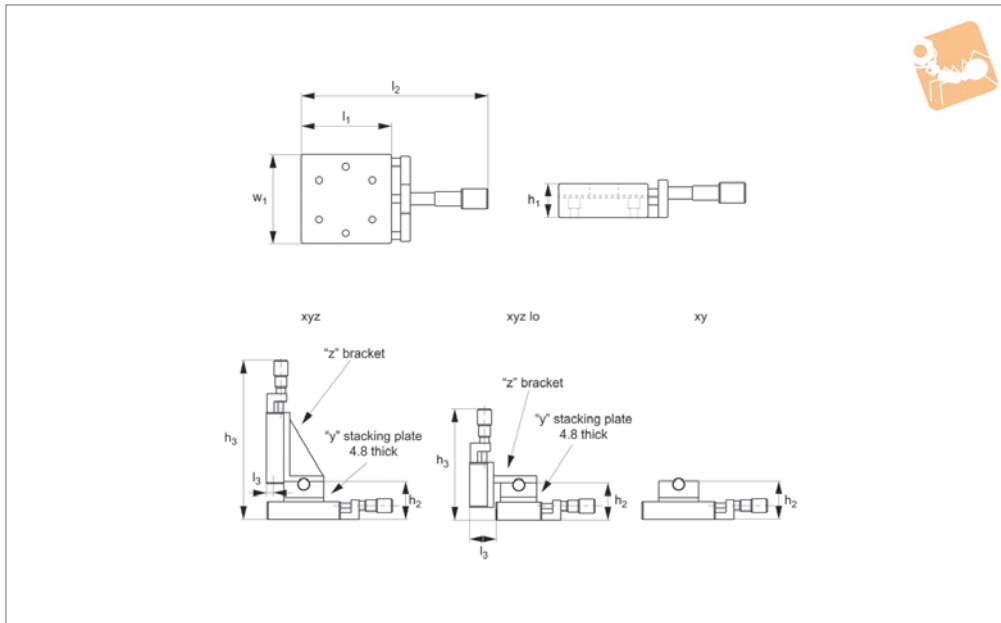
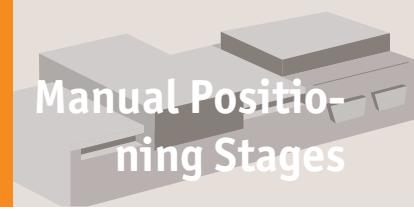




# Micrometer Positioning XY, XYZ

front drive, medium sizes

# Manual Positioning Stages



## L3107

MANUAL POSITIONING STAGES

### Material

Aluminium carriage and base, black anodised steel fixing, hardened steel shafts and balls and roller elements.

### Technical Notes

Ball roller versions recommended for light loads. Cross roller versions for heavier loads and moment loads.

Straight line accuracy 12µ/25mm travel. Repeatability 3µ.

Spring loaded micrometer allows precise repeatable adjustments with low friction and zero backlash.

Micrometer increments 0,01mm.

**For further fixing and mounting hole dimensions please see part number L3100.FH.**

### Tips

Other options:  
- LM (locking micrometer).

- PL (posi-lock carriage lock).

Loads on the Z axis may extend springs if the loads are too heavy. These stages have the micrometer bracket reversed to prevent this and increase the Z load capacity.

### Important Notes

Stroke is centred on the mid-point of the slides (ie 50% of total stroke each way).

**3D CAD available.**

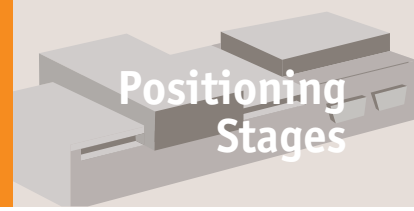
Order No.	Type	Travel	h <sub>1</sub>	h <sub>2</sub>	h <sub>3</sub>	l <sub>1</sub>	l <sub>2</sub>	l <sub>3</sub>	w <sub>1</sub>	Weight kg
L3107.0401-XYB	XY Ball	13	19.1	42.9	-	50.8	117.3	-	44.5	9.1
L3107.0501-XYB	XY Ball	13	19.1	42.9	-	82.6	148.8	-	44.5	19.0
L3107.0502-XYB	XY Ball	25	19.1	42.9	-	82.6	188.2	-	44.5	19.0
L3107.0701-XYB	XY Ball	13	25.4	55.6	-	101.6	168.1	-	66.5	27.2
L3107.0702-XYB	XY Ball	25	25.4	55.6	-	101.6	209.6	-	66.5	27.2
L3107.0401-XYR	XY Roller	13	19.1	42.9	-	50.8	117.3	-	44.5	18.1
L3107.0501-XYR	XY Roller	13	19.1	42.9	-	82.6	148.8	-	44.5	36.3
L3107.0502-XYR	XY Roller	25	19.1	42.9	-	82.6	188.2	-	44.5	36.3
L3107.0701-XYR	XY Roller	13	25.4	55.6	-	101.6	168.1	-	66.5	72.5
L3107.0702-XYR	XY Roller	25	25.4	55.6	-	101.6	209.6	-	66.5	72.5
L3107.0401-XYZLB	XYZ Ball Lo	13	19.1	42.9	130	50.8	117.3	28.4	44.5	9.1
L3107.0501-XYZB	XYZ Ball	13	19.1	42.9	188.4	82.6	148.8	0	44.5	19.0
L3107.0502-XYZB	XYZ Ball	25	19.1	42.9	227.8	82.6	188.2	0	44.5	19.0
L3107.0701-XYZB	XYZ Ball	13	25.4	55.6	220.4	101.6	168.1	8.1	66.5	27.2
L3107.0702-XYZB	XYZ Ball	25	25.4	55.6	261.9	101.6	209.6	8.1	66.5	27.2
L3107.0401-XYZLR	XYZ Roller Lo	13	19.1	42.9	130	50.8	117.3	28.4	44.5	18.1
L3107.0501-XYZR	XYZ Roller	13	19.1	42.9	188.4	82.6	148.8	0	44.5	36.3
L3107.0502-XYZR	XYZ Roller	25	19.1	42.9	227.8	82.6	188.2	0	44.5	36.3
L3107.0701-XYZR	XYZ Roller	13	25.4	55.6	220.4	101.6	168.1	8.1	66.5	72.5
L3107.0702-XYZR	XYZ Roller	25	25.4	55.6	261.9	101.6	209.6	8.1	66.5	72.5

Order No.	Load Z kg max.	Load X & Y kg max.	X moment load Nm max.	Y moment load Nm max.	Z moment load Nm max.
L3107.0401-XYB	9.0	9.1	0.96	0.96	0.96
L3107.0501-XYB	9.0	19.0	2.02	2.02	2.02



Order No.	Load Z kg max.	Load X & XY kg max.	X moment load Nm max.	Y moment load Nm max.	Z moment load Nm max.
L3107.0502-XYB	9.0	19.0	2.02	2.02	2.02
L3107.0701-XYB	9.0	27.2	4.94	4.94	4.94
L3107.0702-XYB	9.0	27.2	4.94	4.94	4.94
L3107.0401-XYR	9.0	18.1	1.92	1.92	1.92
L3107.0501-XYR	9.0	36.3	3.84	3.84	3.84
L3107.0502-XYR	9.0	36.3	3.84	3.84	3.84
L3107.0701-XYR	9.0	72.5	13.18	13.18	13.18
L3107.0702-XYR	9.0	72.5	13.18	13.18	13.18
L3107.0401-XYZLB	9.0	9.1	0.96	0.96	0.96
L3107.0501-XYZB	9.0	19.0	2.02	2.02	2.02
L3107.0502-XYZB	9.0	19.0	2.02	2.02	2.02
L3107.0701-XYZB	9.0	27.2	4.94	4.94	4.94
L3107.0702-XYZB	9.0	27.2	4.94	4.94	4.94
L3107.0401-XYZLR	9.0	18.1	1.92	1.92	1.92
L3107.0501-XYZR	9.0	36.3	3.84	3.84	3.84
L3107.0502-XYZR	9.0	36.3	3.84	3.84	3.84
L3107.0701-XYZR	9.0	72.5	13.18	13.18	13.18
L3107.0702-XYZR	9.0	72.5	13.18	13.18	13.18

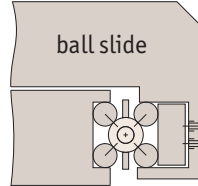




There are two different load ratings for these stages.

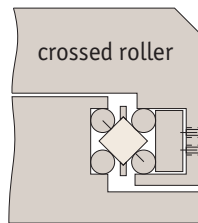
### Ball slides:

These have precision steel balls rolling in the tracks. They are the least expensive, loads up to 28Kg.



### Cross roller slides:

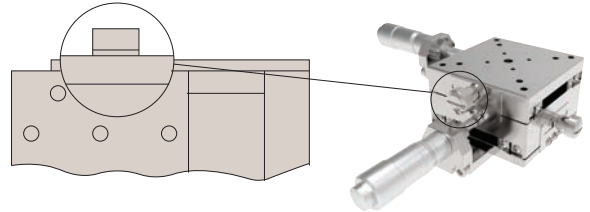
These have the same dimensions but have rollers allowing the slide to carry large loads and absorb greater moment loads up to 54Kg.



### Locking options

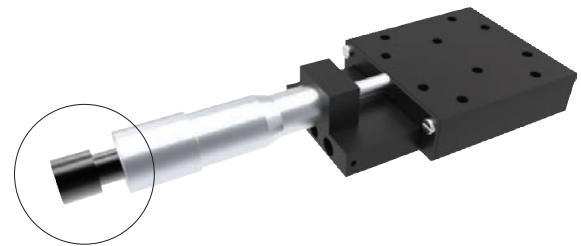
#### Posi-lock:

Allows locking of the carriage in place with a friction locking mechanism.



#### Locking micrometer:

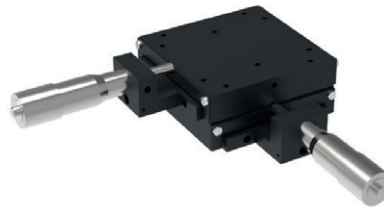
Locking of the micrometer to fix the micrometer setting.



### Front drive micrometer positioning stages



X Stage

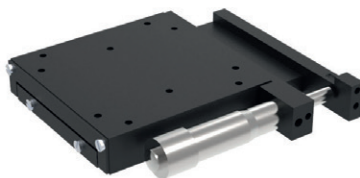


XY Stage

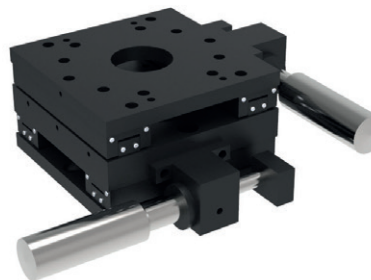


XYZ Stage

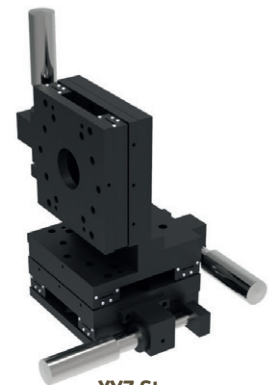
### Side drive micrometer positioning stages



X Stage



XY Stage



XYZ Stage

Also available in stainless steel.