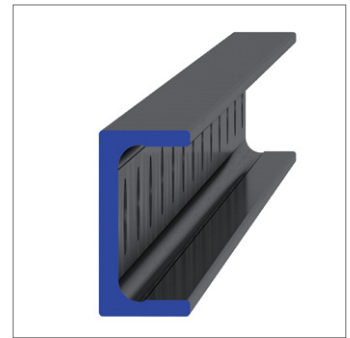
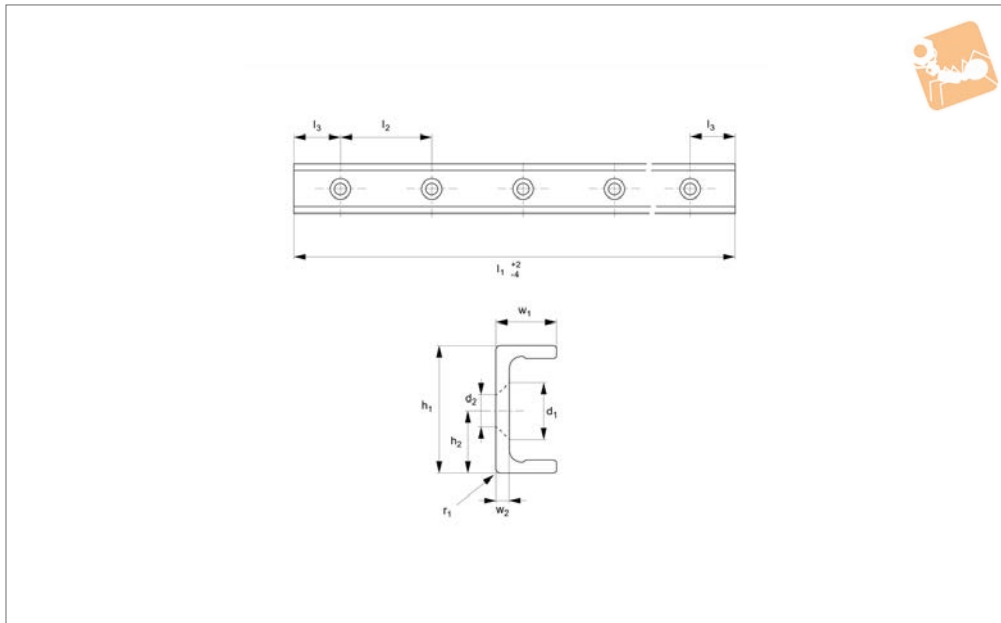




Heavy Duty U Rail

countersunk holes



L1943.ULV43

LONG LINEAR RAILS

Material

Carbon steel. Raceways induction hardened and ground.
Electrolytic zinc-plated (excluding raceways).

Technical Notes

The U rail is a slave rail and is usually used

with a T master rail.

This is the ULV countersunk rail type which is usually used with a corresponding TLV rail.

For fixing use countersunk DIN 7991 screws.

Weight: 2,6 Kg/m.

Tips

Standard carriages are the L1943.N versions (die cast aluminium alloy with wipers). Alternatively the L1943.C type is also available (without wipers).

Order No.	d ₁ for screw	h ₁	h ₂	l ₁	l ₂	l ₃	r	w ₁	w ₂
L1943.ULV43-0400	M8	43	21.5	400	80	40	1	21	4.5
L1943.ULV43-0480	M8	43	21.5	480	80	40	1	21	4.5
L1943.ULV43-0560	M8	43	21.5	560	80	40	1	21	4.5
L1943.ULV43-0640	M8	43	21.5	640	80	40	1	21	4.5
L1943.ULV43-0720	M8	43	21.5	720	80	40	1	21	4.5
L1943.ULV43-0800	M8	43	21.5	800	80	40	1	21	4.5
L1943.ULV43-0880	M8	43	21.5	880	80	40	1	21	4.5
L1943.ULV43-0960	M8	43	21.5	960	80	40	1	21	4.5
L1943.ULV43-1040	M8	43	21.5	1040	80	40	1	21	4.5
L1943.ULV43-1120	M8	43	21.5	1120	80	40	1	21	4.5
L1943.ULV43-1200	M8	43	21.5	1200	80	40	1	21	4.5
L1943.ULV43-1280	M8	43	21.5	1280	80	40	1	21	4.5
L1943.ULV43-1360	M8	43	21.5	1360	80	40	1	21	4.5
L1943.ULV43-1440	M8	43	21.5	1440	80	40	1	21	4.5
L1943.ULV43-1520	M8	43	21.5	1520	80	40	1	21	4.5
L1943.ULV43-1600	M8	43	21.5	1600	80	40	1	21	4.5
L1943.ULV43-1680	M8	43	21.5	1680	80	40	1	21	4.5
L1943.ULV43-1760	M8	43	21.5	1760	80	40	1	21	4.5
L1943.ULV43-1840	M8	43	21.5	1840	80	40	1	21	4.5
L1943.ULV43-1920	M8	43	21.5	1920	80	40	1	21	4.5
L1943.ULV43-2000	M8	43	21.5	2000	80	40	1	21	4.5
L1943.ULV43-2080	M8	43	21.5	2080	80	40	1	21	4.5
L1943.ULV43-2160	M8	43	21.5	2160	80	40	1	21	4.5
L1943.ULV43-2240	M8	43	21.5	2240	80	40	1	21	4.5
L1943.ULV43-2320	M8	43	21.5	2320	80	40	1	21	4.5
L1943.ULV43-2400	M8	43	21.5	2400	80	40	1	21	4.5
L1943.ULV43-2480	M8	43	21.5	2480	80	40	1	21	4.5
L1943.ULV43-2560	M8	43	21.5	2560	80	40	1	21	4.5
L1943.ULV43-2640	M8	43	21.5	2640	80	40	1	21	4.5
L1943.ULV43-2720	M8	43	21.5	2720	80	40	1	21	4.5
L1943.ULV43-2800	M8	43	21.5	2800	80	40	1	21	4.5



Order No.	d ₁ for screw	h ₁	h ₂	l ₁	l ₂	l ₃	r	w ₁	w ₂
L1943.ULV43-2880	M8	43	21.5	2880	80	40	1	21	4.5
L1943.ULV43-2960	M8	43	21.5	2960	80	40	1	21	4.5
L1943.ULV43-3040	M8	43	21.5	3040	80	40	1	21	4.5
L1943.ULV43-3120	M8	43	21.5	3120	80	40	1	21	4.5
L1943.ULV43-3200	M8	43	21.5	3200	80	40	1	21	4.5
L1943.ULV43-3280	M8	43	21.5	3280	80	40	1	21	4.5
L1943.ULV43-3360	M8	43	21.5	3360	80	40	1	21	4.5
L1943.ULV43-3440	M8	43	21.5	3440	80	40	1	21	4.5
L1943.ULV43-3520	M8	43	21.5	3520	80	40	1	21	4.5
L1943.ULV43-3600	M8	43	21.5	3600	80	40	1	21	4.5
L1943.ULV43-3680	M8	43	21.5	3680	80	40	1	21	4.5
L1943.ULV43-3760	M8	43	21.5	3760	80	40	1	21	4.5
L1943.ULV43-3840	M8	43	21.5	3840	80	40	1	21	4.5
L1943.ULV43-3920	M8	43	21.5	3920	80	40	1	21	4.5
L1943.ULV43-4000	M8	43	21.5	4000	80	40	1	21	4.5
L1943.ULV43-4080	M8	43	21.5	4080	80	40	1	21	4.5