

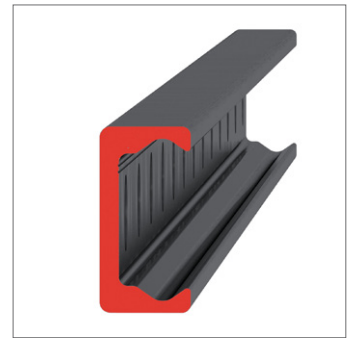
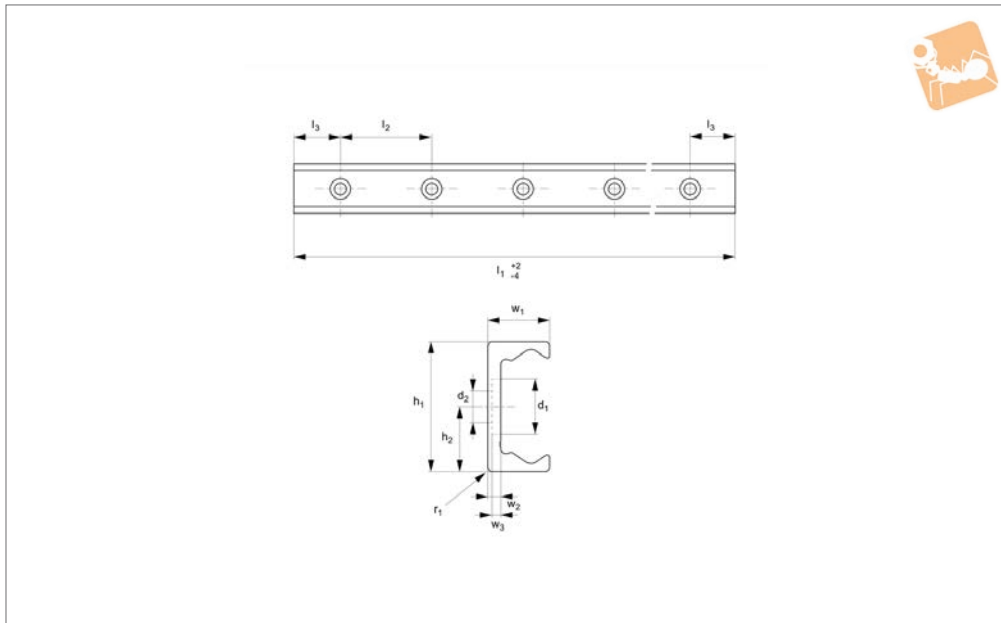


Light Duty T Rail

counterbored holes



Long Linear Rails



L1918.TLC18

LONG LINEAR RAILS

Material

Carbon steel. Raceways induction hardened and ground.
Electrolytic zinc-plated (excluding raceways).

Technical Notes

The T rail is a master rail and is usually

used with a U slave rail (allows for system misalignment).

This is the counterbored rail type (most popular), which is usually used with a corresponding ULC rail.
Special low profile Torx head screws provided free of charge.

Weight: 0,55 Kg/m.

Tips

Standard carriages are the L1918.N versions (die cast aluminium alloy with wipers). Alternatively the L1918.C type is also available (without wipers).

Order No.	d ₁	d ₂ for screws	h ₁	h ₂	l ₁	l ₂	l ₃	r	w ₁	w ₂	w ₃
L1918.TLC18-0160	9.5	M4	18	9	160	80	40	1.5	8.25	2.8	2
L1918.TLC18-0240	9.5	M4	18	9	240	80	40	1.5	8.25	2.8	2
L1918.TLC18-0320	9.5	M4	18	9	320	80	40	1.5	8.25	2.8	2
L1918.TLC18-0400	9.5	M4	18	9	400	80	40	1.5	8.25	2.8	2
L1918.TLC18-0480	9.5	M4	18	9	480	80	40	1.5	8.25	2.8	2
L1918.TLC18-0560	9.5	M4	18	9	560	80	40	1.5	8.25	2.8	2
L1918.TLC18-0640	9.5	M4	18	9	640	80	40	1.5	8.25	2.8	2
L1918.TLC18-0720	9.5	M4	18	9	720	80	40	1.5	8.25	2.8	2
L1918.TLC18-0800	9.5	M4	18	9	800	80	40	1.5	8.25	2.8	2
L1918.TLC18-0880	9.5	M4	18	9	880	80	40	1.5	8.25	2.8	2
L1918.TLC18-0960	9.5	M4	18	9	960	80	40	1.5	8.25	2.8	2
L1918.TLC18-1040	9.5	M4	18	9	1040	80	40	1.5	8.25	2.8	2
L1918.TLC18-1120	9.5	M4	18	9	1120	80	40	1.5	8.25	2.8	2
L1918.TLC18-1200	9.5	M4	18	9	1200	80	40	1.5	8.25	2.8	2
L1918.TLC18-1280	9.5	M4	18	9	1280	80	40	1.5	8.25	2.8	2
L1918.TLC18-1360	9.5	M4	18	9	1360	80	40	1.5	8.25	2.8	2
L1918.TLC18-1440	9.5	M4	18	9	1440	80	40	1.5	8.25	2.8	2
L1918.TLC18-1520	9.5	M4	18	9	1520	80	40	1.5	8.25	2.8	2
L1918.TLC18-1600	9.5	M4	18	9	1600	80	40	1.5	8.25	2.8	2
L1918.TLC18-1680	9.5	M4	18	9	1680	80	40	1.5	8.25	2.8	2
L1918.TLC18-1760	9.5	M4	18	9	1760	80	40	1.5	8.25	2.8	2
L1918.TLC18-1840	9.5	M4	18	9	1840	80	40	1.5	8.25	2.8	2
L1918.TLC18-1920	9.5	M4	18	9	1920	80	40	1.5	8.25	2.8	2
L1918.TLC18-2000	9.5	M4	18	9	2000	80	40	1.5	8.25	2.8	2