

R3242

RIGID COUPLINGS

Material

Stainless steel DIN 1,4305.

0,013mm.

Fasten component to hub with epoxy cement or stake and dutch pin.

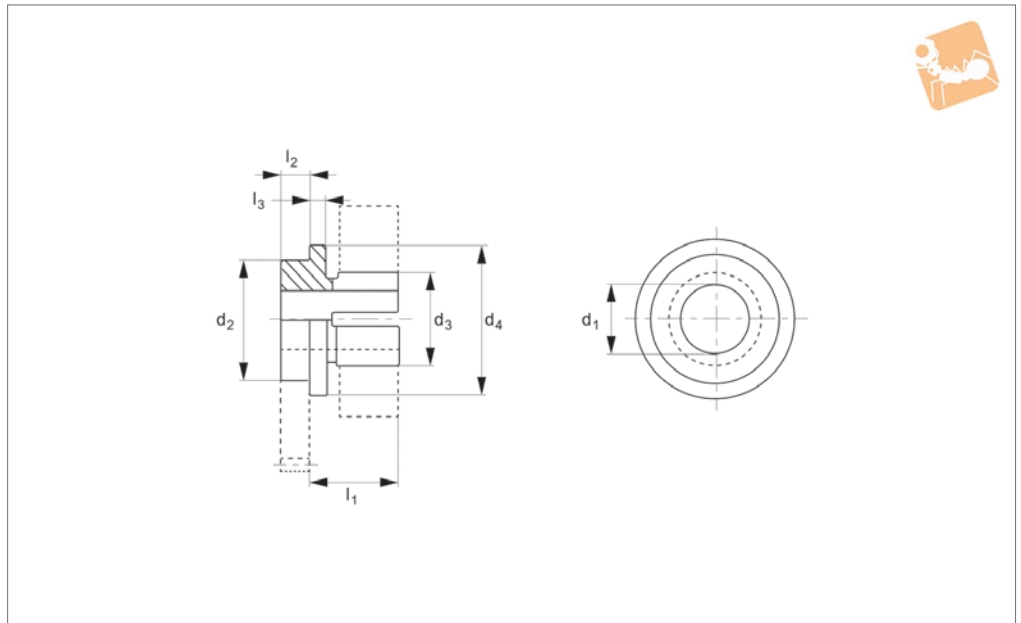
Technical Notes

Diameters A & B are concentric within

Order No.	Bore dia. B	l	Ø A	Ø H	t
R3242.041	4	6	10	13	1.6
R3242.042	4	6	10	13	3.0
R3242.043	4	6	10	13	5.0
R3242.044	4	6	10	13	6.4
R3242.045	4	6	10	13	9.5
R3242.061	6	6	10	13	1.6
R3242.062	6	6	10	13	3.0
R3242.063	6	6	10	13	5.0
R3242.064	6	6	10	13	6.4
R3242.065	6	6	10	13	9.5
R3242.071	7	6	10	13	1.6
R3242.072	7	6	10	13	3.0
R3242.073	7	6	10	13	5.0
R3242.074	7	6	10	13	6.4
R3242.075	7	6	10	13	9.5
R3242.080	8	13	10	20	1.6
R3242.081	8	13	10	20	3.0
R3242.082	8	13	10	20	5.0
R3242.083	8	13	10	20	6.4
R3242.084	8	13	10	20	9.5
R3242.101	10	13	16	20	1.6
R3242.102	10	13	16	20	4.8
R3242.103	10	13	16	20	6.4
R3242.104	10	13	16	20	9.5
R3242.105	10	13	16	20	10.0
R3242.121	12	13	16	20	1.6
R3242.122	12	13	16	20	4.8
R3242.123	12	13	16	20	6.4
R3242.124	12	13	16	20	9.5
R3242.125	12	13	16	20	10.0



R3245



Material

Stainless steel (DIN 1,4305).

Technical Notes

Concentric to bore within 0,013mm.
For clamps see part no. R3250.

Order No.	d ₁ tol. h8	d ₂ tol. S8	d ₃	d ₄	l ₁	l ₂	l ₃	Clamp no. (R3250)
R3245.041	4	10	5.6	12	4.8	1.6	0.8	R3250.041
R3245.042	4	10	5.6	12	4.8	3.0	0.8	R3250.042
R3245.043	4	10	5.6	12	4.8	5.0	0.8	R3250.043
R3245.044	4	10	5.6	12	4.8	6.4	0.8	R3250.044
R3245.045	4	10	5.6	12	4.8	9.5	0.8	R3250.045
R3245.061	6	10	7.6	13	6.2	1.6	1.2	R3250.061
R3245.062	6	10	7.6	13	6.2	3.0	1.2	R3250.062
R3245.063	6	10	7.6	13	6.2	5.0	1.2	R3250.063
R3245.064	6	10	7.6	13	6.2	6.4	1.2	R3250.064
R3245.065	6	10	7.6	13	6.2	9.5	1.2	R3250.065
R3245.071	7	10	8.6	14	6.6	1.6	1.6	R3250.071
R3245.072	7	10	8.6	14	6.6	3.0	1.6	R3250.072
R3245.073	7	10	8.6	14	6.6	5.0	1.6	R3250.073
R3245.074	7	10	8.6	14	6.6	6.4	1.6	R3250.074
R3245.075	7	10	8.6	14	6.6	9.5	1.6	R3250.075
R3245.081	8	10	9.6	16	7.6	1.6	1.6	R3250.081
R3245.082	8	10	9.6	16	7.6	3.0	1.6	R3250.082
R3245.083	8	10	9.6	16	7.6	5.0	1.6	R3250.083
R3245.084	8	10	9.6	16	7.6	6.4	1.6	R3250.084
R3245.085	8	10	9.6	16	7.6	9.5	1.6	R3250.085
R3245.101	10	16	11.6	24	7.6	1.6	1.6	R3250.101
R3245.102	10	16	11.6	24	7.6	4.8	1.6	R3250.102
R3245.103	10	16	11.6	24	7.6	6.4	1.6	R3250.103
R3245.104	10	16	11.6	24	7.6	9.5	1.6	R3250.104
R3245.105	10	16	11.6	24	7.6	10.0	1.6	R3250.105
R3245.121	12	16	13.6	30	9.6	1.6	1.6	R3250.121
R3245.122	12	16	13.6	30	9.6	4.8	1.6	R3250.122
R3245.123	12	16	13.6	30	9.6	6.4	1.6	R3250.123
R3245.124	12	16	13.6	30	9.6	9.5	1.6	R3250.124
R3245.125	12	16	13.6	30	9.6	10.0	1.6	R3250.125