

P1330

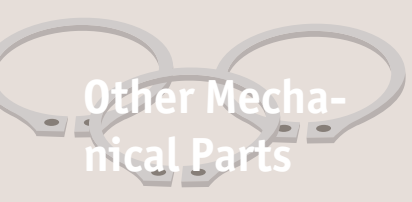
OTHER MECHANICAL PARTS

Material
Brass, nickel plated.

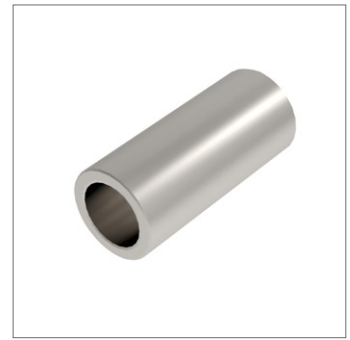
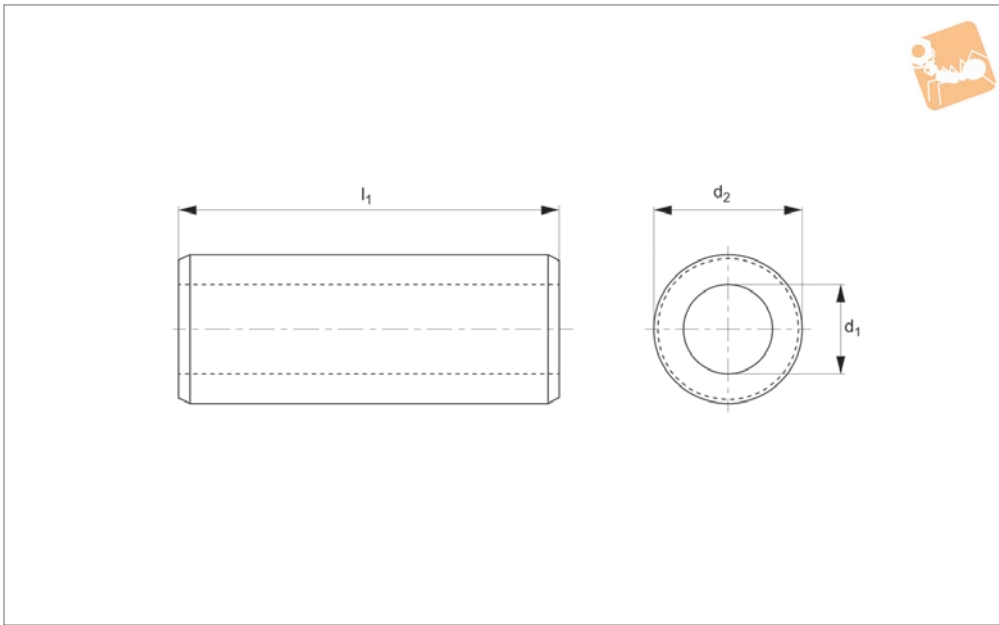
Relatively large wall thicknesses result in high compression strengths.

Technical Notes
Precision turned on outside diameter.

Order No.	d_1 nom.	d_1 max.	l_1 tol. js13	d_2 tol. h9
P1330.020-001	2	2.2	1	4
P1330.020-002	2	2.2	2	4
P1330.020-003	2	2.2	3	4
P1330.020-004	2	2.2	4	4
P1330.020-005	2	2.2	5	4
P1330.020-006	2	2.2	6	4
P1330.020-008	2	2.2	8	4
P1330.020-010	2	2.2	10	4
P1330.020-012	2	2.2	12	4
P1330.020-015	2	2.2	15	4
P1330.020-018	2	2.2	18	4
P1330.020-020	2	2.2	20	4
P1330.020-025	2	2.2	25	4
P1330.020-030	2	2.2	30	4
P1330.025-001	2.5	2.5	1	5
P1330.025-002	2.5	2.5	2	5
P1330.025-003	2.5	2.5	3	5
P1330.025-004	2.5	2.5	4	5
P1330.025-005	2.5	2.5	5	5
P1330.025-006	2.5	2.5	6	5
P1330.025-008	2.5	2.5	8	5
P1330.025-010	2.5	2.5	10	5
P1330.025-012	2.5	2.5	12	5
P1330.025-015	2.5	2.5	15	5
P1330.025-018	2.5	2.5	18	5
P1330.025-020	2.5	2.5	20	5
P1330.025-025	2.5	2.5	25	5
P1330.025-030	2.5	2.5	30	5
P1330.030-001	3	3.2	1	6
P1330.030-002	3	3.2	2	6
P1330.030-003	3	3.2	3	6
P1330.030-004	3	3.2	4	6
P1330.030-005	3	3.2	5	6
P1330.030-006	3	3.2	6	6



Order No.	d ₁ nom.	d ₁ max.	l ₁ tol. js13	d ₂ tol. h9
P1330.030-008	3	3.2	8	6
P1330.030-010	3	3.2	10	6
P1330.030-012	3	3.2	12	6
P1330.030-015	3	3.2	15	6
P1330.030-018	3	3.2	18	6
P1330.030-020	3	3.2	20	6
P1330.030-025	3	3.2	25	6
P1330.030-030	3	3.2	30	6
P1330.040-001	4	4.3	1	8
P1330.040-002	4	4.3	2	8
P1330.040-003	4	4.3	3	8
P1330.040-004	4	4.3	4	8
P1330.040-005	4	4.3	5	8
P1330.040-006	4	4.3	6	8
P1330.040-008	4	4.3	8	8
P1330.040-010	4	4.3	10	8
P1330.040-012	4	4.3	12	8
P1330.040-015	4	4.3	15	8
P1330.040-018	4	4.3	18	8
P1330.040-020	4	4.3	20	8
P1330.040-025	4	4.3	25	8
P1330.040-030	4	4.3	30	8
P1330.050-001	5	5.3	1	10
P1330.050-002	5	5.3	2	10
P1330.050-003	5	5.3	3	10
P1330.050-004	5	5.3	4	10
P1330.050-005	5	5.3	5	10
P1330.050-006	5	5.3	6	10
P1330.050-008	5	5.3	8	10
P1330.050-010	5	5.3	10	10
P1330.050-012	5	5.3	12	10
P1330.050-015	5	5.3	15	10
P1330.050-018	5	5.3	18	10
P1330.050-020	5	5.3	20	10
P1330.050-025	5	5.3	25	10
P1330.050-030	5	5.3	30	10



P1331

OTHER MECHANICAL PARTS

Material

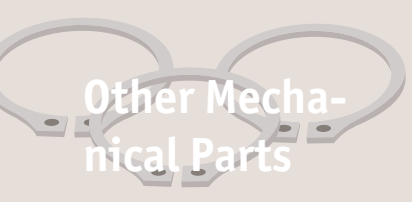
Stainless steel (AISI 303).

Relatively large wall thicknesses result in high compression strengths.

Technical Notes

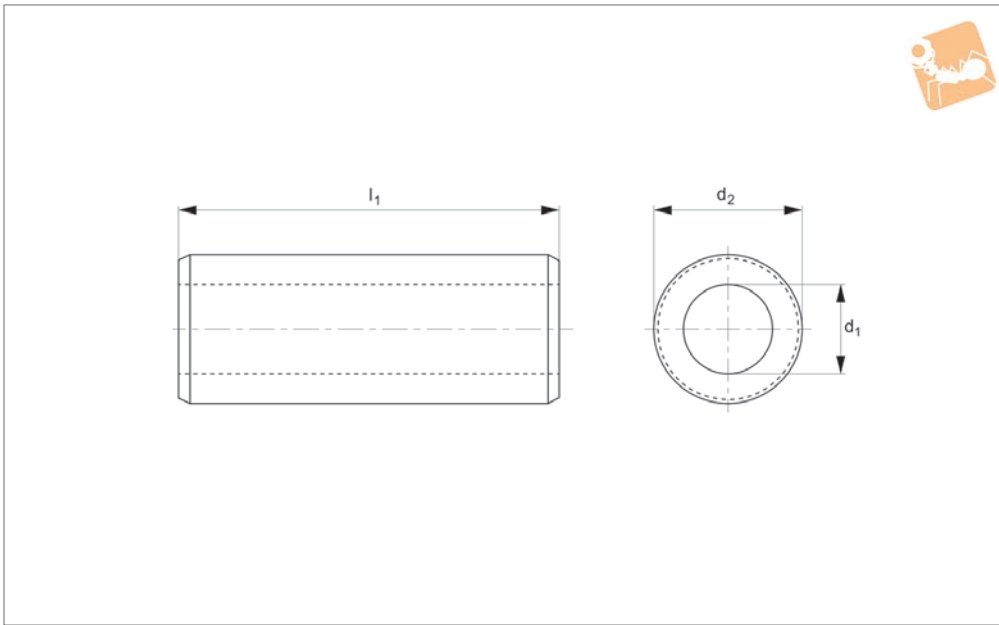
Precision turned on outside diameter.

Order No.	d ₁ nom.	d ₁ max.	l ₁ tol. js13	d ₂ tol. h9
P1331.020-001	2	2.2	1	4
P1331.020-002	2	2.2	2	4
P1331.020-003	2	2.2	3	4
P1331.020-004	2	2.2	4	4
P1331.020-005	2	2.2	5	4
P1331.020-006	2	2.2	6	4
P1331.020-008	2	2.2	8	4
P1331.020-010	2	2.2	10	4
P1331.020-012	2	2.2	12	4
P1331.020-015	2	2.2	15	4
P1331.020-018	2	2.2	18	4
P1331.020-020	2	2.2	20	4
P1331.020-025	2	2.2	25	4
P1331.020-030	2	2.2	30	4
P1331.025-001	2.5	2.5	1	5
P1331.025-002	2.5	2.5	2	5
P1331.025-003	2.5	2.5	3	5
P1331.025-004	2.5	2.5	4	5
P1331.025-005	2.5	2.5	5	5
P1331.025-006	2.5	2.5	6	5
P1331.025-008	2.5	2.5	8	5
P1331.025-010	2.5	2.5	10	5
P1331.025-012	2.5	2.5	12	5
P1331.025-015	2.5	2.5	15	5
P1331.025-018	2.5	2.5	18	5
P1331.025-020	2.5	2.5	20	5
P1331.025-025	2.5	2.5	25	5
P1331.025-030	2.5	2.5	30	5
P1331.030-001	3	3.2	1	6
P1331.030-002	3	3.2	2	6
P1331.030-003	3	3.2	3	6
P1331.030-004	3	3.2	4	6
P1331.030-005	3	3.2	5	6
P1331.030-006	3	3.2	6	6



OTHER MECHANICAL PARTS

Order No.	d ₁ nom.	d ₁ max.	l ₁ tol. js13	d ₂ tol. h9
P1331.030-008	3	3.2	8	6
P1331.030-010	3	3.2	10	6
P1331.030-012	3	3.2	12	6
P1331.030-015	3	3.2	15	6
P1331.030-018	3	3.2	18	6
P1331.030-020	3	3.2	20	6
P1331.030-025	3	3.2	25	6
P1331.030-030	3	3.2	30	6
P1331.040-001	4	4.3	1	8
P1331.040-002	4	4.3	2	8
P1331.040-003	4	4.3	3	8
P1331.040-004	4	4.3	4	8
P1331.040-005	4	4.3	5	8
P1331.040-006	4	4.3	6	8
P1331.040-008	4	4.3	8	8
P1331.040-010	4	4.3	10	8
P1331.040-012	4	4.3	12	8
P1331.040-015	4	4.3	15	8
P1331.040-018	4	4.3	18	8
P1331.040-020	4	4.3	20	8
P1331.040-025	4	4.3	25	8
P1331.040-030	4	4.3	30	8
P1331.050-001	5	5.3	1	10
P1331.050-002	5	5.3	2	10
P1331.050-003	5	5.3	3	10
P1331.050-004	5	5.3	4	10
P1331.050-005	5	5.3	5	10
P1331.050-006	5	5.3	6	10
P1331.050-008	5	5.3	8	10
P1331.050-010	5	5.3	10	10
P1331.050-012	5	5.3	12	10
P1331.050-015	5	5.3	15	10
P1331.050-018	5	5.3	18	10
P1331.050-020	5	5.3	20	10
P1331.050-025	5	5.3	25	10
P1331.050-030	5	5.3	30	10



P1332

OTHER MECHANICAL PARTS

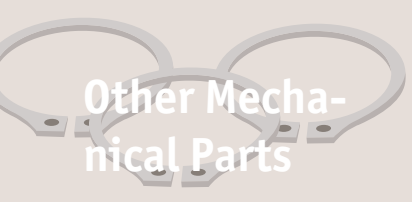
Material
Nylon, PA66

Economical means of spacing components where high compression strength is not required.

Technical Notes
Precision turned on outside diameter.

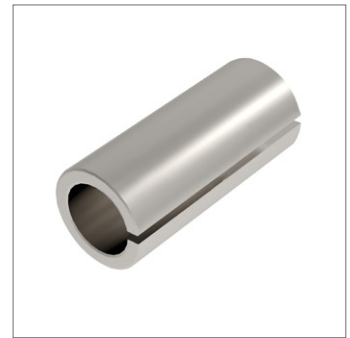
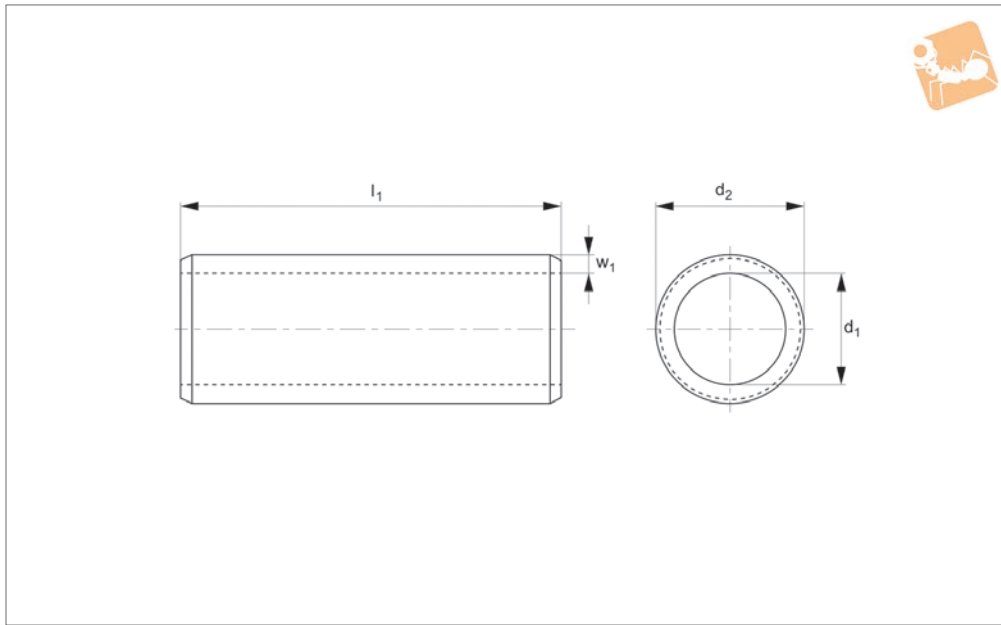
Provides corrosion resistance and electrical insulation.

Order No.	d ₁ nom.	d ₁ max.	l ₁ tol. js13	d ₂ tol. h9
P1332.030-001	3	3.2	1	6
P1332.030-002	3	3.2	2	6
P1332.030-003	3	3.2	3	6
P1332.030-004	3	3.2	4	6
P1332.030-005	3	3.2	5	6
P1332.030-006	3	3.2	6	6
P1332.030-008	3	3.2	8	6
P1332.030-010	3	3.2	10	6
P1332.030-012	3	3.2	12	6
P1332.030-015	3	3.2	15	6
P1332.030-018	3	3.2	18	6
P1332.030-020	3	3.2	20	6
P1332.030-025	3	3.2	25	6
P1332.030-030	3	3.2	30	6
P1332.040-001	4	4.3	1	8
P1332.040-002	4	4.3	2	8
P1332.040-003	4	4.3	3	8
P1332.040-004	4	4.3	4	8
P1332.040-005	4	4.3	5	8
P1332.040-006	4	4.3	6	8
P1332.040-008	4	4.3	8	8
P1332.040-010	4	4.3	10	8
P1332.040-012	4	4.3	12	8
P1332.040-016	4	4.3	16	8
P1332.040-018	4	4.3	18	8
P1332.040-020	4	4.3	20	8
P1332.040-025	4	4.3	25	8
P1332.040-030	4	4.3	30	8
P1332.050-001	5	5.3	1	10
P1332.050-002	5	5.3	2	10
P1332.050-003	5	5.3	3	10
P1332.050-004	5	5.3	4	10
P1332.050-005	5	5.3	5	10
P1332.050-006	5	5.3	6	10



OTHER MECHANICAL PARTS

Order No.	d ₁ nom.	d ₁ max.	l ₁ tol. js13	d ₂ tol. h9
P1332.050-008	5	5.3	8	10
P1332.050-010	5	5.3	10	10
P1332.050-012	5	5.3	12	10
P1332.050-015	5	5.3	15	10
P1332.050-018	5	5.3	18	10
P1332.050-020	5	5.3	20	10
P1332.050-025	5	5.3	25	10
P1332.050-030	5	5.3	30	10
P1332.060-001	6	6.4	1	10
P1332.060-002	6	6.4	2	10
P1332.060-003	6	6.4	3	10
P1332.060-004	6	6.4	4	10
P1332.060-005	6	6.4	5	10
P1332.060-006	6	6.4	6	10
P1332.060-008	6	6.4	8	10
P1332.060-010	6	6.4	10	10
P1332.060-012	6	6.4	12	10
P1332.060-015	6	6.4	15	10
P1332.060-018	6	6.4	18	10
P1332.060-020	6	6.4	20	10
P1332.060-025	6	6.4	25	10
P1332.060-030	6	6.4	30	10
P1332.080-001	8	8.2	1	12
P1332.080-002	8	8.2	2	12
P1332.080-003	8	8.2	3	12
P1332.080-004	8	8.2	4	12
P1332.080-005	8	8.2	5	12
P1332.080-006	8	8.2	6	12
P1332.080-008	8	8.2	8	12
P1332.080-010	8	8.2	10	12
P1332.080-012	8	8.2	12	12
P1332.080-015	8	8.2	15	12
P1332.080-018	8	8.2	18	12
P1332.080-020	8	8.2	20	12
P1332.080-025	8	8.2	25	12
P1332.080-030	8	8.2	30	12



P1335

OTHER MECHANICAL PARTS

Material

Mild steel (AISI 1010, CS4), zinc plated.

ring process makes them very cost-effective.

Technical Notes

These are rolled spacers - the manufactu-

Order No.	d ₁ nom.	d ₁ min.	d ₁ max.	l ₁ ±0.15	d ₂	w ₁
P1335.030-004	3	3.15	3.3	4	4.4	0.5
P1335.030-006	3	3.15	3.3	6	4.4	0.5
P1335.030-008	3	3.15	3.3	8	4.4	0.5
P1335.030-010	3	3.15	3.3	10	4.4	0.5
P1335.030-012	3	3.15	3.3	12	4.4	0.5
P1335.030-014	3	3.15	3.3	14	4.4	0.5
P1335.030-016	3	3.15	3.3	16	4.4	0.5
P1335.030-018	3	3.15	3.3	18	4.4	0.5
P1335.030-020	3	3.15	3.3	20	4.4	0.5
P1335.040-004	4	4.15	4.3	4	5.8	0.7
P1335.040-006	4	4.15	4.3	6	5.8	0.7
P1335.040-008	4	4.15	4.3	8	5.8	0.7
P1335.040-010	4	4.15	4.3	10	5.8	0.7
P1335.040-012	4	4.15	4.3	12	5.8	0.7
P1335.040-014	4	4.15	4.3	14	5.8	0.7
P1335.040-016	4	4.15	4.3	16	5.8	0.7
P1335.040-018	4	4.15	4.3	18	5.8	0.7
P1335.040-020	4	4.15	4.3	20	5.8	0.7
P1335.040-022	4	4.15	4.3	22	5.8	0.7
P1335.040-024	4	4.15	4.3	24	5.8	0.7
P1335.040-026	4	4.15	4.3	26	5.8	0.7
P1335.040-028	4	4.15	4.3	28	5.8	0.7
P1335.040-030	4	4.15	4.3	30	5.8	0.7
P1335.050-006	5	5.2	5.4	6	6.9	0.7
P1335.050-008	5	5.2	5.4	8	6.9	0.7
P1335.050-010	5	5.2	5.4	10	6.9	0.7
P1335.050-012	5	5.2	5.4	12	6.9	0.7
P1335.050-014	5	5.2	5.4	14	6.9	0.7
P1335.050-016	5	5.2	5.4	16	6.9	0.7
P1335.050-018	5	5.2	5.4	18	6.9	0.7
P1335.050-020	5	5.2	5.4	20	6.9	0.7
P1335.050-022	5	5.2	5.4	22	6.9	0.7
P1335.050-024	5	5.2	5.4	24	6.9	0.7
P1335.050-026	5	5.2	5.4	26	6.9	0.7



Order No.	d ₁ nom.	d ₁ min.	d ₁ max.	l ₁ ±0.15	d ₂	w ₁
P1335.050-028	5	5.2	5.4	28	6.9	0.7
P1335.050-030	5	5.2	5.4	30	6.9	0.7
P1335.050-035	5	5.2	5.4	35	6.9	0.7
P1335.060-006	6	6.2	6.4	6	8.2	0.9
P1335.060-008	6	6.2	6.4	8	8.2	0.9
P1335.060-010	6	6.2	6.4	10	8.2	0.9
P1335.060-012	6	6.2	6.4	12	8.2	0.9
P1335.060-014	6	6.2	6.4	14	8.2	0.9
P1335.060-016	6	6.2	6.4	16	8.2	0.9
P1335.060-018	6	6.2	6.4	18	8.2	0.9
P1335.060-020	6	6.2	6.4	20	8.2	0.9
P1335.060-022	6	6.2	6.4	22	8.2	0.9
P1335.060-024	6	6.2	6.4	24	8.2	0.9
P1335.060-026	6	6.2	6.4	26	8.2	0.9
P1335.060-028	6	6.2	6.4	28	8.2	0.9
P1335.060-030	6	6.2	6.4	30	8.2	0.9
P1335.060-035	6	6.2	6.4	35	8.2	0.9
P1335.060-040	6	6.2	6.4	40	8.2	0.9
P1335.080-006	8	8.2	8.5	6	10.7	1.1
P1335.080-008	8	8.2	8.5	8	10.7	1.1
P1335.080-010	8	8.2	8.5	10	10.7	1.1
P1335.080-012	8	8.2	8.5	12	10.7	1.1
P1335.080-014	8	8.2	8.5	14	10.7	1.1
P1335.080-016	8	8.2	8.5	16	10.7	1.1
P1335.080-018	8	8.2	8.5	18	10.7	1.1
P1335.080-020	8	8.2	8.5	20	10.7	1.1
P1335.080-022	8	8.2	8.5	22	10.7	1.1
P1335.080-024	8	8.2	8.5	24	10.7	1.1
P1335.080-026	8	8.2	8.5	26	10.7	1.1
P1335.080-028	8	8.2	8.5	28	10.7	1.1
P1335.080-030	8	8.2	8.5	30	10.7	1.1
P1335.080-035	8	8.2	8.5	35	10.7	1.1
P1335.080-040	8	8.2	8.5	40	10.7	1.1
P1335.080-045	8	8.2	8.5	45	10.7	1.1
P1335.080-050	8	8.2	8.5	50	10.7	1.1
P1335.100-006	10	10.2	10.5	6	13.0	1.2
P1335.100-008	10	10.2	10.5	8	13.0	1.2
P1335.100-010	10	10.2	10.5	10	13.0	1.2
P1335.100-012	10	10.2	10.5	12	13.0	1.2
P1335.100-014	10	10.2	10.5	14	13.0	1.2
P1335.100-016	10	10.2	10.5	16	13.0	1.2
P1335.100-018	10	10.2	10.5	18	13.0	1.2
P1335.100-020	10	10.2	10.5	20	13.0	1.2
P1335.100-022	10	10.2	10.5	22	13.0	1.2
P1335.100-024	10	10.2	10.5	24	13.0	1.2
P1335.100-026	10	10.2	10.5	26	13.0	1.2
P1335.100-028	10	10.2	10.5	28	13.0	1.2
P1335.100-030	10	10.2	10.5	30	13.0	1.2
P1335.100-035	10	10.2	10.5	35	13.0	1.2
P1335.100-040	10	10.2	10.5	40	13.0	1.2
P1335.100-045	10	10.2	10.5	45	13.0	1.2
P1335.100-050	10	10.2	10.5	50	13.0	1.2
P1335.100-055	10	10.2	10.5	55	13.0	1.2
P1335.100-060	10	10.2	10.5	60	13.0	1.2
P1335.120-012	12	12.25	12.7	12	15.9	1.6
P1335.120-014	12	12.25	12.7	14	15.9	1.6
P1335.120-016	12	12.25	12.7	16	15.9	1.6
P1335.120-018	12	12.25	12.7	18	15.9	1.6
P1335.120-020	12	12.25	12.7	20	15.9	1.6
P1335.120-022	12	12.25	12.7	22	15.9	1.6
P1335.120-024	12	12.25	12.7	24	15.9	1.6
P1335.120-026	12	12.25	12.7	26	15.9	1.6
P1335.120-028	12	12.25	12.7	28	15.9	1.6
P1335.120-030	12	12.25	12.7	30	15.9	1.6
P1335.120-035	12	12.25	12.7	35	15.9	1.6
P1335.120-040	12	12.25	12.7	40	15.9	1.6
P1335.120-045	12	12.25	12.7	45	15.9	1.6
P1335.120-050	12	12.25	12.7	50	15.9	1.6



Clearance Spacers - Steel

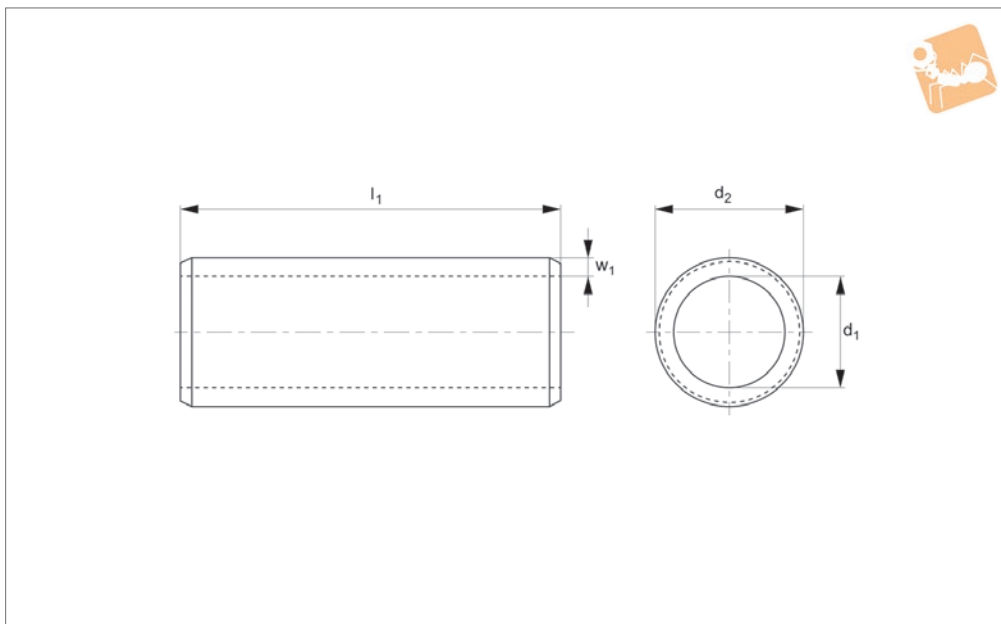


Other Mechanical Parts

Order No.	d ₁ nom.	d ₁ min.	d ₁ max.	l ₁ ±0.15	d ₂	w ₁
P1335.120-055	12	12.25	12.7	55	15.9	1.6
P1335.120-060	12	12.25	12.7	60	15.9	1.6



P1336



Material

Mild steel (AISI 1010, CS4), zinc plated.

ring process makes them very cost effective.

Technical Notes

These are rolled spacers - the manufactu-

Order No.	d ₁ nom.	d ₁ min.	d ₁ max.	l ₁ ±0.15	d ₂	w ₁
P1336.030-004	3	3.1	3.3	4	4.8	0.7
P1336.030-006	3	3.1	3.3	6	4.8	0.7
P1336.030-008	3	3.1	3.3	8	4.8	0.7
P1336.030-010	3	3.1	3.3	10	4.8	0.7
P1336.030-012	3	3.1	3.3	12	4.8	0.7
P1336.030-014	3	3.1	3.3	14	4.8	0.7
P1336.030-016	3	3.1	3.3	16	4.8	0.7
P1336.030-018	3	3.1	3.3	18	4.8	0.7
P1336.030-020	3	3.1	3.3	20	4.8	0.7
P1336.040-004	4	4.1	4.35	4	6.4	1.0
P1336.040-006	4	4.1	4.35	6	6.4	1.0
P1336.040-008	4	4.1	4.35	8	6.4	1.0
P1336.040-010	4	4.1	4.35	10	6.4	1.0
P1336.040-012	4	4.1	4.35	12	6.4	1.0
P1336.040-014	4	4.1	4.35	14	6.4	1.0
P1336.040-016	4	4.1	4.35	16	6.4	1.0
P1336.040-018	4	4.1	4.35	18	6.4	1.0
P1336.040-020	4	4.1	4.35	20	6.4	1.0
P1336.040-022	4	4.1	4.35	22	6.4	1.0
P1336.040-024	4	4.1	4.35	24	6.4	1.0
P1336.040-026	4	4.1	4.35	26	6.4	1.0
P1336.040-028	4	4.1	4.35	28	6.4	1.0
P1336.040-030	4	4.1	4.35	30	6.4	1.0
P1336.050-006	5	5.1	5.4	6	7.8	1.2
P1336.050-008	5	5.1	5.4	8	7.8	1.2
P1336.050-010	5	5.1	5.4	10	7.8	1.2
P1336.050-012	5	5.1	5.4	12	7.8	1.2
P1336.050-014	5	5.1	5.4	14	7.8	1.2
P1336.050-016	5	5.1	5.4	16	7.8	1.2
P1336.050-018	5	5.1	5.4	18	7.8	1.2
P1336.050-020	5	5.1	5.4	20	7.8	1.2
P1336.050-022	5	5.1	5.4	22	7.8	1.2
P1336.050-024	5	5.1	5.4	24	7.8	1.2
P1336.050-026	5	5.1	5.4	26	7.8	1.2



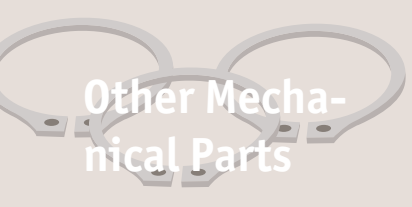
Steel Clearance Spacers



Other Mechanical Parts

Order No.	d ₁ nom.	d ₁ min.	d ₁ max.	l ₁ ±0.15	d ₂	w ₁
P1336.050-028	5	5.1	5.4	28	7.8	1.2
P1336.050-030	5	5.1	5.4	30	7.8	1.2
P1336.050-035	5	5.1	5.4	35	7.8	1.2
P1336.060-006	6	6.1	6.4	6	9.4	1.5
P1336.060-008	6	6.1	6.4	8	9.4	1.5
P1336.060-010	6	6.1	6.4	10	9.4	1.5
P1336.060-012	6	6.1	6.4	12	9.4	1.5
P1336.060-014	6	6.1	6.4	14	9.4	1.5
P1336.060-016	6	6.1	6.4	16	9.4	1.5
P1336.060-018	6	6.1	6.4	18	9.4	1.5
P1336.060-020	6	6.1	6.4	20	9.4	1.5
P1336.060-022	6	6.1	6.4	22	9.4	1.5
P1336.060-024	6	6.1	6.4	24	9.4	1.5
P1336.060-026	6	6.1	6.4	26	9.4	1.5
P1336.060-028	6	6.1	6.4	28	9.4	1.5
P1336.060-030	6	6.1	6.4	30	9.4	1.5
P1336.060-035	6	6.1	6.4	35	9.4	1.5
P1336.060-040	6	6.1	6.4	40	9.4	1.5
P1336.080-006	8	8.1	8.6	6	11.9	1.7
P1336.080-008	8	8.1	8.6	8	11.9	1.7
P1336.080-010	8	8.1	8.6	10	11.9	1.7
P1336.080-012	8	8.1	8.6	12	11.9	1.7
P1336.080-014	8	8.1	8.6	14	11.9	1.7
P1336.080-016	8	8.1	8.6	16	11.9	1.7
P1336.080-018	8	8.1	8.6	18	11.9	1.7
P1336.080-020	8	8.1	8.6	20	11.9	1.7
P1336.080-022	8	8.1	8.6	22	11.9	1.7
P1336.080-024	8	8.1	8.6	24	11.9	1.7
P1336.080-026	8	8.1	8.6	26	11.9	1.7
P1336.080-028	8	8.1	8.6	28	11.9	1.7
P1336.080-030	8	8.1	8.6	30	11.9	1.7
P1336.080-035	8	8.1	8.6	35	11.9	1.7
P1336.080-040	8	8.1	8.6	40	11.9	1.7
P1336.080-045	8	8.1	8.6	45	11.9	1.7
P1336.080-050	8	8.1	8.6	50	11.9	1.7
P1336.100-008	10	10.1	10.6	8	14.6	2.0
P1336.100-010	10	10.1	10.6	10	14.6	2.0
P1336.100-012	10	10.1	10.6	12	14.6	2.0
P1336.100-014	10	10.1	10.6	14	14.6	2.0
P1336.100-016	10	10.1	10.6	16	14.6	2.0
P1336.100-018	10	10.1	10.6	18	14.6	2.0
P1336.100-020	10	10.1	10.6	20	14.6	2.0
P1336.100-022	10	10.1	10.6	22	14.6	2.0
P1336.100-024	10	10.1	10.6	24	14.6	2.0
P1336.100-026	10	10.1	10.6	26	14.6	2.0
P1336.100-028	10	10.1	10.6	28	14.6	2.0
P1336.100-030	10	10.1	10.6	30	14.6	2.0
P1336.100-035	10	10.1	10.6	35	14.6	2.0
P1336.100-040	10	10.1	10.6	40	14.6	2.0
P1336.100-045	10	10.1	10.6	45	14.6	2.0
P1336.100-050	10	10.1	10.6	50	14.6	2.0
P1336.100-055	10	10.1	10.6	55	14.6	2.0
P1336.100-060	10	10.1	10.6	60	14.6	2.0
P1336.120-012	12	12.15	13.0	12	17.2	2.2
P1336.120-014	12	12.15	13.0	14	17.2	2.2
P1336.120-016	12	12.15	13.0	16	17.2	2.2
P1336.120-018	12	12.15	13.0	18	17.2	2.2
P1336.120-020	12	12.15	13.0	20	17.2	2.2
P1336.120-022	12	12.15	13.0	22	17.2	2.2
P1336.120-024	12	12.15	13.0	24	17.2	2.2
P1336.120-026	12	12.15	13.0	26	17.2	2.2
P1336.120-028	12	12.15	13.0	28	17.2	2.2
P1336.120-030	12	12.15	13.0	30	17.2	2.2
P1336.120-035	12	12.15	13.0	35	17.2	2.2
P1336.120-040	12	12.15	13.0	40	17.2	2.2
P1336.120-045	12	12.15	13.0	45	17.2	2.2
P1336.120-050	12	12.15	13.0	50	17.2	2.2
P1336.120-055	12	12.15	13.0	55	17.2	2.2

OTHER MECHANICAL PARTS



Order No.	d ₁ nom.	d ₁ min.	d ₁ max.	l ₁ ±0.15	d ₂	w ₁
P1336.120-060	12	12.15	13.0	60	17.2	2.2
P1336.120-065	12	12.15	13.0	65	17.2	2.2
P1336.120-070	12	12.15	13.0	70	17.2	2.2