



# Technical Information

## Installation Methods for Machine Mounts



Mounts

LEVELLING FEET

### Mounts from Automotion Components

#### Recommendations for Machine Mounts

The machine mounts should be installed between two parallel and perfectly flat surfaces. Mounts operating tilted or twisted do not work properly. This may be due to incorrect alignment, tolerances in the building of the structure or over-tightened torque during the installation of the anti-vibration mounts.



Incorrect ✕



Correct ✓



Incorrect ✕



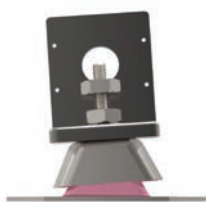
Correct ✓



Incorrect ✕



Correct ✓



Incorrect ✕



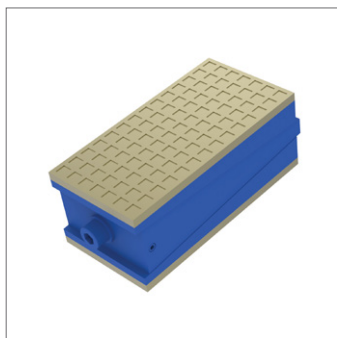
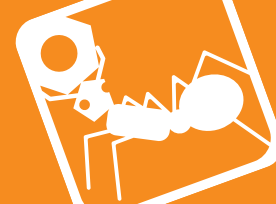
Correct ✓



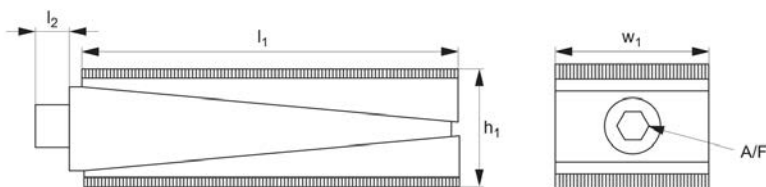
Incorrect ✕



Correct ✓



## P2170



### Material

Cast body, coated, with rubber base (65 Shore A) or harder polyurethane base (90 Shore A).

### Technical Notes

For leveling and vibration dampening of

heavy loads. Adjustment by means of allen key on side.

Adjustment is  $\pm 5\text{mm}$  or  $\pm 10\text{mm}$  depending on version selected - see table.

### Tips

The rubber base versions have lower load carrying capacity but are less expensive than the polyurethane versions. Studded version available on the website.

Order No.	$h_1$	$l_1$	$w_1$	$l_2$	A/F	Base material	Load range kgf
P2170.R150	$60 \pm 5$	150	75	12	12	Rubber	500 - 1000
P2170.P150	$60 \pm 5$	150	75	12	12	Polyurethane	700 - 2500
P2170.R220	$70 \pm 10$	200	100	12	12	Rubber	1500 - 3000
P2170.P220	$70 \pm 10$	200	100	12	12	Polyurethane	3000 - 6000



# Technical Information

## Frequency and Deflection Graph



Mounts

### Description

Automotion anti-vibration mounts work the rubber in shear and compression. Their tall height section produce large deflections, low natural frequencies, and excellent vibration isolation results. This range of mounts is suitable for applications where high vibration isolation in the 85-95% range is a priority.

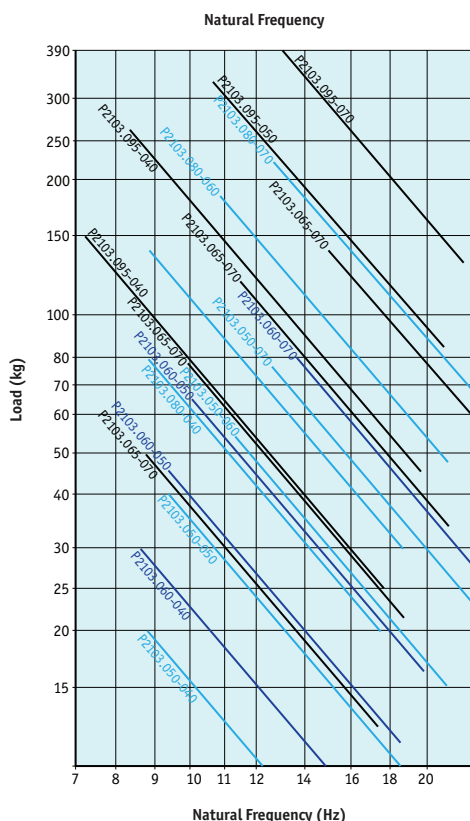
### Technical characteristics

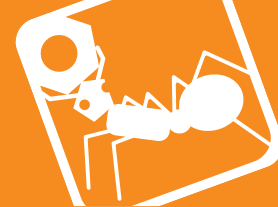
- The top metal hood protects the rubber from the Ozone, UV rays, Diesel or oils which damage the rubber.
- The metal parts have a suitable anticorrosive treatment for outdoor applications. RoHs compliant.
- They have an interlocking metal component that provides a fail-safe protection for mobile applications. This device limits the ascending vertical movement when the mounting is submitted to shocks at traction.
- The mounts are clearly identified, as the baseplates are engraved with the type and hardness, which makes it possible to easily recognise the part even after several years of use.
- The hood has a cross stamped on the top, which enhances its rigidity on mobile applications and also improves the evacuation of oils or liquids that precipitate onto it.

### Applications

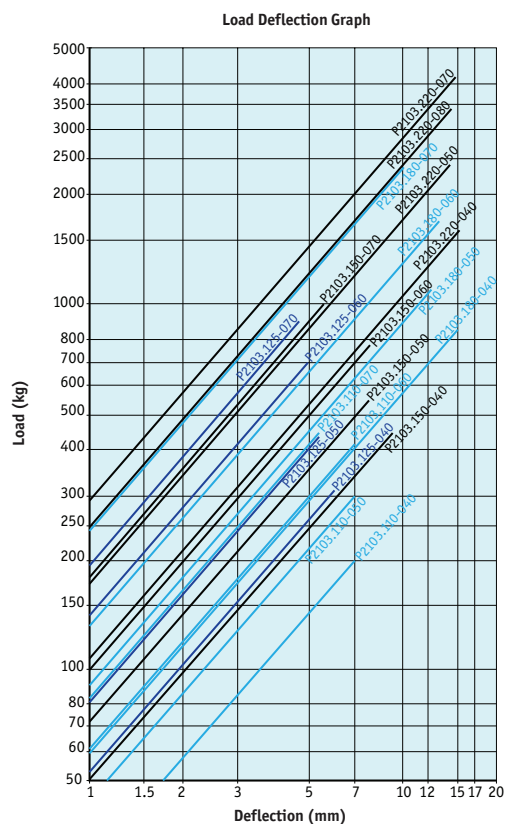
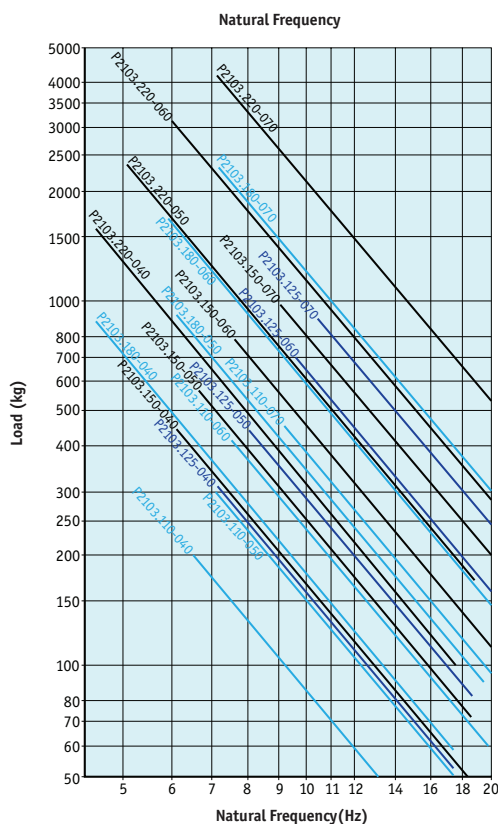
This mount is suitable for the isolation of mobile rotating machines which are exposed to axial and radial shocks, dripping oil, diesel or exposure to the weather. It is particularly interesting for applications where a high level of vibration isolation is required.

### P2103.050 - P2103.096





## P2103.110 - P2103.220



Mounts from Automation Components