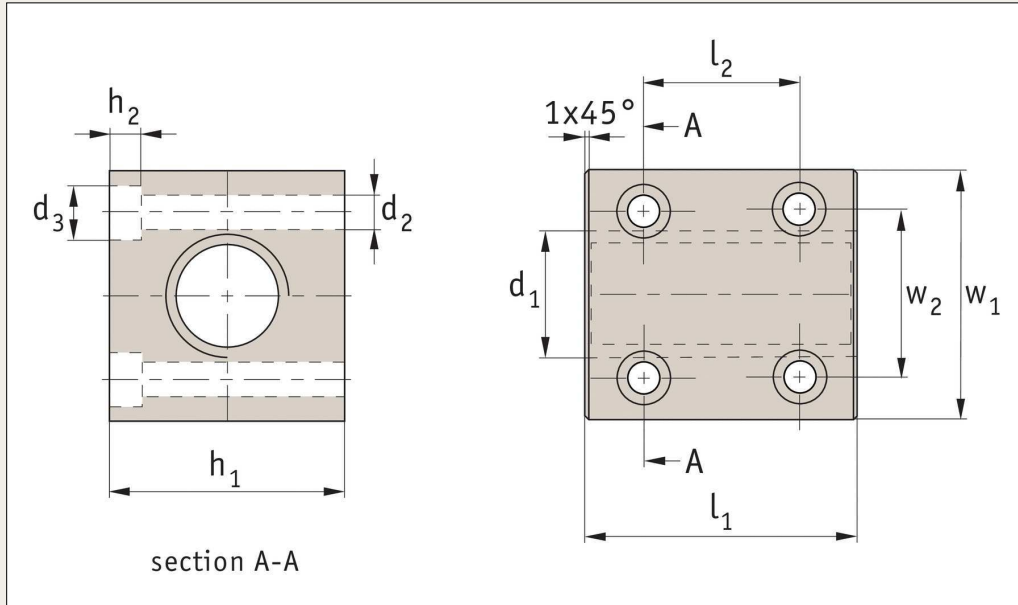


# Square Bronze Nut with Through Holes

for lead screws

Lead Screws & Nuts



## L1334

**Material**  
Bronze (CuSn7ZnPb).

Suitable for movements with medium duty loads.

For use with steel or stainless steel lead screws, L1320, L1321, L1322, and L1323.

**Technical notes**

**Tips**  
Standard nuts are right hand thread, single starts.

\*Special M8 fixing screw with a reduced head diameter.

Order No.	Size	d <sub>1</sub> 7H	Lead	Thread direction	No. of starts	l <sub>1</sub> +0.0,-0.2	h <sub>1</sub> & w <sub>1</sub> h9	l <sub>2</sub>	w <sub>2</sub>	h <sub>2</sub>	d <sub>2</sub>	For screw	d <sub>3</sub>	Contact surface mm <sup>2</sup>	△ <sub>△</sub> Kg
<b>L1334.R16-04</b>	TR16x4	16	4	Right	1	40	35	26	24	5,2	5	M 5	9,5	770	0,34
<b>L1334.R20-04</b>	TR20x4	20	4	Right	1	50	40	38	28	6,5	6	M 6	10,0	1412	0,57
<b>L1334.R30-06</b>	TR30x6	30	6	Right	1	60	50	49	38	6,5	6	M 6	10,0	2544	0,98
<b>L1334.R40-07</b>	TR40x7	40	7	Right	1	75	60	55	49	8,5	8*	M 8*	9,9*	4013	1,60
<b>L1334.L16-04</b>	TR16x4	16	4	Left	1	40	35	26	24	5,2	5	M 5	9,5	770	0,34
<b>L1334.L20-04</b>	TR20x4	20	4	Left	1	50	40	38	28	6,5	6	M 6	10,0	1412	0,57
<b>L1334.L30-06</b>	TR30x6	30	6	Left	1	60	50	49	38	6,5	6	M 6	10,0	2544	0,98
<b>L1334.L40-07</b>	TR40x7	40	7	Left	1	75	60	55	49	8,5	8*	M 8*	9,9*	4013	1,60