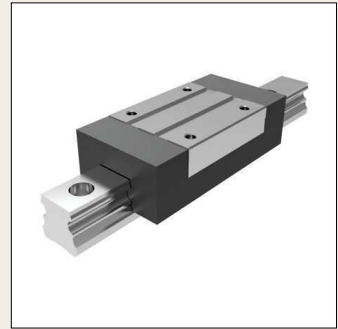
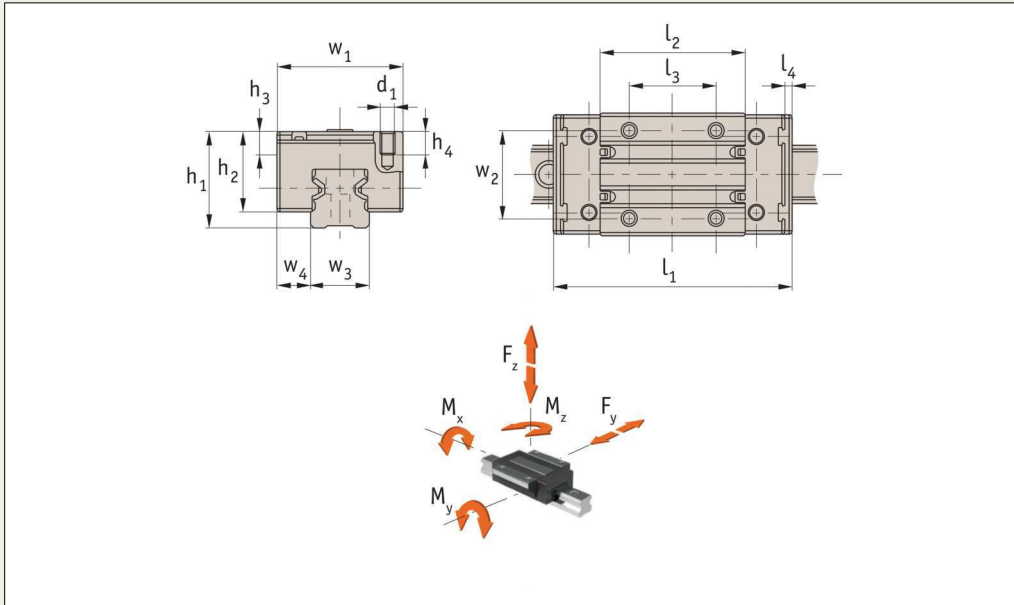


Unflanged Aluminium Carriages

with retained ball cage



L1018.U

Material

Aluminium block (X46Cr13 hardened to F35), tensile strength 350N/mm². Stainless steel inserts hardened, and stainless ball bearings (DIN 1.4034).

Technical notes

Compact, light-weight design. 60% saving versus steel versions. Select the size and number of carriages to suit the required load

then select the required rail length, (see rail part nos. L1018). Standard carriages are not preloaded. Mounting dimensions are identical to those of most steel linear guide rails, making them interchangeable.

Tips

These are aluminium rail carriages and can only be used with corresponding aluminium

linear rails L1018. For standard steel linear guideways and carriages see part no. L1016.

Important notes

Static loads ratings are difficult to calculate clearly due to the combination of materials. Do not exceed F_{max} or maximum static moment load rating. See load calculations on technical pages.

Order No.	Rail size	w ₁	h ₁ ±0.03	w ₃	w ₄ ±0.05	l ₁	l ₂	w ₂	l ₃	d ₁	h ₂	h ₃	h ₄	ε±δ Kg
L1018.U15	15	34	24	15	9,5	64,0	37,8	26	26	M4	19,8	4,1	6,0	0,07
L1018.U20	20	44	30	20	12,0	85,9	51,5	32	36	M5	24,7	5,5	7,5	0,15
L1018.U25	25	48	36	23	12,5	96,0	58,0	35	35	M6	29,9	6,4	9,0	0,22

Order No.	l ₄	Dynamic load C N	F max. N	M _x dyn Nm	M _x max static Nm	M _y +M _z dyn Nm	M _y +M _z max static Nm
L1018.U15	2,5	5,000	2,000	36	14	29	12
L1018.U20	2,8	11,000	4,400	101	40	89	35
L1018.U25	3,0	16,000	6,400	165	66	147	59