



**Wixroyd**  
group  
AN ESSENTRA COMPANY

# Precision That Powers Your Systems



**SCAN ME**  
to find  
out more



# Wixroyd Group

## Nuclear, Energy & HVAC Systems

The Wixroyd Group - comprising of our three specialist brands, Wixroyd, Automotion Components, and Teknipart - supplies precision components for the nuclear, energy, and HVAC sectors.

Our components are used in the design and manufacture of critical equipment and infrastructure, including power generation systems, air-handling units, electrical enclosures, and outdoor plant installations. They are specified wherever reliability, strength, and long-term performance are essential.

Engineers rely on our components where structural integrity, vibration resistance, secure access, and precise alignment are critical to safe and efficient operation. Our products are designed to perform in demanding industrial environments, both indoors and outdoors.

With a broad product range and strong engineering support, the Wixroyd Group helps engineers simplify assembly, improve durability, and maintain consistent performance across complex systems.

We also provide detailed CAD resources and the flexibility to deliver bespoke or application-specific components when required.



### What we offer ▼



**High-load capacity components**



**Outdoor & corrosion resistant materials**



**Vibration resistant fastening**



**Mechanical locking & positioning systems**



**CAD files for easy design integration**



**Bespoke & custom manufacturing capability**

# In this catalogue

Access & Enclosure Hardware .....	3-4
Locking, Indexing & Control .....	5-6
Vibration, Mounting & Structural Support .....	7-8
Linear Motion & Power Transmission .....	9-10
Fasteners, Spacers & Retention .....	11-12
Clamping & Workholding .....	13-14
Other Components .....	15-16
Application Selection Chart .....	17-18
In-House Capabilities .....	19-20



**78920**

Pull Handles  
- Oval Type



**78900**

Pull Handles  
- Bar Type



**E2200**

Touch Latches



**B1086**

Swing Handles  
- Cam Control



**78070**

Pull Handles  
- Offset



**J0300**

Draw Latches  
- Spring Loaded



**S2205**

End Mount  
Concealed  
Pivot Hinge



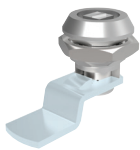
**S1170**

Surface Mount  
In-Line Hinges



**S2155**

Concealed Pivot  
Hinges - Lift Off



**A1261**

Mini Cam  
Latches



**S0780**

Surface Mount  
- Leaf Hinge



**J0170**

Mini Draw  
Latches



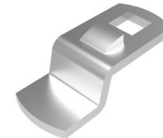
**18820**

Steel Swing  
Bolts



**33915**

One Touch  
Fastener -  
Ball Locking



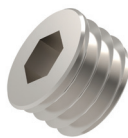
**A0261**

Single Point  
Cams - 6x6 Sq.



**P0070**

Swing Bolts  
Stainless



**P0184.NPT**

Blanking Plugs  
- Dry Seal

# Access & Enclosure Hardware

Critical systems rely on more than core equipment - they also depend on durable access & enclosure hardware. Our engineered **hinges, latches, and handles** are designed for demanding environments, providing secure access, long-term performance, and protecting system integrity across nuclear, energy, and HVAC installations.

# Locking, Indexing & Control

Precision, control, and repeatability are essential where safety, access management, and operational accuracy must work seamlessly together. Our **locking, indexing, and control components** deliver secure positioning, dependable alignment, and consistent performance, enhancing reliability and safety across critical nuclear, energy, and HVAC systems.



**33224**

Ball Lock Pins  
- Mushroom  
Handle, S/S



**70820**

Eight Lobed  
Knobs



**32700**

Index Plungers  
- Pull Grip



**32150**

Spring Plungers



**34042**

Thrust Screws  
- Ball Ended



**74460**

Adjustable  
Clamping Levers



**33226.1**

Ball Lock Pins  
Single Acting -  
Safety Handle



**33200**

Ball Lock Pins  
Single Acting -  
T-Handle, S/S



**77100**

Cast Iron  
Handwheels



**33012**

Detent Pin, S/S



**33024**

Detent Pin -  
L-Handle  
- Shoulder



**32550**

Index Plungers  
- Pull Ring



**32504**

Index Plungers  
- T-Handle Grip



**33300**

Linch Pins



**33320**

Shaft Locking  
Pins



**32820**

Side-Thrust Pins



**32300**

Spring Plungers



**P2022**

Anti-Vibration Bumpers



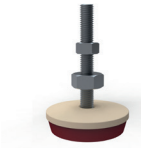
**P2004**

Anti-Vibration Cylinders



**P2101**

Anti-Vibration Fail-Safe Mounts



**P2152**

Heavy Duty Machine Mounts



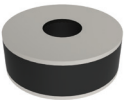
**P2200.AV2**

Levelling Feet



**P2008**

Anti-Vibration Cylinders



**P2081**

Anti-Vibration Washers



**P2186**

Ball Shim Leveller



**P2500.AV**

Acoustic Ceiling Hangers



**P2503**

Acoustic Ceiling Hangers With Nut



**P2458**

Spring Vibration Damper Nine Spring



**P2452**

Spring Vibration Damper One Spring



**P2454**

Spring Vibration Damper Three Spring



**P2150**

Machine Mounts



**P2160**

Stainless Machine Mounts - Rubber Base



**P2183**

Precision Adjuster



**P2181**

Tilted Head Precision Adjuster

---

# Vibration, Mounting & Structural Support

Stable, durable, and vibration-resistant support is key for critical equipment. Our mounting and structural solutions - including **anti-vibration mounts**, **levelling feet**, and **machine mounts** - secure and isolate machinery, reduce noise and mechanical wear, and maintain reliable performance in nuclear, energy, and HVAC applications.



---

# Linear Motion & Power Transmission

Nuclear, energy, and HVAC systems often depend on precise motion and reliable power transmission. Our linear motion and power transmission components - including **rails, carriages, lead screws, and rod ends** - support smooth movement, accurate positioning, and durable load handling across applications such as turbines, generators, plant equipment, and HVAC assemblies.



**R3460**

Ball & Socket  
Joints



**R3553**

Heavy-Duty  
Rod Ends - Male



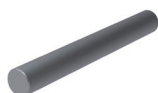
**R3694**

Stainless Single  
Universal Joint



**R3385**

Steel Clevis  
Joints



**L1778**

Aluminium  
Shafts



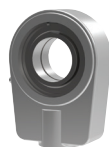
**R3435**

Clevis Retention  
Clips



**L2082**

Drawer Slide  
- Full Extension



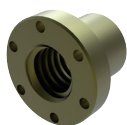
**R3624**

Hydraulic  
Rod Ends



**R3680**

Telescopic  
Universal Joints



**L1331**

Flanged  
Bronze Nuts



**L1322**

Stainless 316  
Lead Screws



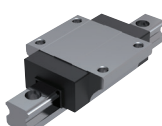
**L1010**

Miniature  
Linear Rail



**L1016**

Linear  
Guide Rail



**L1016**

Flanged/Unflanged  
Carriages - Standard



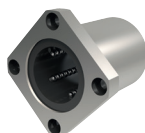
**L1750**

Linear Carriages



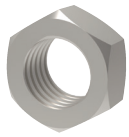
**L1010.C**

Miniature Rail  
Carriages



**L1721**

Stainless Ball  
Bushings



**P0305**

Lock Nuts  
Coarse Thread



**P1212**

Extractable  
Dowel Pins



**P0405**

Flat Knurled  
Thumb Screws



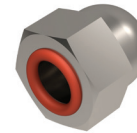
**P0130**

Shoulder Screws  
- Cap Head



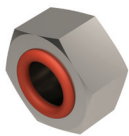
**P0090**

Vented Screws  
- Cap Head



**P0179**

Integral Seal  
Domed Nuts



**P0178**

Integral Seal  
Hex. Nuts



**P0306**

Lock Nuts  
Fine Thread



**P0161**

Captive Thumb  
Screws



**P0380**

External A2  
Circlips



**P1206**

A2 Stainless  
Dowel Pins



**P0396**

Tolerance Rings  
- Hole Variable  
- HV Type



**P0395**

Tolerance Rings  
- Shaft Variable  
- SV Type



**P0224**

Slot Countersunk  
Machine Screws



**P0134**

Ultra Low Head  
- Shoulder Screw



**P0093**

Vented Countersunk  
Machine Screws

# Fasteners, Spacers & Retention

Reliable assemblies start with precision fasteners and retention components. Our **nuts, screws, dowel pins, and tolerance rings** provide vibration-resistant mounting and precise alignment for equipment across nuclear, energy, and HVAC applications, ensuring stable, long-lasting performance.


---


# Clamping & Workholding

Accurate alignment and secure holding are critical for industrial and energy systems. Our clamping and workholding solutions - including **toggle clamps**, **finger clamps**, and **locating rails** - enable precise positioning, rapid access, and durable performance across turbines, generators, and HVAC units in nuclear and energy installations.




  
**42150**  
Heavy Duty  
Push-Pull Toggle  
Clamp




  
**33248**  
Locating Bushes



  
**10940**  
Mini Finger  
Clamps




  
**12031.1**  
Pitbull Clamps




  
**26500**  
T-Slot Covers




  
**10900**  
Fixed Mini Finger  
Clamp Stops




  
**41781.4**  
Hook Type  
Toggle Clamp



  
**41801.4**  
Latch Type  
Toggle Clamps



  
**41821.1**  
Latch Type  
Toggle Clamps



  
**17403**  
Locating Rails




  
**12140**  
Machinable  
Uniforce Clamps




  
**42070**  
Reverse Action  
Push-Pull  
Toggle Clamp



  
**12034**  
Talongrip Clamps



  
**26300**  
T-Slot Scrapers

# Explore more of our range

This catalogue provides just a snapshot of our portfolio, which includes approximately **4,000 product types** and over **111,000 variations**. If you don't see the component you need, our technical team is ready to assist with recommendations

and solutions. **Custom and bespoke designs are also available**, ensuring we can meet the unique requirements of nuclear, energy, and HVAC applications.

 **Wixroyd** | [wixroyd.com](http://wixroyd.com)



**97052**

Chip Hooks



**97053**

Chip Hooks



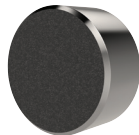
**97060**

Chip Pincers



**79583**

Cold Forming  
Handles



**35630**

Gripping Pads  
- Diamond Coated



**95450**

Hook Spanners  
- With Pin Nose



**A0102**

Keys - Flexi-System



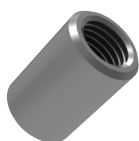
**37150**

Knurled Thumb  
Screws



**33252**

Lanyard - Split  
Ring to Rectangle  
Tab



**S2316**

Lift-Off Hinges  
Off Set



**60880**

Metric Bumpers  
- Round



**S1806**

Surface Mount  
- HVAC Applications



**63020**

Swivel Eye Bolts  
- Male



**25900**

Compact Spherical  
Washer

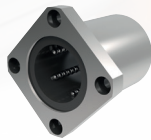


**Automotion** | [automotioncomponents.co.uk](http://automotioncomponents.co.uk)



**L1341**

Cylindrical  
Stainless  
Steel Nuts



**L1719**

Flanged Linear  
Ball Bushings



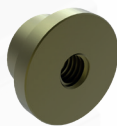
**P1255**

Lanyard - Loop  
to Loop



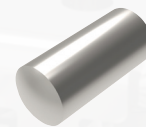
**P0204**

Metric Ultra Low  
Slotted Cap Head  
Screws



**L1332**

Plain Flanged  
Bronze Nuts



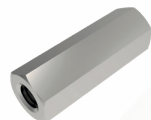
**P1207**

Stainless  
Dowel Pins



**R3566**

Stainless Heavy  
Duty Rod Ends  
- Female



**P0060**

Stainless  
Hexagonal  
Spacers



**P0140**

Steel Shoulder  
Bolts - Hex. Head



**P0070**

Swing Bolts



**P0208**

Ultra Low Head  
Cap Screws

# Application Selection Chart

	Access & Enclosure Hardware	Locking, Indexing & Control	Vibration, Mounting & Structural Support	Linear Motion & Power Transmission	Fasteners, Spacers & Retention	Clamping & Worlholding	Other Components
Ball Lock Pins & Quick Release Pins		●					●
Index Plunger & Pins		●					
Spring Plungers		●					
One Touch Fasteners		●					
Swing Bolts	●						
Washers					●		
T-Nuts & T-Bolts						●	
Thumb Screws							●
Pull Handles	●						
Catches & Latches	●						
Draw Latches	●						
Cam Latch Accessories	●						●
Hinges	●						●
Grippers & Rest Pads							●
Rollers & Bumpers							●
Lifting Points & Shackles							●
Spanners & Hook Spanners							●
Supports & Stops						●	
Clamping Levers		●					
Handwheels		●					
Low Profile Side Clamping						●	
Steel Toggle Clamps						●	
Stainless Steel Toggle Clamps						●	
Linear Guideways				●			
Lead Screws & Nuts				●			●
Linear Bearings				●			●
Telescopic Slides				●			
Lifting Pins, Lifting Bolts & Swing Bolts							●
Vented Screws					●		
Shoulder Screws					●		●

# Application Selection Chart

	Access & Enclosure Hardware	Locking, Indexing & Control	Vibration, Mounting & Structural Support	Linear Motion & Power Transmission	Fasteners, Spacers & Retention	Clamping & Worlholding	Other Components
Captive Screws					●		
Sealing Screws & Plugs					●		
Blanking Plugs	●						
Nuts					●		
Circlips					●		
Tolerance Rings					●		
Dowel Pins					●		
Other Pins							●
Anti-Vibration Components			●				
Levelling Feet			●				
Clevis Joints & Clips				●			
Rod Ends				●			●
Universal Joints				●			

○ Wixroyd   ● Automotion

# In-House Manufacturing Capabilities

Our range of precision fasteners; sealing, captive, shoulder and vented screws benefit from being manufactured in-house at our Chichester site. Our CNC lathes are working day and night to produce our wide selection of shoulder screws, captive screws, vented screws and more in many different sizes and materials!

To ensure we are running as efficiently as possible, we have written custom software that works with our warehouse and ordering system to reduce the average lead time significantly. Our system means that we can offer bespoke variations on our existing products with no hassle, and at lower minimum quantities.



## Sealing Screws

A wide range of head types, drives and o-ring materials.



## Captive Screws

Our popular range of captive screws and mounting fittings are ideal for panel applications.



## Vented Screws

The highest quality vented fasteners, made in Chichester for your vacuum system.



## Shoulder Screws

A vast line-up of shoulder screws in different materials and head styles.

# Bespoke parts made in-house to meet customer requirements

We can custom make special executions of our standard fasteners; varying thread length, thread size and material with an extremely efficient production time.

Get in touch with our technical team to discuss your ideas and see how we can help you with your project. ▼

**sales@wixroyd.com**  
**0333 207 4497**



## High Stock Levels

With a high commitment to stock holding, we can offer next day delivery on most products. We deliver what you need, whenever you need it.



## Streamline Ordering Process

Whether you're an account holder or choose to shop as a guest, our online ordering system is reliable and easy to use.



## Made in Britain

Established in 1951, the Wixroyd Group supply innovative engineering products with free online CAD models and in-house technical expertise.



## High Quality Production

Trusted by some of the best known design & manufacturing companies, we pride ourselves on producing the highest quality components at the best value.



## Technical Sales Support

Available via telephone, email or our live web chat service, we work to find a solution for your application.



## Bespoke Capabilities

Our in-house manufacturing can make your idea a reality. Call our technical team on **0333 207 4497** to discuss.

# Why buy with us?

## Consolidate your purchases to a **single supplier**

In today's fast-paced manufacturing environment, efficiency, cost-effectiveness and reliability are key to staying competitive. One of the most effective ways to streamline your operations and boost performance,

is by consolidating your engineering components purchasing to a **single trusted supplier**. Through the Wixroyd Group, you can now order parts from any or all of our 3 brands on just one PO.

- ✓ **Simplified Procurement Process**
- ✓ **Streamlined Support**
- ✓ **Improved Supply Chain Efficiency**
- ✓ **Consistent Quality & Compatibility**
- ✓ **In-House Manufacturing**
- ✓ **Reduced Admin Costs**
- ✓ **Custom Solutions**
- ✓ **Environment & Sustainability**

Let us at the Wixroyd Group review your supply chain to demonstrate how our partnership can benefit you. **Chat with us today.** ▼

**Wixroyd**  
wixroyd.com | 0333 207 4497

**Automotion Components**  
automotioncomponents.co.uk | 0333 207 4498

**Teknipart**  
teknipart.co.uk | 0333 207 9969

**FREE**  
CONSULTATION

You can also fill out our online form for a free consultation:

[wixroyd.com/supplierconsolidation](https://wixroyd.com/supplierconsolidation)

# Our approach to **sustainability**

In our mission to adopt an earth-conscious operation, we have some greener solutions in place, including;

- ✓ **Solar panels**
- ✓ **Sensor & LED lighting**
- ✓ **Plastic free packaging**
- ✓ **Recycle excess metal used in production**
- ✓ **Electric car charging**
- ✓ **Zero waste-to-landfill certified**



## **Our values**

- ✓ We **care** about our **customers**
- ✓ We **care** about each other
- ✓ We **deliver**
- ✓ We are an **effective team**

**SCAN ME**  
to find out more



**Wixroyd Group Ltd**

Alexia House, Glenmore Business Park  
Portfield Works, Chichester, PO19 7BJ (UK)

To opt out of the Wixroyd database,  
please email [marketing@wixroydgroup.com](mailto:marketing@wixroydgroup.com)

Grp\_P\_1328