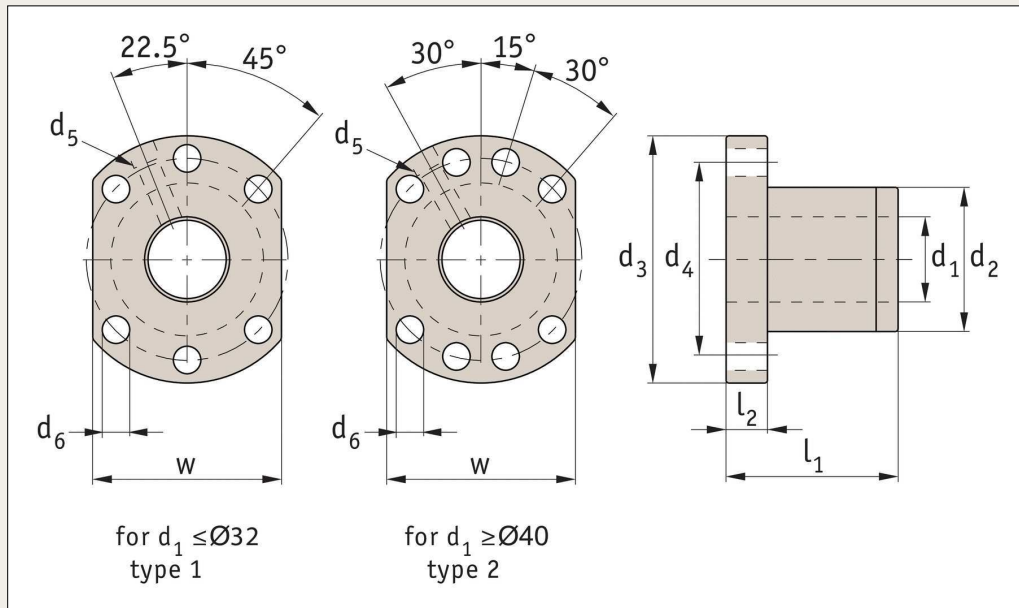


# Flanged Ball Nuts

DIN 69051, form B



## L1380

### Material

Steel (16MnCr5 or 100Cr6), with Vulkolan seals.

### Technical notes

To DIN 69051 form B.  
Axial play for 5mm pitch = 0,05mm;  
for 10mm pitch = 0,10mm; for multi-starts = 0,20mm.  
Preload max. 5% of max. dynamic

load.

For axial run-out, concentricity and parallelism figures see technical pages.

With lubrication and fixing holes.  
For use with ball screws no. L1385.

### Tips

For easy mounting of the ball screw nuts see the nut bracket - part L1387.

For miniature ball screws  $\text{Ø}6$  to  $\text{Ø}14$  see part no. L1379.

### Important notes

Fit ball nut to screw using the sleeve provided. Offer up the ball nut to the screw and slide carefully on. Do not remove the ball nut from the sleeve provided - the ball bearings can come loose rendering the ball nut unusable.

| Order No.   | $d_1$<br>for<br>screw $\text{Ø}$ | Lead | Type   | $d_2$<br>g6 | $d_3$<br>$\pm 0,15$ | $d_4$<br>$\pm 0,15$ | $d_5$<br>for | Stiffness<br>N/ $\mu$ | $d_6$ | $l_1$ | $l_2$ | w<br>$\pm 0,15$ | Ball $\text{Ø}$ | Max. dyn.<br>load C kN | Max. static<br>load $C_0$ kN |
|-------------|----------------------------------|------|--------|-------------|---------------------|---------------------|--------------|-----------------------|-------|-------|-------|-----------------|-----------------|------------------------|------------------------------|
| L1380.16-05 | 16                               | 5    | type 1 | 28          | 48                  | 38                  | M6           | 314                   | 5,5   | 45    | 10    | 40              | 3,175           | 13,53                  | 29,92                        |
| L1380.16-10 | 16                               | 10   | type 1 | 28          | 48                  | 38                  | M6           | 255                   | 5,5   | 57    | 10    | 40              | 3,175           | 10,82                  | 23,55                        |
| L1380.20-05 | 20                               | 5    | type 1 | 36          | 58                  | 47                  | M6           | 382                   | 6,6   | 51    | 10    | 44              | 3,175           | 15,21                  | 38,00                        |
| L1380.25-05 | 25                               | 5    | type 1 | 40          | 62                  | 51                  | M6           | 441                   | 6,6   | 51    | 10    | 48              | 3,175           | 16,91                  | 48,09                        |
| L1380.25-10 | 25                               | 10   | type 1 | 40          | 62                  | 51                  | M6           | 490                   | 6,6   | 80    | 12    | 48              | 4,762           | 28,96                  | 71,54                        |
| L1380.32-05 | 32                               | 5    | type 1 | 50          | 80                  | 65                  | M6           | 529                   | 9,0   | 52    | 12    | 62              | 3,175           | 18,85                  | 62,21                        |
| L1380.32-10 | 32                               | 10   | type 1 | 50          | 80                  | 65                  | M6           | 598                   | 9,0   | 85    | 12    | 62              | 6,350           | 47,12                  | 119,72                       |
| L1380.40-05 | 40                               | 5    | type 2 | 63          | 93                  | 78                  | M8           | 617                   | 9,0   | 55    | 14    | 70              | 3,175           | 20,69                  | 78,34                        |
| L1380.40-10 | 40                               | 10   | type 2 | 63          | 93                  | 78                  | M8           | 715                   | 9,0   | 88    | 14    | 70              | 6,350           | 52,95                  | 152,00                       |
| L1380.50-10 | 50                               | 10   | type 2 | 75          | 110                 | 93                  | M8           | 833                   | 11,0  | 88    | 16    | 85              | 6,350           | 58,88                  | 192,35                       |
| L1380.63-10 | 63                               | 10   | type 2 | 90          | 125                 | 108                 | M8           | 970                   | 11,0  | 93    | 18    | 95              | 6,350           | 65,89                  | 248,68                       |
| L1380.80-10 | 80                               | 10   | type 2 | 105         | 145                 | 125                 | M8           | 1068                  | 14,0  | 93    | 20    | 110             | 6,350           | 72,04                  | 313,36                       |