

# R1460



**Material**  
Aluminium alloy DIN 3,1355  
anodized.

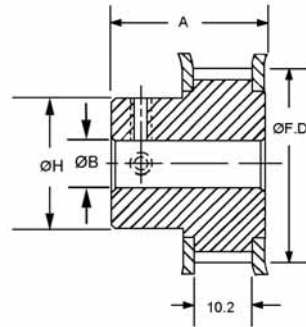
**Technical Notes**  
Other no's of grooves, bores or  
hub styles available on request.

Supplied with 2 set screws.

**Important Notes**  
Operates with TB3 (R1430 &  
R1431) timing belts.

## Double Flange Timing Pulleys - 3mm circ. pitch (HTD)

for belts width 6-9mm



Order No.	Bore +0,03 -0,00	No. of teeth	P.D. Ø	F.D. Ø ±0.4	A ±0,4	H ±0,3	O.D. Ø
TP3A6W9M-18	6,0	18	17,2	20,1	20,8	11,2	16,4
TP3A6W9M-20	6,0	20	19,1	22,7	20,8	12,7	18,3
TP3A6W9M-22	6,0	22	21,0	24,0	20,8	14,3	20,2
TP3A6W9M-24	6,0	24	22,9	26,0	20,8	15,9	22,2
TP3A6W9M-28	6,0	28	26,7	29,8	20,8	17,8	26,0
TP3A6W9M-30	6,0	30	28,6	31,8	20,8	19,7	27,9
TP3A6W9M-32	6,0	32	30,6	33,6	20,8	21,6	29,8
TP3A6W9M-36	6,0	36	34,4	37,4	21,2	25,4	33,6
TP3A6W9M-40	6,0	40	38,2	41,3	21,2	29,2	37,4
TP3A6W9M-44	6,0	44	42,0	45,1	21,2	33,0	41,3

BELTS & PULLEYS



# R1465



**Material**  
Polycarbonate Lexan with  
fibreglass reinforcement 94 V-0  
UL rated.

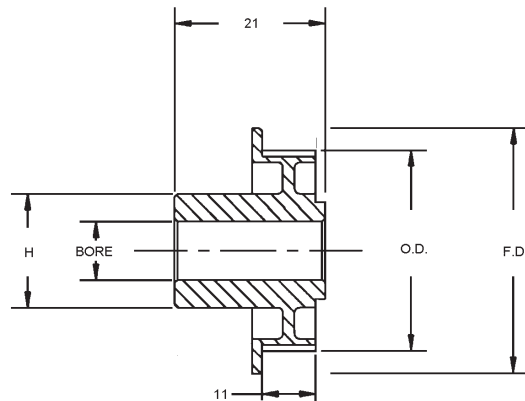
**Lexan material specs:**  
Tensile strength (PSI) 16,000.  
Compressive strength (PSI)  
16,000.  
Flexural strength (PSI) 19,000.  
Impact (ft-lbs/in notch) 2,0.  
Water absorption (24 hrs)  
Equilibrium 73% 0.29%.

**Technical Notes**  
All flanges 1/16" thick.  
One or two set screws are  
optional.

**Important Notes**  
Operates with TB3 (R1430 &  
R1431) timing belts.

## Single Flange Timing Pulleys

for belts width 6-9mm



Order No.	Bore +0,036 -0,000	No. of teeth	O.D. Ø	P.D. Ø	F.D. Ø	H
TP3L4U9M-17	4,0	17	15,4	16,2	22	17
TP3L4U9M-18	4,0	18	16,4	17,2	24	17
TP3L4U9M-19	4,0	19	17,4	18,2	24	17
TP3L4U9M-20	4,0	20	18,3	19,1	24	17
TP3L4U9M-22	4,0	22	20,2	21,0	27	17
TP3L6U9M-25	6,0	25	23,1	23,9	30	19
TP3L6U9M-28	6,0	28	26,0	26,8	32	19
TP3L6U9M-32	6,0	32	29,8	30,6	32	19
TP3L6U9M-36	6,0	36	33,6	34,4	40	22
TP3L6U9M-40	6,0	40	37,4	38,2	45	22
TP3L6U9M-48	6,0	48	45,0	45,8	51	22
TP3L8U9M-60	8,0	60	56,5	57,3	63	22
TP3L8U9M-72	8,0	72	68,0	68,8	74	22
TP3L8U9M-80	8,0	80	75,6	76,4	84	22