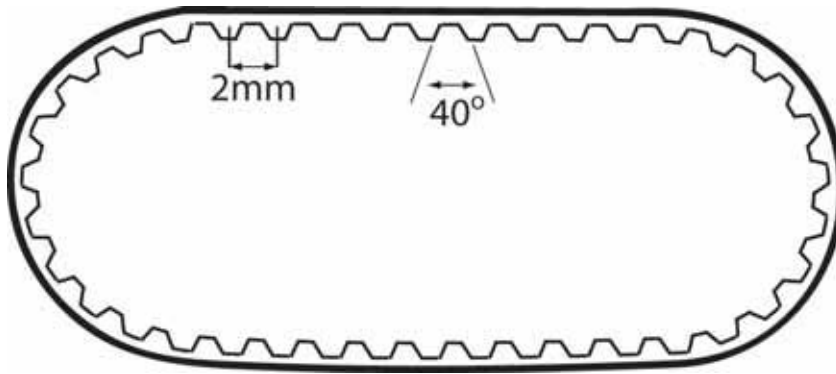


## Timing Belts MXL - 2mm nominal circular pitch

3mm wide



# R1430



### Material

Neoprene (black). Fibreglass reinforced.

### Technical Notes

High Ratios.  
Allows use of small diameter pulleys.  
High speeds.  
High power transmission.  
Long life.  
Wear resistant nylon facing.  
Low profile.  
Quiet operation.  
Max speed up to 20,000 rpm.  
Minimum pulley diameter 6,4 (10 grooves).  
Temperature range +85°C to -34°C.

### Important Notes

Operates with TP3 (R1430) pulleys.

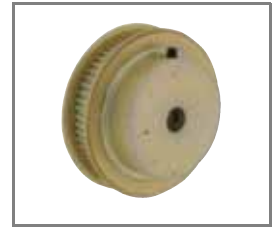
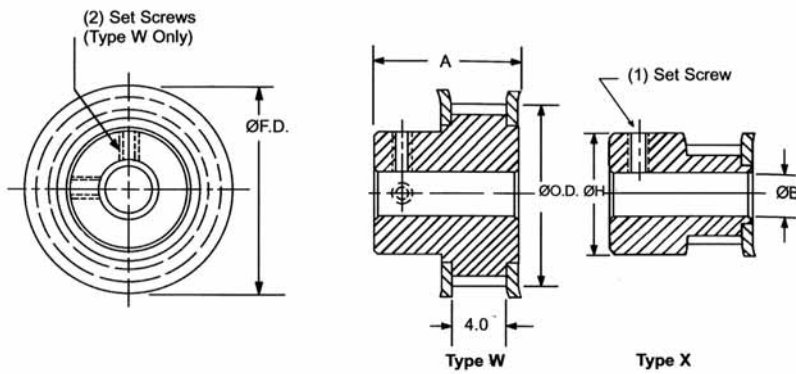
Order No.	No. of Grooves	Length (Ref)
TB7EF2-40	40	81,3
TB7EF2-42	42	85,3
TB7EF2-45	45	91,4
TB7EF2-50	50	101,6
TB7EF2-54	54	109,7
TB7EF2-55	55	111,8
TB7EF2-57	57	115,8
TB7EF2-60	60	121,9
TB7EF2-64	64	130,0
TB7EF2-67	67	136,1
TB7EF2-70	70	142,2
TB7E2-73	73	148,3
TB7EF2-80	80	162,6
TB7EF2-90	90	182,9
TB7EF2-100	100	203,2
TB7EF2-105	105	213,4
TB7EF2-110	110	223,5
TB7EF2-120	120	243,8
TB7EF2-130	130	264,2
TB7EF2-150	150	304,8
TB7EF2-160	160	325,1
TB7EF2-170	170	345,4
TB7EF2-175	175	355,6
TB7EF2-190	190	386,1
TB7EF2-200	200	406,4
TB7EF2-225	225	457,2
TB7EF2-250	250	508,0
TB7EF2-300	300	609,6
TB7EF2-400	400	812,8

BELTS & PULLEYS

linear and rotary motion components

# Automation

## Timing pulleys MXL - 2mm nominal circular pitch for belt width 3mm



# R1430



**Material**  
Aluminium alloy - anodized.

**Important Notes**

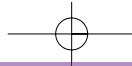
Operates with TB7 (R1430) timing belts.

Order No.	No. of teeth	Type	P.D. Ø	O.D. Ø	F.D. Ø	A	H Ø	BØ +,04 - ,00
TP7A3MW2-10	10	X	6,47	6,0	10,8	11,1	10,8	3,00
TP7A3MW2-11	11	X	7,11	6,6	11,4	11,1	11,4	3,00
TP7A3MW2-12	12	X	7,76	7,3	12,2	11,1	12,2	3,00
TP7A3MW2-14	14	X	9,06	8,5	13,5	11,1	13,5	3,00
TP7A3MW2-15	15	X	9,70	9,2	14,1	11,1	14,1	5,00
TP7A3MW2-16	16	X	10,35	9,8	14,7	11,1	14,7	5,00
TP7A3MW2-18	18	W	11,64	11,1	16,1	12,3	7,9	5,00
TP7A3MW2-20	20	W	12,94	12,4	17,4	12,3	9,2	5,00
TP7A3MW2-21	21	W	13,58	13,1	18,0	12,3	9,9	5,00
TP7A3MW2-22	22	W	14,23	13,7	18,8	12,3	9,9	5,00
TP7A3MW2-24	24	W	15,52	15,0	20,1	13,1	11,2	6,00
TP7A3MW2-28	28	W	18,11	17,6	21,8	13,1	12,5	6,00
TP7A3MW2-30	30	W	19,40	18,9	24,0	13,1	13,9	6,00
TP7A3MW2-32	32	W	20,70	20,2	25,4	13,1	15,2	6,00
TP7A3MW2-36	36	W	23,29	22,8	28,1	13,1	17,2	6,00
TP7A3MW2-40	40	W	25,87	25,4	30,7	13,5	19,2	6,00
TP7A3MW2-42	42	W	27,17	26,7	32,0	13,5	20,5	6,00
TP7A3MW2-44	44	W	28,46	28,0	33,4	13,5	21,8	6,00
TP7A3MW2-48	48	W	31,05	30,5	36,1	13,5	23,8	6,00
TP7A3MW2-60	60	W	38,81	38,3	43,9	13,5	31,0	6,00



BELTS & PULLEYS





## Timing Belts - HTD and MXL



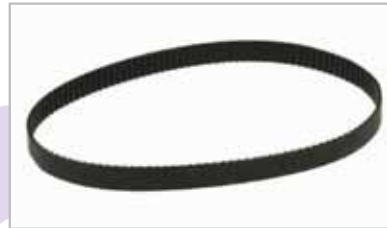
R1430 -  
MXL belts  
2mm pitch  
3mm wide.



R1430 -  
Pulleys for MXL  
belts.



R1431 -  
HTD belts  
3mm pitch  
6mm wide.



R1432 -  
HTD belts  
3mm pitch  
9mm wide.



R1440 -  
Single flange  
pulleys for  
HTD belts  
3mm pitch.



R1445 -  
Double flange  
pulleys for  
HTD belts  
3mm pitch.



R1475 -  
HTD belts  
5mm pitch  
6mm and 9mm  
wide.



R1480 -  
Single flange  
pulleys for  
HTD belts  
5mm pitch.



R1485 -  
Double flange  
pulleys for  
HTD belts  
5mm pitch.

