

# Timing Belts 5,0 mm nominal circular pitch 6,4mm wide

## R1405



### Material

Polyurethane (red) 90A durometer, Ø0,8mm stainless steel cable.

Fibre cable core (aramid) also available (particularly suitable for reverse bend applications).

### Technical Notes

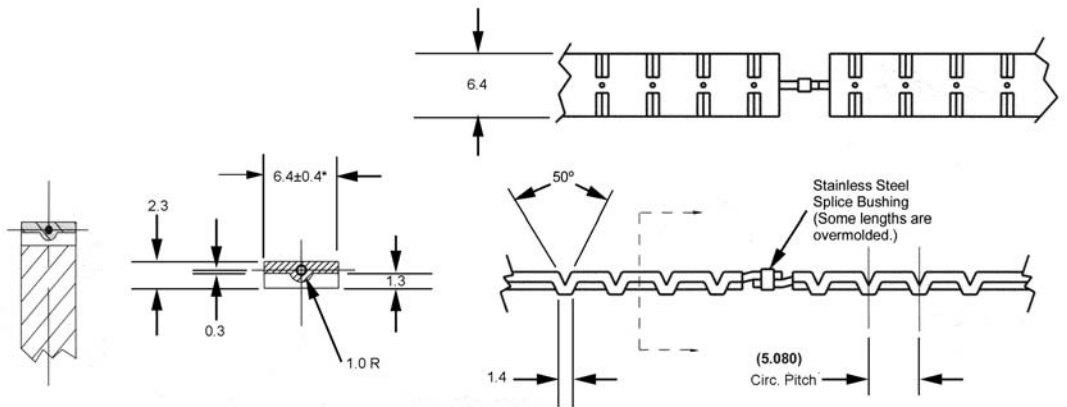
- No flanges required.
- Infinite lengths.
- Silent drive.
- No-walk feature.
- No lubrication.
- Weight: 9 grams/metre.
- Compact design.
- Positive drive.
- Light weight.
- Extra strong.
- Ultimate tensile strength 222N.
- Temperature range +82°C to -26°C.
- Recommended operating load 53N.
- Recommended max operating speed 1,91m/s.
- \* splices are factory over-moulded.

### Tips

Field splice kit available (20TB-7).

### Important Notes

Operates with R1405 belts.



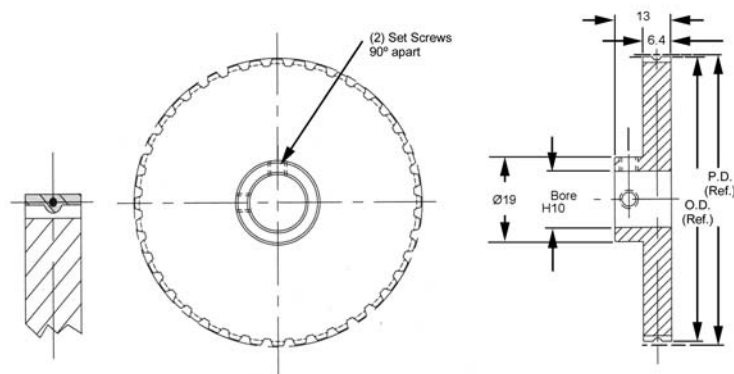
Order No.	No. of Pitches	Length (Ref)
R1405.010	10*	50,8
R1405.015	15*	76,2
R1405.020	20*	101,6
R1405.025	25	127,0
R1405.030	30	152,4
R1405.035	35	177,8
R1405.040	40	203,2
R1405.045	45	228,6
R1405.050	50	254,0
R1405.055	55	279,4
R1405.060	60	304,8
R1405.065	65	330,2
R1405.070	70	355,6
R1405.080	80	406,4
R1405.085	85	431,8
R1405.090	90	457,2
R1405.095	95	482,6
R1405.100	100	508,0
R1405.105	105	533,4
R1405.110	110	558,8
R1405.115	115	584,2
R1405.120	120	609,6
R1405.125	125	635,0
R1405.130	130	660,4
R1405.135	135	685,8
R1405.140	140	711,2
R1405.145	145	736,6
R1405.150	150	762,0
R1405.155	155	787,4
R1405.160	160	812,8
R1405.175	175	889,0
R1405.180	180	914,4
R1405.185	185	939,8
R1405.190	190	965,2
R1405.200	200	1016,0
R1405.210	210	1066,8
R1405.1.5M	-	1,5 metres not spliced
R1405.3.0M	-	3,0 metres not spliced
R1405.7.5M	-	7,5 metres not spliced
R1405.15M	-	15,0 metres not spliced
R1405.30M	-	30,0 metres not spliced



**Automotion**  
linear and rotary motion

# Timing Pulleys - aluminium

5,0mm nominal circular pitch



## R1405



### Material

Aluminium DIN 3,1355 anodized.

### Technical Notes

<sup>1</sup> For 10-12 teeth, hub diameter equals 14,1.

<sup>2</sup> Pulleys Ø19,0mm and smaller for idler use only.

Other no's of teeth available on request.

For larger sizes, please see following pages.

### Important Notes

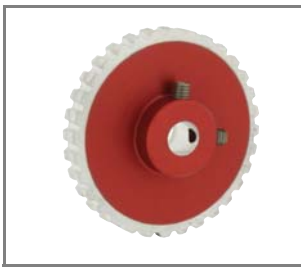
Operates with R1405 belts.



Order No.	Bore Ø	Pitch Diameter	No. of teeth	Outside Diameter
R1405.010-08	Ø8	16,17	10 <sup>1 2</sup>	15,65
R1405.011-08	Ø8	17,79	11 <sup>1 2</sup>	17,27
R1405.012-08	Ø8	19,40	12 <sup>1</sup>	18,87
R1405.014-08	Ø8	22,64	14	22,12
R1405.015-08	Ø8	24,26	15	23,72
R1405.016-08	Ø8	25,87	16	25,35
R1405.017-08	Ø8	27,49	17	26,98
R1405.018-08	Ø8	29,11	18	28,58
R1405.019-08	Ø8	30,72	19	30,20
R1405.020-08	Ø8	32,34	20	31,83
R1405.021-08	Ø8	33,96	21	33,43
R1405.022-08	Ø8	35,57	22	35,05
R1405.023-08	Ø8	37,19	23	36,68
R1405.024-08	Ø8	38,81	24	38,28
R1405.025-08	Ø8	40,43	25	39,90
R1405.027-08	Ø8	43,66	27	43,13
R1405.028-08	Ø8	45,28	28	44,75
R1405.029-08	Ø8	46,89	29	46,38
R1405.030-08	Ø8	48,51	30	47,98
R1405.032-08	Ø8	51,74	32	51,23
R1405.036-08	Ø8	58,21	36	57,68
R1405.040-08	Ø8	64,68	40	64,16
R1405.042-08	Ø8	67,91	42	67,39
R1405.044-08	Ø8	71,15	44	70,64
R1405.045-08	Ø8	72,77	45	72,24
R1405.048-08	Ø8	77,62	48	77,09
R1405.050-08	Ø8	80,85	50	80,34
R1405.060-08	Ø8	97,02	60	96,49
R1405.072-08	Ø8	116,43	72	155,90
R1405.010-10	Ø10	16,17	10 <sup>1 2</sup>	15,65
R1405.011-10	Ø10	17,79	11 <sup>1 2</sup>	17,27
R1405.012-10	Ø10	19,40	12 <sup>1</sup>	18,87
R1405.014-10	Ø10	22,64	14	22,12
R1405.015-10	Ø10	24,26	15	23,72
R1405.016-10	Ø10	25,87	16	25,35
R1405.017-10	Ø10	27,49	17	26,98
R1405.018-10	Ø10	29,11	18	28,58
R1405.019-10	Ø10	30,72	19	30,20
R1405.020-10	Ø10	32,34	20	31,83
R1405.021-10	Ø10	33,96	21	33,43
R1405.022-10	Ø10	35,57	22	35,05
R1405.023-10	Ø10	37,19	23	36,68
R1405.024-10	Ø10	38,81	24	38,28

linear and rotary motion components

# Automation



## Timing Pulleys - aluminium

5,0mm nominal circular pitch

# R1405



### Material

Aluminium DIN 3,1355 anodized.

### Technical Notes

<sup>1</sup> For 10-12 teeth, hub diameter equals 14,1.

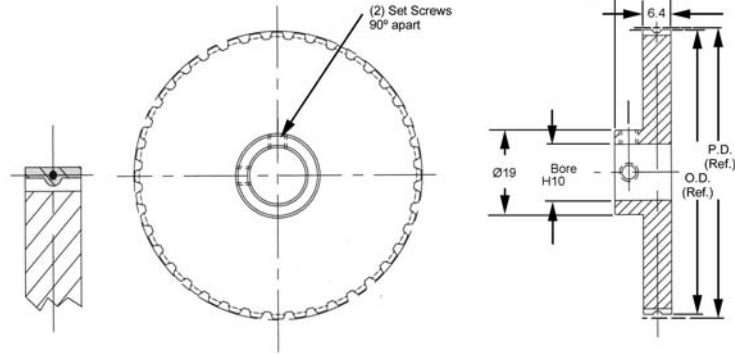
<sup>2</sup> Pulleys Ø19,0mm and smaller for idler use only.

Other no's of teeth available on request.

For smaller sizes, please see previous pages

### Important Notes

Operates with R1405 belts.



Order No.	Bore Ø	Pitch Diameter	No. of teeth	Outside Diameter
R1405.025-10	Ø10	40,43	25	39,90
R1405.027-10	Ø10	43,66	27	43,13
R1405.028-10	Ø10	45,28	28	44,75
R1405.029-10	Ø10	46,89	29	46,38
R1405.030-10	Ø10	48,51	30	47,98
R1405.032-10	Ø10	51,74	32	51,23
R1405.036-10	Ø10	58,21	36	57,68
R1405.040-10	Ø10	64,68	40	64,16
R1405.042-10	Ø10	67,91	42	67,39
R1405.044-10	Ø10	71,15	44	70,64
R1405.045-10	Ø10	72,77	45	72,24
R1405.048-10	Ø10	77,62	48	77,09
R1405.050-10	Ø10	80,85	50	80,34
R1405.060-10	Ø10	97,02	60	96,49
R1405.072-10	Ø10	116,43	72	155,90
R1405.010-12	Ø12	16,17	10 <sup>1 2</sup>	15,65
R1405.011-12	Ø12	17,79	11 <sup>1 2</sup>	17,27
R1405.012-12	Ø12	19,40	12 <sup>1</sup>	18,87
R1405.014-12	Ø12	22,64	14	22,12
R1405.015-12	Ø12	24,26	15	23,72
R1405.016-12	Ø12	25,87	16	25,35
R1405.017-12	Ø12	27,49	17	26,98
R1405.018-12	Ø12	29,11	18	28,58
R1405.019-12	Ø12	30,72	19	30,20
R1405.020-12	Ø12	32,34	20	31,83
R1405.021-12	Ø12	33,96	21	33,43
R1405.022-12	Ø12	35,57	22	35,05
R1405.023-12	Ø12	37,19	23	36,68
R1405.024-12	Ø12	38,81	24	38,28
R1405.025-12	Ø12	40,43	25	39,90
R1405.027-12	Ø12	43,66	27	43,13
R1405.028-12	Ø12	45,28	28	44,75
R1405.029-12	Ø12	46,89	29	46,38
R1405.030-12	Ø12	48,51	30	47,98
R1405.032-12	Ø12	51,74	32	51,23
R1405.036-12	Ø12	58,21	36	57,68
R1405.040-12	Ø12	64,68	40	64,16
R1405.042-12	Ø12	67,91	42	67,39
R1405.044-12	Ø12	71,15	44	70,64
R1405.045-12	Ø12	72,77	45	72,24
R1405.048-12	Ø12	77,62	48	77,09
R1405.050-12	Ø12	80,85	50	80,34
R1405.060-12	Ø12	97,02	60	96,49
R1405.072-12	Ø12	116,43	72	155,90

