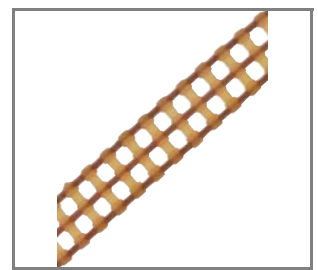
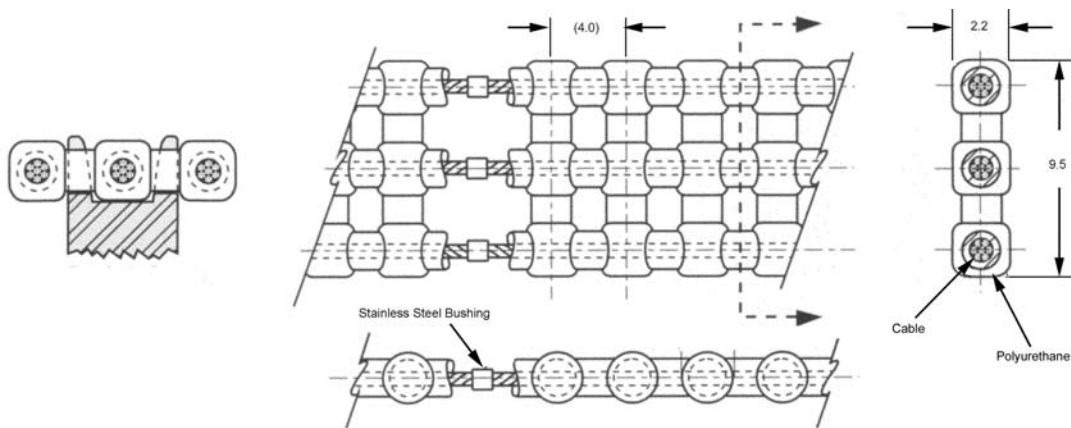


Dual Chains, 4mm nominal circular pitch



R1040



Material

Triple 0,8mm Ø stainless steel cable encased in polyurethane (brown).

This series is not available with aramid core configuration.

Technical Notes

Zero backlash.
 Mass 20 grams/metre.
 Silent drive.
 No lubrication.
 Infinite lengths.
 90A Durometer.
 Positive drive.
 Non-magnetic.
 Ultimate tensile strength 533N-133N/PIN when belt is used in open loop configuration (without splice, no crimp bushing).
 Temperature range +82°C to -26°C.
 Recommended operating load 133N.
 Recommended max operating speed 1,91 m/s.

Tips

Reduce operating load rating by 50% for self splices
 Self splice kit available (order no. R1010.SSK).

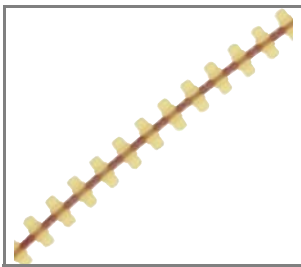
Important Notes

Operates with R1040 series sprockets.

Order No.	No. of Pitches	Length (Ref)
R1040.D030	30	120,0
R1040.D035	35	140,0
R1040.D040	40	160,0
R1040.D045	45	180,0
R1040.D050	50	200,0
R1040.D055	55	220,0
R1040.D060	60	240,0
R1040.D070	70	280,0
R1040.D080	80	320,0
R1040.D090	90	360,0
R1040.D100	100	400,0
R1040.D110	110	440,0
R1040.D120	120	480,0
R1040.D130	130	520,0
R1040.D140	140	560,0
R1040.D150	150	600,0
R1040.D160	160	640,0
R1040.D170	170	680,0
R1040.D180	180	720,0
R1040.D190	190	760,0
R1040.D200	200	800,0
R1040.D210	210	840,0
R1040.D220	220	880,0
R1040.D230	230	920,0
R1040.D240	240	960,0
R1040.D250	250	1000,0
R1040.D260	260	1040,0
R1040.D270	270	1080,0
R1040.D280	280	1120,0
R1040.D290	290	1160,0
R1040.D300	300	1200,0
R1040.D310	310	1240,0
R1040.D320	320	1280,0
R1040.D330	330	1320,0
R1040.D340	340	1360,0
R1040.D350	350	1520,0
R1040.D370	370	1600,0
R1040.D400	400	1680,0
R1040.D440	440	1760,0
R1040.1,5M	-	1,5 metres not spliced
R1040.3,0M	-	3,0 metres not spliced
R1040.7,5M	-	7,5 metres not spliced
R1040.15M	-	15,0 metres not spliced
R1040.30M	-	30,0 metres not spliced



Min-E-Pitch Belts, 4mm nominal circular pitch



R1040



Material

Single 0,8mm Ø stainless steel cable encased in polyurethane (yellow).

This series is not available with aramid core configuration.

Technical Notes

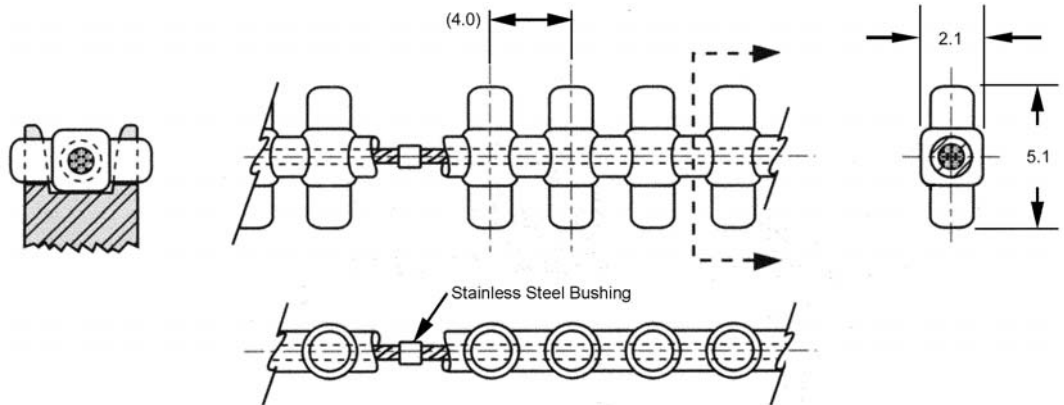
- Zero backlash.
- Odd angles.
- Mass 11 grams/metre.
- Silent drive.
- No lubrication.
- Infinite lengths.
- 90A Durometer.
- Positive drive.
- Ultimate tensile strength 222N-40N/PIN when belt is used in open loop configuration (without splice, no crimp bushing).
- Temperature range +82°C to -26°C.
- Recommended operating load 53N.
- Recommended max operating speed 1,91 m/s.

Tips

- Reduce operating load rating by 50% for field splices.
- Self splice kit available R1040.SSK.

Important Notes

Operate with R1040 series chain.



Order No.	No. of Pitches	Length (Ref)
R1040.S030	30	120,0
R1040.S035	35	140,0
R1040.S040	40	160,0
R1040.S045	45	180,0
R1040.S050	50	200,0
R1040.S055	55	220,0
R1040.S060	60	240,0
R1040.S070	70	280,0
R1040.S080	80	320,0
R1040.S090	90	360,0
R1040.S100	100	400,0
R1040.S110	110	440,0
R1040.S120	120	480,0
R1040.S130	130	520,0
R1040.S140	140	560,0
R1040.S150	150	600,0
R1040.S160	160	640,0
R1040.S170	170	680,0
R1040.S180	180	720,0
R1040.S190	190	760,0
R1040.S200	200	800,0
R1040.S210	210	840,0
R1040.S220	220	880,0
R1040.S230	230	920,0
R1040.S240	240	960,0
R1040.S250	250	1000,0
R1040.S260	260	1040,0
R1040.S270	270	1080,0
R1040.S280	280	1120,0
R1040.S290	290	1160,0
R1040.S300	300	1200,0
R1040.S310	310	1240,0
R1040.S320	320	1280,0
R1040.S330	330	1320,0
R1040.S340	340	1360,0
R1040.S350	350	1520,0
R1040.S370	370	1600,0
R1040.S400	400	1680,0
R1040.S440	440	1760,0
R1040.1,5M	-	1,5 metres not spliced
R1040.3,0M	-	3,0 metres not spliced
R1040.7,5M	-	7,5 metres not spliced
R1040.15M	-	15,0 metres not spliced
R1040.30M	-	30,0 metres not spliced



Autom
linear and rotary motion