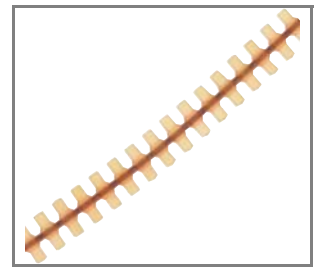
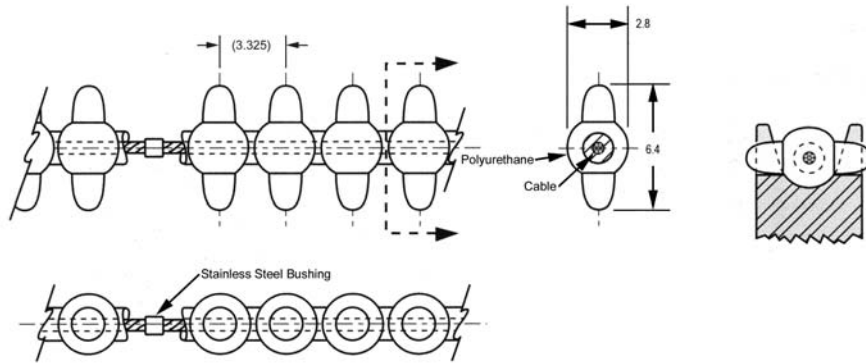


Gear Drive Belts, 3,325 circular pitch

Gear Drive Belts



R1030



Material

0,8mm Ø stainless steel cable encased in polyurethane (red).

Fibre cable core (aramid) also available (particularly suitable for reverse bend applications). When ordering aramid core type add suffix -EF to order no.

Technical Notes

Positive drive.
Accommodates twists and turns.
Odd angles.
No lubrication.
Infinite lengths.
Zero backlash.
Mass 12 grams/metre.
90A Durometer.
Ultimate tensile strength 222N-40N/PIN when belt is used in open loop configuration (without splice, no crimp bushing).
Recommended operating load 53N.
Recommended max operating speed 1,91 m/s.
Temperature range +82°C to -26°C.

Tips

Self splice kits available (R1030.SSK).
Reduce operating load rating by 50% for self splices.

Important Notes

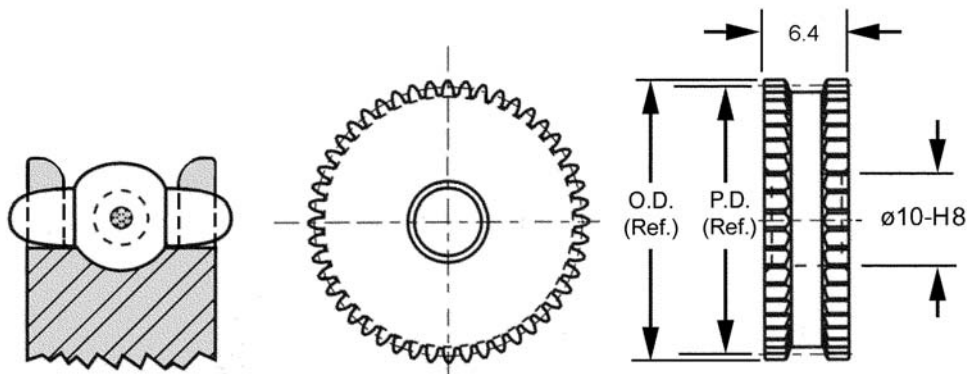
Operates with R1030 series sprockets.



Order No.	No. of Pitches	Length (Ref)
R1030.050	50	166,3
R1030.052	52	172,9
R1030.054	54	179,6
R1030.056	56	186,2
R1030.058	58	192,9
R1030.060	60	199,5
R1030.062	62	206,2
R1030.064	64	212,8
R1030.066	66	219,5
R1030.068	68	226,1
R1030.070	70	232,8
R1030.075	75	249,4
R1030.080	80	266,0
R1030.085	85	282,6
R1030.090	90	299,3
R1030.095	95	315,9
R1030.100	100	332,5
R1030.105	105	349,1
R1030.110	110	365,8
R1030.115	115	382,4
R1030.120	120	399,0
R1030.130	130	432,3
R1030.140	140	465,5
R1030.150	150	498,8
R1030.160	160	532,0
R1030.170	170	565,3
R1030.180	180	598,5
R1030.190	190	631,8
R1030.200	200	665,0
R1030.220	220	731,5
R1030.240	240	798,0
R1030.260	260	864,5
R1030.280	280	931,0
R1030.300	300	997,5
R1030.320	320	1064,0
R1030.360	360	1197,0
R1030.420	420	1396,0
R1030.1,5M	-	1,5 metres not spliced
R1030.3,0M	-	3,0 metres not spliced
R1030.7,5M	-	7,5 metres not spliced
R1030.15M	-	15,0 metres not spliced
R1030.30M	-	30,0 metres not spliced

E-Z Entry Belt Pulleys - aluminium, hubless

3,325mm circular pitch



R1030



Material

Aluminium DIN 3,1355 anodized.

Technical Notes

² pulleys with 19,0mm PD and smaller for idler use only.

Important Notes

Operate with R1030 series chain.

Order No.	No. of Teeth	Pitch Diameter	Outside Diameter
R1030.015-HL	15 ²	15,88	17,99
R1030.016-HL	16 ²	16,93	19,05
R1030.018-HL	18 ²	19,05	21,17
R1030.020-HL	20	21,17	23,28
R1030.021-HL	21	22,23	24,34
R1030.024-HL	24	25,40	27,52
R1030.030-HL	30	31,75	33,87
R1030.036-HL	36	38,10	40,22
R1030.042-HL	42	44,45	46,57
R1030.048-HL	48	50,80	52,92
R1030.060-HL	60	63,50	65,62
R1030.072-HL	72	76,20	78,32
R1030.096-HL	96	101,60	103,72
R1030.120-HL	120	127,00	129,12
R1030.144-HL	144	152,40	154,52

linear and rotary motion components

Automation