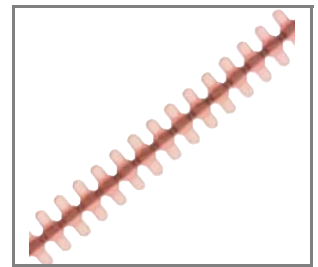
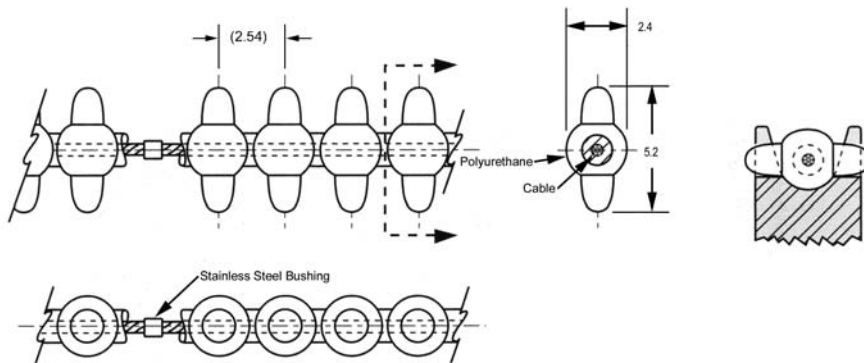


Gear Drive Belts 2,54 nominal circular pitch



R1025



Material

0,8mm Ø stainless steel cable encased in polyurethane (red).

Fibre cable core (aramid) also available (particularly suitable for reverse bend applications). When ordering aramid core type add suffix -EF to order no.

Technical Notes

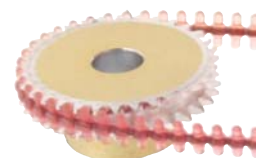
Odd angles.
Infinite lengths.
Accommodates twists and turns.
Positive drive.
Zero backlash.
No lubrication.
Mass 10 grams/metre.
90A Durometer.
Ultimate tensile strength 222N-40N/PIN when belt is used in open loop configuration (without splice, no crimp bushing).
Temperature range +85°C to -26°C.
Recommended operating load 53N.
Recommended max operating speed 1,91m/s.

Tips

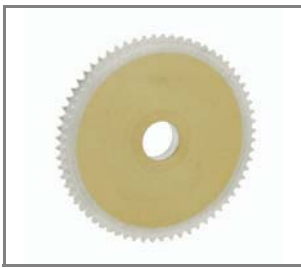
Self splice kits available R1025.SSK.
Reduce operating load rating by 50% for field splices.

Important Notes

Operates with R1025 series sprockets.



Order No.	No. of Pitches	Length (Ref)
R1025.050	50	127,0
R1025.052	52	132,1
R1025.054	54	137,2
R1025.056	56	142,2
R1025.058	58	147,3
R1025.060	60	152,4
R1025.065	65	165,1
R1025.070	70	177,8
R1025.075	75	190,5
R1025.080	80	203,2
R1025.085	85	215,9
R1025.090	90	228,6
R1025.100	100	254,0
R1025.110	110	279,4
R1025.120	120	304,8
R1025.130	130	330,2
R1025.140	140	355,6
R1025.150	150	381,0
R1025.160	160	406,4
R1025.170	170	431,8
R1025.180	180	457,2
R1025.190	190	482,6
R1025.200	200	508,0
R1025.210	210	533,4
R1025.220	220	558,8
R1025.230	230	584,2
R1025.240	240	609,6
R1025.250	250	635,0
R1025.260	260	660,4
R1025.270	270	685,8
R1025.280	280	711,2
R1025.300	300	762,0
R1025.350	350	889,0
R1025.400	400	1016,0
R1025.480	480	1143,0
R1025.500	500	1270,0
R1025.800	800	2032,0
R1025.1,5M	-	1,5 metres not spliced
R1025.3,0M	-	3,0 metres not spliced
R1025.7,5M	-	7,5 metres not spliced
R1025.15M	-	15,0 metres not spliced
R1025.30M	-	30,0 metres not spliced



R1025

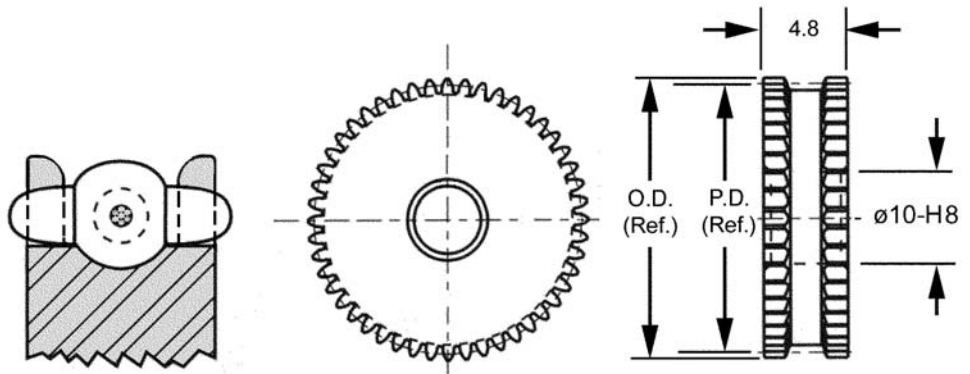


Material
Aluminium DIN 3,1355 anodized.

Important Notes
Operate with R1025 series chain.

E-Z Entry Belt Pulleys - hubless

2,54 nominal circular pitch



Order No.	Bore \varnothing	No. of Teeth	Outside Diameter	Pitch Diameter
R1025.024-HL	Ø10	24	21,02	19,40
R1025.026-HL	Ø10	26	22,64	21,02
R1025.028-HL	Ø10	28	24,26	22,64
R1025.030-HL	Ø10	30	25,87	24,26
R1025.032-HL	Ø10	32	27,49	25,87
R1025.036-HL	Ø10	36	30,72	29,11
R1025.040-HL	Ø10	40	33,96	32,34
R1025.048-HL	Ø10	48	40,43	38,81
R1025.056-HL	Ø10	56	46,89	45,28
R1025.064-HL	Ø10	64	53,36	51,74
R1025.072-HL	Ø10	72	59,83	58,21
R1025.080-HL	Ø10	80	66,30	64,68
R1025.088-HL	Ø10	88	72,77	71,15
R1025.096-HL	Ø10	96	79,23	77,62
R1025.112-HL	Ø10	112	92,17	90,55
R1025.128-HL	Ø10	128	105,11	103,48

