



P1090

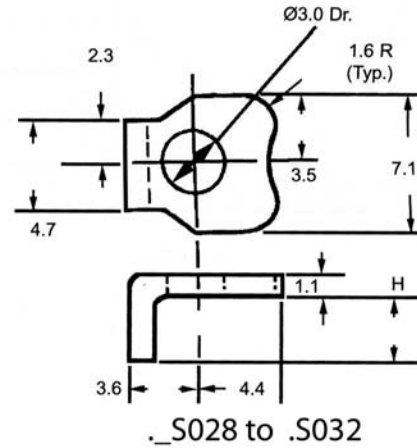
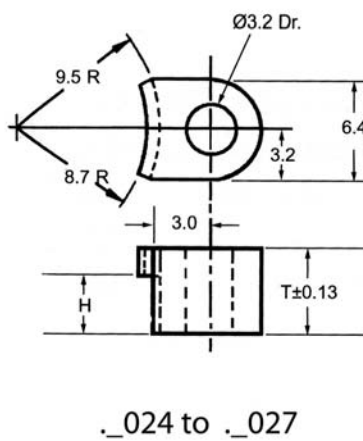
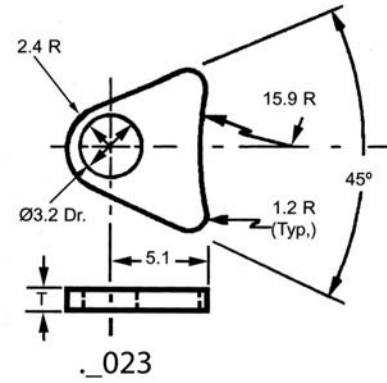
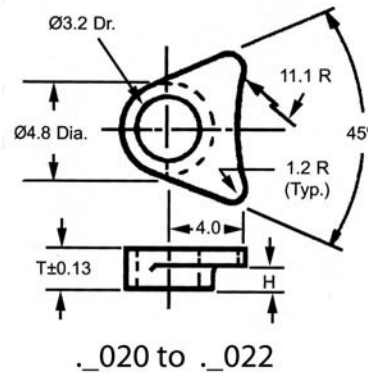


Material
Stainless steel A2(AISI303) DIN 1,4305 or aluminium 2024.

Technical Notes
Quick release, faster clamping and self-locking.

Tips
Bolt circle: use the larger of the following two bolt circles:
add 6,86 to max. flange diameter
OR add 10,16 to max. groove base diameter.

Clamp Cleats



Order No.	Material	Type	H	T
P1090.S020	Stainless	A	1,2	2,36
P1090.S021	Stainless	A	2,8	3,96
P1090.S022	Stainless	A	5,3	6,91
P1090.S023	Stainless	B	-	1,02
P1090.S024	Stainless	C	0,5	1,65
P1090.S025	Stainless	C	1,3	2,41
P1090.S026	Stainless	C	2,9	4,06
P1090.S027	Stainless	C	4,5	5,59
P1090.S028	Stainless	D	Flat	-
P1090.S029	Stainless	D	1,2	-
P1090.S030	Stainless	D	2,0	-
P1090.S031	Stainless	D	2,8	-
P1090.S032	Stainless	D	3,6	-
P1090.A020	Aluminium	A	1,2	2,36
P1090.A021	Aluminium	A	2,8	3,96
P1090.A022	Aluminium	A	5,3	6,91
P1090.A023	Aluminium	B	-	1,02
P1090.A024	Aluminium	C	0,5	1,65
P1090.A025	Aluminium	C	1,3	2,41
P1090.A026	Aluminium	C	2,9	4,06
P1090.A027	Aluminium	C	4,5	5,59