



P1032



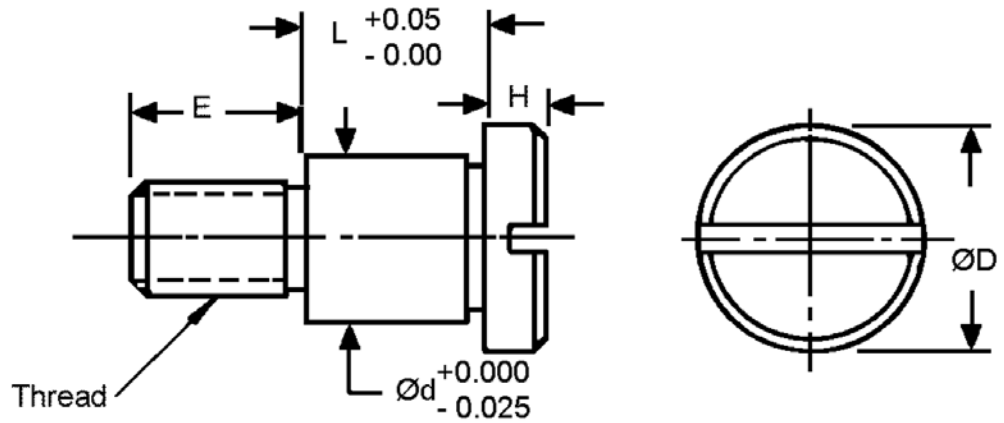
Material
Stainless steel A2(AISI304,
DIN1.4305).

Technical Notes
Stainless steel A2 is a hard stainless steel, which may (in harsh conditions) exhibit slight signs of rusting. This is a non-magnetic grade of stainless steel.

Tips
These A2 shoulder screws are less expensive than the A4 (AISI416) grade - see part no. P1031, which are softer but even more resistant to corrosion. Typically used for food and pharmaceutical applications.



Shoulder Screws - slot head stainless steel A2(AISI304)



Order No.	Thread	Ød	L	ØD	H	E
P1032.04-04	M3x0,5	3,987 (4)	4,01	6	3	4
P1032.04-05	M3x0,5	3,987 (4)	5,01	6	3	4
P1032.04-06	M3x0,5	3,987 (4)	6,01	6	3	4
P1032.04-08	M3x0,5	3,987 (4)	8,01	6	3	4
P1032.04-10	M3x0,5	3,987 (4)	10,01	6	3	4
P1032.05-04	M4x0,7	4,987 (5)	4,01	8	4	5
P1032.05-05	M4x0,7	4,987 (5)	5,01	8	4	5
P1032.05-06	M4x0,7	4,987 (5)	6,01	8	4	5
P1032.05-08	M4x0,7	4,987 (5)	8,01	8	4	5
P1032.05-10	M4x0,7	4,987 (5)	10,01	8	4	5
P1032.05-12	M4x0,7	4,987 (5)	12,01	8	4	5
P1032.05-14	M4x0,7	4,987 (5)	14,01	8	4	5
P1032.05-16	M4x0,7	4,987 (5)	16,01	8	4	5
P1032.05-20	M4x0,7	4,987 (5)	20,01	8	4	5
P1032.05-25	M4x0,7	4,987 (5)	25,01	8	4	5
P1032.05-30	M4x0,7	4,987 (5)	30,01	8	4	5
P1032.06-04	M5x0,8	5,987 (6)	4,01	10	5	6
P1032.06-05	M5x0,8	5,987 (6)	5,01	10	5	6
P1032.06-06	M5x0,8	5,987 (6)	6,01	10	5	6
P1032.06-08	M5x0,8	5,987 (6)	8,01	10	5	6
P1032.06-10	M5x0,8	5,987 (6)	10,01	10	5	6
P1032.06-12	M5x0,8	5,987 (6)	12,01	10	5	6
P1032.06-14	M5x0,8	5,987 (6)	14,01	10	5	6
P1032.06-16	M5x0,8	5,987 (6)	16,01	10	5	6
P1032.06-20	M5x0,8	5,987 (6)	20,01	10	5	6
P1032.06-25	M5x0,8	5,987 (6)	25,01	10	5	6
P1032.06-30	M5x0,8	5,987 (6)	30,01	10	5	6
P1032.08-06	M6x1,0	7,987 (8)	6,01	12	6	11
P1032.08-08	M6x1,0	7,987 (8)	8,01	12	6	11
P1032.08-10	M6x1,0	7,987 (8)	10,01	12	6	11
P1032.08-12	M6x1,0	7,987 (8)	12,01	12	6	11
P1032.08-16	M6x1,0	7,987 (8)	16,01	12	6	11
P1032.10-20	M6x1,0	9,987 (10)	8,01	12	6	11
P1032.10-10	M6x1,0	9,987 (10)	12,01	12	6	11
P1032.11-08	M8x1,25	9,987 (10)	8,01	14	7	12
P1032.11-12	M8x1,25	9,987 (10)	12,01	14	7	12
P1032.11-16	M8x1,25	9,987 (10)	16,01	14	7	12
P1032.12-12	M10x1,5	11,987 (12)	12,01	20	8	16
P1032.12-25	M10x1,5	11,987 (12)	25,01	20	8	16
P1032.12-20	M10x1,5	11,987 (12)	20,01	20	8	16

