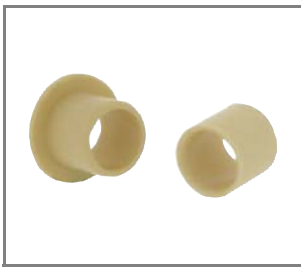


Bearings - Thermoplastic, medium duty

plain and flanged

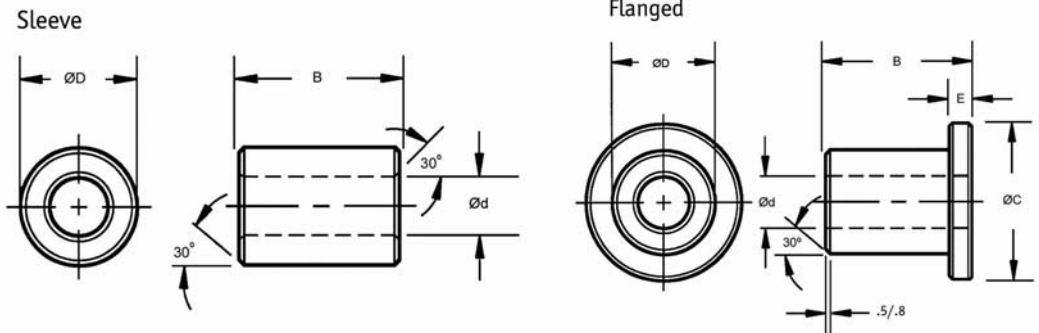


L1816



Material
Thermoplastic - see page XX for specification.

Technical Notes
Max. load 662Kg/cm².



1
Other bearings versions and imperial sizes readily available.

Order No. Flange	Order No. Sleeve	Ød	ØD	ØC	B	E +0 -,14	i.d. ¹ max.	i.d. ¹ min.	bore ¹ max.	Hous. bore ¹ min.	Shaft max.	Shaft min.
B18M-1	B17M-1	3	4,5	7,5	3	0,75	3,054	3,014	4,512	4,500	3,000	2,975
B18M-2	B17M-2	3	4,5	7,5	5	0,75	3,054	3,014	4,512	4,500	3,000	2,975
B18M-3	B17M-3	4	5,5	9,5	4	0,75	4,068	4,020	5,512	5,500	4,000	3,970
B18M-4	B17M-4	4	5,5	9,5	6	0,75	4,068	4,020	5,512	5,500	4,000	3,970
B18M-5	B17M-5	5	7	11	5	1	5,068	5,020	7,015	7,000	5,000	4,970
B18M-6	B17M-6	6	8	12	6	1	6,068	6,020	8,015	8,000	6,000	5,970
B18M-7	B17M-7	6	8	12	8	1	6,068	6,020	8,015	8,000	6,000	5,970
B18M-8	B17M-8	6	8	12	10	1	6,068	6,020	8,015	8,000	6,000	5,970
B18M-9	B17M-9	7	9	15	12	1	7,083	7,025	9,015	9,000	7,000	6,964
B18M-10	B17M-10	8	10	15	5,5	1	8,083	8,025	10,015	10,000	8,000	7,964
B18M-11	B17M-11	8	10	15	7,5	1	8,083	8,025	10,015	10,000	8,000	7,964
B18M-12	B17M-12	8	10	15	10	1	8,083	8,025	10,015	10,000	8,000	7,964
B18M-13	B17M-13	10	12	18	6	1	10,083	10,025	12,018	12,000	10,000	9,964
B18M-14	B17M-14	10	12	18	9	1	10,083	10,025	12,018	12,000	10,000	9,964
B18M-15	B17M-15	10	12	18	10	1	10,083	10,025	12,018	12,000	10,000	9,964
B18M-16	B17M-16	10	12	18	12	1	10,083	10,025	12,018	12,000	10,000	9,964
B18M-17	B17M-17	10	12	18	15	1	10,083	10,025	12,018	12,000	10,000	9,964
B18M-18	B17M-18	10	12	18	17	1	10,083	10,025	12,018	12,000	10,000	9,964
B18M-19	B17M-19	12	14	20	10	1	12,102	12,032	14,018	14,000	12,000	11,957
B18M-20	B17M-20	12	14	20	11	1	12,102	12,032	14,018	14,000	12,000	11,957

