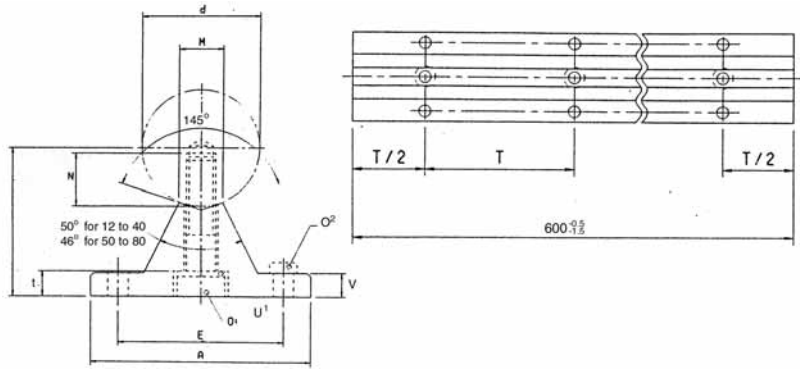


Shaft Support Rail

complete shaft and rail, use with L1752



L1780



Material

Hardened and ground shaft and aluminium alloy support rail. For open linear bushings.

Technical Notes

Provides maximum rigidity and stiffness to the system.

Advise length required.

Tips

Up to 6 metres long.

Important Notes

Use with unflanged linear carriage L1752 (page 226).

Order No. Without holes	Order No. With T1 hole spacing	Order No. With T2 hole spacing	d	H ¹ ±0,01	A	V	M	O ¹ DIN 6912-8.8	U ¹ DIN 7980	N	E	t	O ₂ ¹ DIN 6912-8.8	T1	T2
SRL12	SRL12-T1	SRL12-T2	12	22	40	5	5,8	M4x20	4	8	29	4,5	M4x12	75	120
SRL16	SRL16-T1	SRL16-T2	16	26	45	5	7	M5x20	6	9	33	7,6	M5x16	100	150
SRL20	SRL20-T1	SRL20-T2	20	32	52	6	8,3	M6x25	6	11	37	8,6	M6x16	100	150
SRL25	SRL25-T1	SRL25-T2	25	36	57	6	10,8	M8x30	8	15	42	9	M6x16	120	200
SRL30	SRL30-T1	SRL30-T2	30	42	69	7	11	M10x35	10	17	51	10	M8x25	150	200
SRL40	SRL40-T1	SRL40-T2	40	50	73	8	15	M10x40	10	19	55	9,5	M8x25	200	300
SRL50	SRL50-T1	SRL50-T2	50	60	84	9	19	M12x45	12	21	63	11,5	M10x30	200	300
SRL60	SRL60-T1	SRL60-T2	60	68	94	10	25	M14x50	14	25	72	13	M10x30	300	-
SRL80	SRL80-T1	SRL80-T2	80	86	116	12	34	M16x60	16	28	92	15	M12x35	300	-

Max. Lengths of support rails

Part No.	Max. Length	N	Pitch P
SBS16A	1390	20	150
SBS20A	1390	20	150
SBS25A	1850	25	200
SBS30A	1850	25	200
SBS35A	1860	30	200
SBS40A	1860	30	200
SBS50A	2070	35	200



linear and rotary motion components

Automation



L1752



Technical Notes
Complete unit with bearings.

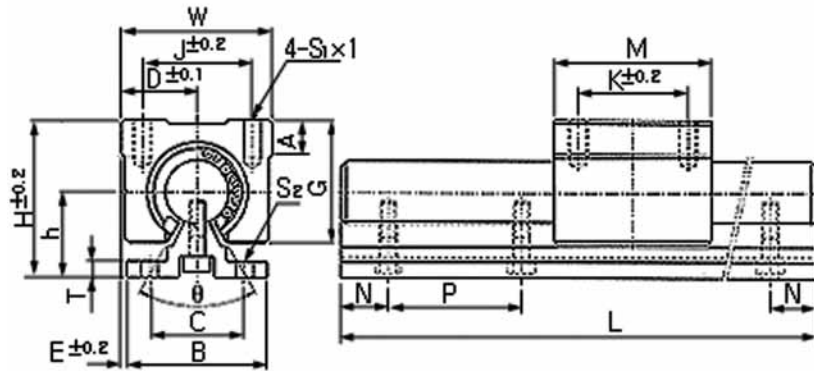
Important Notes
Use with shaft support rail L1780 (page 236).

For support rails see part No. L1780 and L1785. For shafting see part No. L1770.



Linear bushing carriage - Standard Open

use with shaft support rail L1780

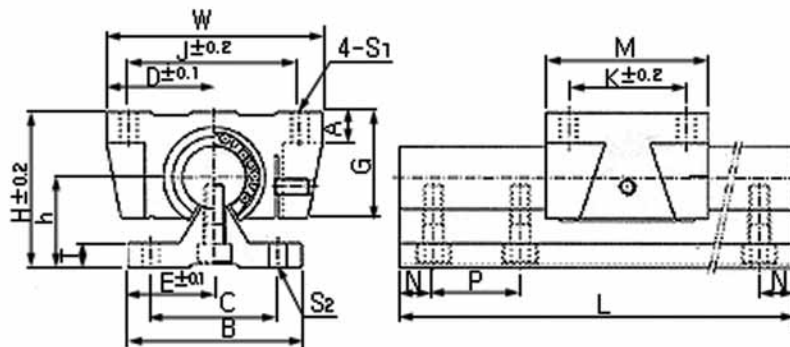


Order No.	Shaft Ø	D	h	H	°	W	G	A	T	M	S ₁ x1	J	K	Max. dyn. load C (N)	Kg
SBR16SA	16	22,5	25	45	80°	45	33	9	5	45	M5x12	32	30	770	0,15
SBR20SA	20	24	27	50	60°	48	39	11	5	50	M6x12	35	35	860	0,15
SBR25SA	25	30	33	60	50°	60	47	14	6	65	M6x12	40	40	980	0,15
SBR30SA	30	35	37	70	50°	70	56	15	7	70	M8x18	50	50	1560	0,15
SBR35SA	35	40	43	80	50°	80	63	18	8	80	M8x18	55	55	1660	0,15
SBR40SA	40	45	48	90	50°	90	72	20	9	90	M10x20	65	65	2150	0,15
SBR50SA	50	60	62	115	50°	120	91	25	11	110	M10x20	94	80	3820	0,15



Linear bushing carriage - Flanged Open

use with shaft support rail L1785



L1755



Technical Notes

Complete unit with bearings. Preload can be applied through the unit for high precision performance.

Tips

Particularly effective for high loads and long stroke applications.

Important Notes

Use with shaft support rail L1785 (page 237).

Order No.	Shaft Ø	D	h	H	W	G	A	T	M	S ₁	J	K	Max. dyn. load C (N)	X Kg
TBR16S	16	31	22,14	40	62	26	8	6	42	M5	50	30	392	0,18
TBR20S	20	34	29,01	50	68	31	10	8	51	M6	54	37	784	0,30
TBR25S	25	41	31,97	60	82	41	12	10	65	M8	65	50	1568	0,60
TBR30S	30	45,5	36,52	70	91	48	12	12	75	M8	75	60	1764	0,90



linear and rotary motion components

Automation