



# L1777



**Material**  
Stainless steel 1,4305.

**Technical Notes**  
Precision ground finish.  
Straightness 0,0003mm/mm.  
Hardness 25-30HRC.

- Tips**  
Modifications on request:
- retainer ring grooves
  - journals
  - drilled holes
  - milled flats.

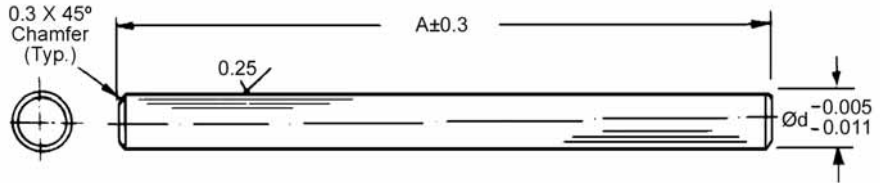
**Machining of shafts available.**  
**Other finishes such as zinc plating on request.**

**Ends machined to your requirements on request.**



## Shafting - Stainless steel

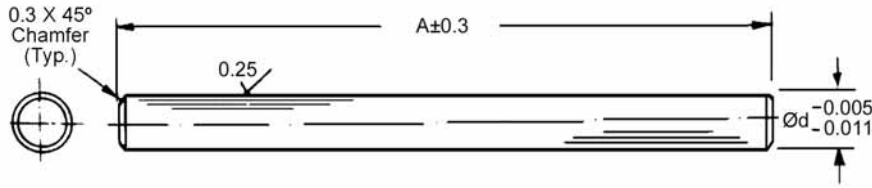
Ø7,8,10 and 12mm



Order No. Ød=7	Order No. Ød=8	Order No. Ød=10	Order No. Ød=12	Length A
S7M-35	S8M-35	-	-	35
S7M-40	S8M-40	-	-	40
S7M-45	S8M-45	-	-	45
S7M-50	S8M-50	-	-	50
S7M-55	S8M-55	S10M-55	-	55
S7M-60	S8M-60	S10M-60	S12M-60	60
S7M-65	S8M-65	S10M-65	S12M-65	65
S7M-70	S8M-70	S10M-70	S12M-70	70
S7M-75	S8M-75	S10M-75	S12M-75	75
S7M-80	S8M-80	S10M-80	S12M-80	80
S7M-85	S8M-85	S10M-85	S12M-85	85
S7M-90	S8M-90	S10M-90	S12M-90	90
S7M-100	S8M-100	S10M-100	S12M-100	100
S7M-110	S8M-110	S10M-110	S12M-110	110
S7M-120	S8M-120	S10M-120	S12M-120	120
S7M-125	S8M-125	S10M-125	S12M-125	125
S7M-130	S8M-130	S10M-130	S12M-130	130
S7M-140	S8M-140	S10M-140	S12M-140	140
S7M-150	S8M-150	S10M-150	S12M-150	150
S7M-160	S8M-160	S10M-160	S12M-160	160
S7M-170	S8M-170	S10M-170	S12M-170	170
S7M-175	S8M-175	S10M-175	S12M-175	175
S7M-180	S8M-180	S10M-180	S12M-180	180
S7M-190	S8M-190	S10M-190	S12M-190	190
S7M-200	S8M-200	S10M-200	S12M-200	200
S7M-220	S8M-220	S10M-220	S12M-220	220
S7M-230	S8M-230	S10M-230	S12M-230	230
S7M-240	S8M-240	S10M-240	S12M-240	240
S7M-250	S8M-250	S10M-250	S12M-250	250
S7M-260	S8M-260	S10M-260	S12M-260	260
S7M-280	S8M-280	S10M-280	S12M-280	280
S7M-300	S8M-300	S10M-300	S12M-300	300
S7M-320	S8M-320	S10M-320	S12M-320	320
S7M-340	S8M-340	S10M-340	S12M-340	340
S7M-350	S8M-350	S10M-350	S12M-350	350
S7M-360	S8M-360	S10M-360	S12M-360	360
S7M-380	S8M-380	S10M-380	S12M-380	380
S7M-390	S8M-390	S10M-390	S12M-390	390
S7M-400	S8M-400	S10M-400	S12M-400	400
-	-	S10M-420	S12M-420	420
S7M-425	S8M-425	-	-	425
-	-	S10M-440	S12M-440	440
S7M-450	S8M-450	-	-	450
-	-	S10M-460	S12M-460	460
S7M-475	S8M-475	-	-	475
-	-	S10M-480	S12M-480	480
S7M-500	S8M-500	S10M-500	S12M-500	500
S7M-550	S8M-550	S10M-550	S12M-550	550
S7M-600	S8M-600	S10M-600	S12M-600	600
-	-	S10M-700	S12M-700	700
-	-	S10M-800	S12M-800	800
S10M-900	-	-	-	900

# Shafting - Stainless steel

Ø3,4,5 and 6mm



## L1776



### Material

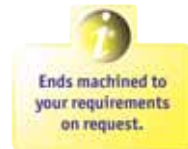
Stainless steel 1,4305.

### Technical Notes

Precision ground finish.  
Straightness 0,0003mm/mm.  
Hardness 25-30HRC..

### Tips

Modifications on request:  
- retainer ring grooves  
- journals  
- drilled holes  
- milled flats.



Order No. Ød=3	Order No. Ød=4	Order No. Ød=5	Order No. Ød=6	Length A
S3M-20	S4M-20	S5M-20	S6M-20	20
S3M-25	S4M-25	S5M-25	S6M-25	25
S3M-30	S4M-30	S5M-30	S6M-30	30
S3M-35	S4M-35	S5M-35	S6M-35	35
S3M-40	S4M-40	S5M-40	S6M-40	40
S3M-45	S4M-45	S5M-45	S6M-45	45
S3M-50	S4M-50	S5M-50	S6M-50	50
S3M-55	S4M-55	S5M-55	S6M-55	55
S3M-65	S4M-65	S5M-65	S6M-65	65
S3M-70	S4M-70	S5M-70	S6M-70	70
S3M-75	S4M-75	S5M-75	S6M-75	75
S3M-80	S4M-80	S5M-80	S6M-80	80
S3M-85	S4M-85	S5M-85	S6M-85	85
S3M-90	S4M-90	S5M-90	S6M-90	90
S3M-100	S4M-100	S5M-100	S6M-100	100
S3M-110	S4M-110	S5M-110	S6M-110	110
S3M-120	S4M-120	S5M-120	S6M-120	120
S3M-125	S4M-125	S5M-125	S6M-125	125
S3M-130	S4M-130	S5M-130	S6M-130	130
S3M-140	S4M-140	S5M-140	S6M-140	140
S3M-150	S4M-150	S5M-150	S6M-150	150
S3M-160	S4M-160	S5M-160	S6M-160	160
S3M-170	S4M-170	S5M-170	S6M-170	170
S3M-175	S4M-175	S5M-175	S6M-175	175
S3M-180	S4M-180	S5M-180	S6M-180	180
S3M-190	S4M-190	S5M-190	S6M-190	190
S3M-200	S4M-200	S5M-200	S6M-200	200
S3M-220	S4M-220	S5M-220	S6M-220	220
S3M-240	S4M-240	S5M-240	S6M-240	240
S3M-250	S4M-250	S5M-250	S6M-250	250
S3M-260	S4M-260	S5M-260	S6M-260	260
S3M-280	S4M-280	S5M-280	S6M-280	280
S3M-300	S4M-300	S5M-300	S6M-300	300
S3M-320	S4M-320	S5M-320	S6M-320	320
S3M-340	S4M-340	S5M-340	S6M-340	340
S3M-350	S4M-350	S5M-350	S6M-350	350
S3M-360	S4M-360	S5M-360	S6M-360	360
S3M-370	S4M-370	S5M-370	S6M-370	370
S3M-380	S4M-380	S5M-380	S6M-380	380
S3M-400	S4M-400	S5M-400	S6M-400	400
S3M-420	S4M-420	S5M-420	S6M-420	420
S3M-440	S4M-440	S5M-440	S6M-440	440
S3M-460	S4M-460	S5M-460	S6M-460	460
S3M-480	S4M-480	S5M-480	S6M-480	480
S3M-500	S4M-500	S5M-500	S6M-500	500
S3M-520	S4M-520	S5M-520	S6M-520	520
S3M-540	S4M-540	S5M-540	S6M-540	540
S3M-560	S4M-560	S5M-560	S6M-560	560
S3M-580	S4M-580	S5M-580	S6M-580	580
S3M-600	S4M-600	S5M-600	S6M-600	600

