

P1960

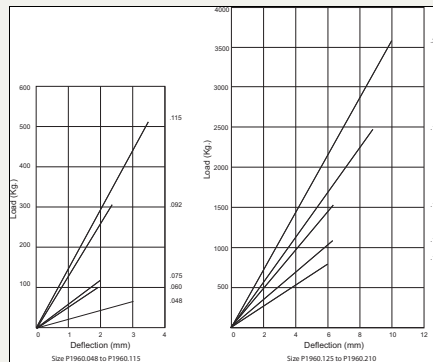
CAD

Material

Cast iron body with silver zinc plated thread.
Synthetic rubber base (65-70 Shore A), with anti-slide cavity.

Technical Notes

Suitable for machinery with low frequency vibrations and for irregular floors.

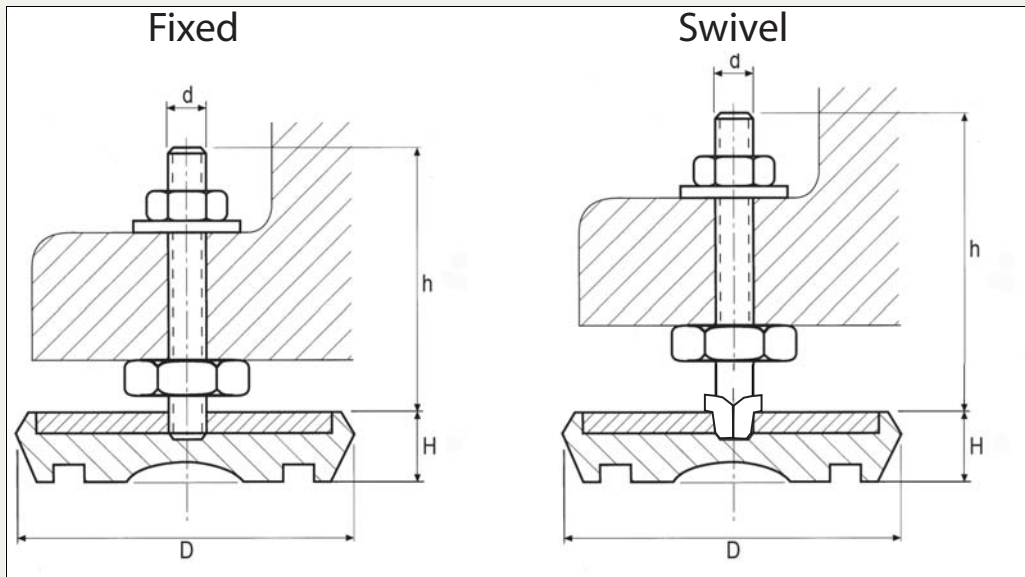


Order No.	Load range (Kgf.)	Ø D	H	d	h	⊕ Kg
P1960.048	0 - 80	48	23	M8	40	0,10
P1960.060	50 - 120	62	25	M10	83	0,25
P1960.075	80 - 150	75	30	M12	90	0,42
P1960.090	120 - 300	90	33	M12	90	0,62
P1960.115	250 - 500	115	39	M16	110	0,99
P1960.125	400 - 800	125	45	M16	110	1,40
P1960.150	600 - 1,100	150	55	M16	110	2,17
P1960.170	1,000 - 1,600	170	57	M16	110	2,91
P1960.187	1,400 - 2,400	187	70	M20	118	4,49
P1960.210	2,000 - 3,500	210	75	M20	118	5,94



P1961

CAD



Material

Cast iron body with zinc plated thread. Synthetic rubber base (65-70 Shore A), with anti-slide cavity.

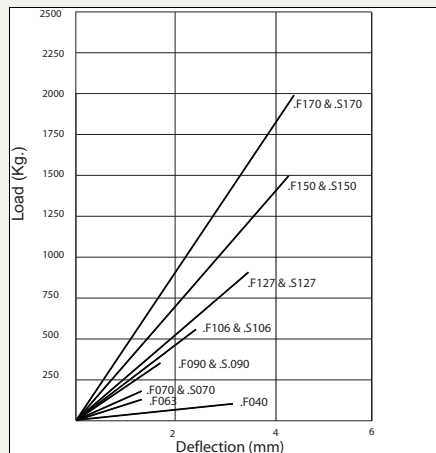
Technical Notes

Suitable for medium and high frequency vibrations and with smooth floors.

Tips

For inclined floors use the swivel base version (M12 and M16).

The swivel base versions have a separate screw which rests in the concave cup on the top portion of the foot body.

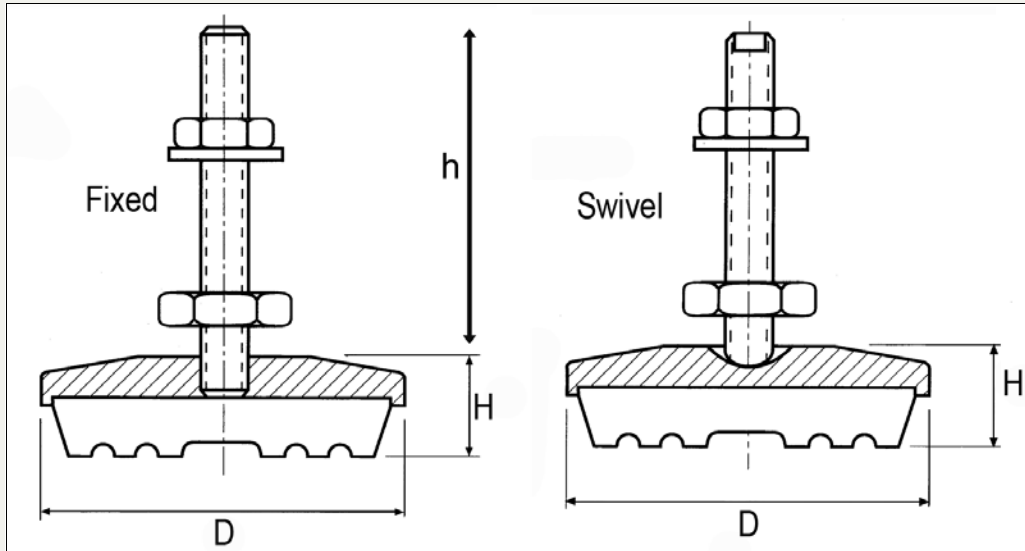


Order No.	Style	Load range (Kgf.)	Ø D	H	d	h	⚖️ Kg
P1961.040-F	Fixed	0 - 60	42	15	M8	37	0,07
P1961.063-F	Fixed	30 - 100	63	18	M10	83	0,22
P1961.070-F	Fixed	80 - 150	70	22	M12	90	0,36
P1961.090-F	Fixed	100 - 350	90	26	M12	90	0,60
P1961.106-F	Fixed	300 - 600	108	30	M16	110	0,94
P1961.127-F	Fixed	500 - 900	127	34	M16	110	1,31
P1961.150-F	Fixed	800 - 1,500	150	38	M16	110	2,01
P1961.170-F	Fixed	1,300 - 2,000	170	42	M16	110	2,56
P1961.070-S	Swivel	80 - 150	70	22	M12	90	0,36
P1961.090-S	Swivel	100 - 350	90	26	M12	90	0,60
P1961.106-S	Swivel	300 - 600	108	30	M16	110	0,94
P1961.127-S	Swivel	500 - 900	127	34	M16	110	1,31
P1961.150-S	Swivel	800 - 1,500	150	38	M16	110	2,01
P1961.170-S	Swivel	1,300 - 2,000	170	42	M16	110	2,56



P1963

CAD



Material

Cast steel (GGG-40) coated body with zinc plated thread.
Polyurethane base (80-85 Shore A).

Technical Notes

High resistance machine mounts, little deflection and maximum adherence due to shape of base.
Resistant to water, oil, high and low temperatures, abrasions and shocks.

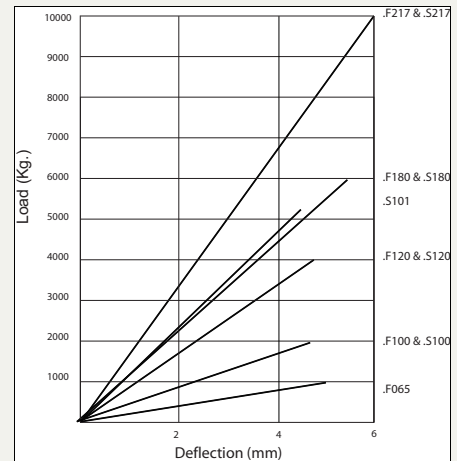
Tips

Suitable for heavy machining and conditions where there is high risk of

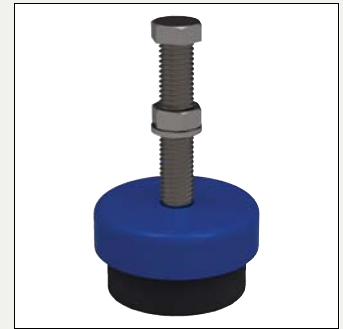
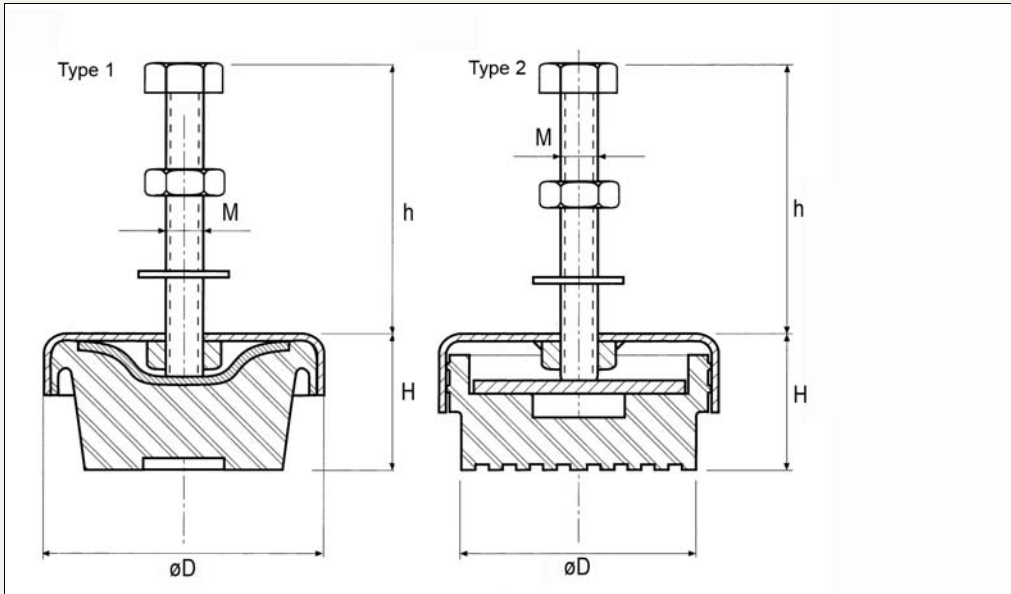
deterioration due to oil and other substances.

Important Notes

Also available in stainless steel - see product number P1968.



Order No.	Type	Load range (Kgf.)	Ø D	H	Thread	h	Kg
P1963.065-F	Fixed, Polyur	200 - 800	65	27	M12	90	0,38
P1963.100-F	Fixed, Polyur	800 - 2,000	100	30	M16	110	0,83
P1963.120-F	Fixed, Polyur	2,000 - 4,000	123	33	M20	120	1,41
P1963.180-F	Fixed, Polyur	4,000 - 6,000	173	40	M20	115	2,75
P1963.217-F	Fixed, Polyur	5,000 - 10,000	217	48	M24	145	5,47
P1963.100-S	Swivel, Polyur	500 - 2000	100	30	M12	95	0,60
P1963.101-S	Swivel, Rubber	80 - 300	100	30	M12	120	0,85
P1963.120-S	Swivel, Polyur	2,000 - 4,000	123	31	M20	120	0,28
P1963.121-S	Swivel, Rubber	500 - 2,000	123	33	M16	130	1,43
P1963.180-S	Swivel, Polyur	4,000 - 6,000	173	40	M20	130	2,77
P1963.217-S	Swivel, Polyur	5,000 - 10,000	217	48	M24	150	5,45



P1964

CAD

Material

Coated steel body with special bowl shape to protect against corrosion. Synthetic rubber base (75 Shore A).

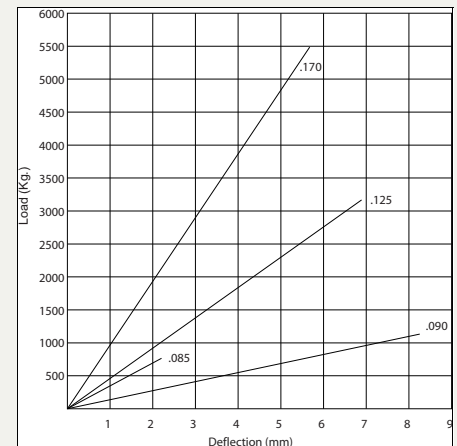
Technical Notes

Provides long life and outstanding stability. Great adherence to the floor, due to excellent grip property. Quick and easy to install - for machine levelling.

Tips

Suitable for heavy machinery with strong vibration/impact such as plastic

injection, moulding machines, presses, guillotines etc.



Order No.	Type	Load range (Kgf.)	Ø D	H	M	h
P1964.050	type 1	0 - 100	50	24	M8x50	40
P1964.075	type 1	100 - 350	76	35	M10x75	65
P1964.085	type 2	350 - 600	90	40	M12x90	80
P1964.090	type 2	600 - 900	90	49	M16x100	90
P1964.125	type 2	1,000 - 2,500	125	52	M16x100	90
P1964.170	type 2	2,500 - 4,000	170	57	M20x130	120