

P1822

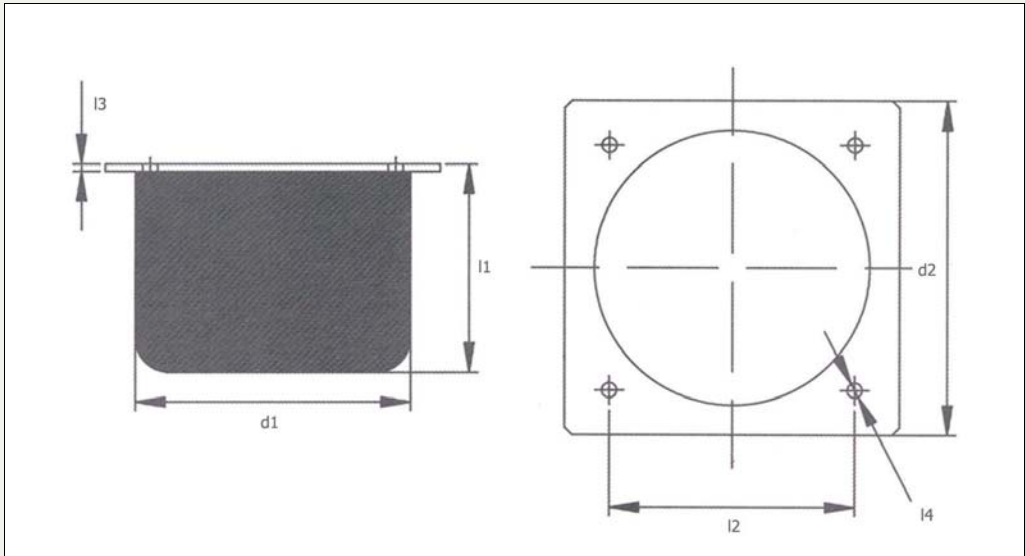
Material

Rubber on silver zinc plated steel.
Shore stainless steel also available.
Shore 55 A.

Order No.	d ₁	l ₁	d ₂	l ₂	Deflection	Energy to 1m/s Kg.m	Max. load (Kg)
P1822.040-032	40	32	M8	28	14	5	850
P1822.050-040	50	40	M10	33	17	10	1270
P1822.063-050	63	50	M10	33	20	20	1950
P1822.080-063	80	63	M12	37	25	40	3250
P1822.100-080	100	80	M12	37	30	80	4900
P1822.125-100	125	100	M16	45	40	160	7800
P1822.150-125	150	125	M16	45	52	320	12300
P1822.160-125	160	125	M16	45	52	320	12300
P1822.200-160	200	160	M20	49	65	630	19100
P1822.250-200	250	200	M20	49	80	1250	30500
P1822.315-250	315	250	M24	60	105	2500	48700



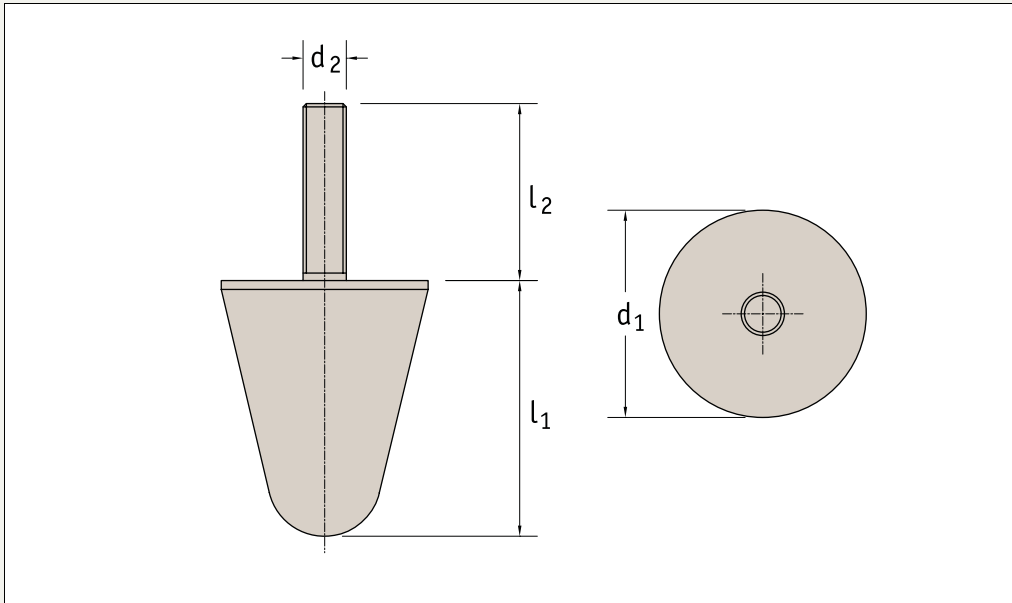
P1823



Material

Rubber on silver zinc plated steel.
Shore stainless steel also available.
Shore 55 A.

Order No.	d ₁	l ₁	Thread	d ₂	l ₂	l ₃	l ₄	Energy to 1m/s Kg.m	Max. load (Kg.)
P1823.040-032	40	32	M8	50	40	3	5,5	5	850
P1823.050-040	50	40	M-10	63	50	4	6,5	10	1270
P1823.063-050	63	50	M-10	80	63	6	6,5	20	1950
P1823.080-063	80	63	M-12	100	80	6	9	40	3250
P1823.100-080	100	80	M-12	125	100	8	9	80	4900
P1823.125-100	125	100	M-16	160	125	8	11	160	7800
P1823.150-125	150	125	M-16	-	-	45	-	-	-
P1823.160-125	160	125	M-16	200	160	10	11	320	12300
P1823.200-160	200	160	M-20	250	200	10	13	630	19100
P1823.250-200	250	200	M-20	315	250	12	13	1250	30500
P1823.315-250	315	250	M-24	400	315	12	15	2500	48700



P1824

CAD

Material

Rubber on silver zinc plated steel.
Rubber hardness - 55 Shore A.
Also available in 304 stainless steel on request.

Tips

These anti-vibration cones or bumpers are used to reduce vibration and shock. Their conical shape ensures that, when used in a row, the buffers spread loads over a number of cones -

reducing the effects of possible overloading.

Important Notes

The Working load is 25 percent of the maximum load. The Working load should not exceed 35 percent of The maximum load.

Order No.	d ₁	l ₁	d ₂	l ₂	Working axial load (Kgf)	Max. axial load (Kgs)
P1824.020	20	20	M6	18	17,5	70
P1824.025	25	20	M8	20	25	100
P1824.026	25	30	M6	18	30	120
P1824.022	22	55	M8	25	15	100
P1824.030	30	30	M6	17	37,5	150
P1824.031	30	30	M8	20-23	37,5	150
P1824.032	30	36	M8	23	40	160
P1824.040	40	30	M8	23	60	240
P1824.041	40	50	M8	23	50	200
P1824.050	50	63	M8	35	90	360
P1824.051	50	48	M10	25	95	380
P1824.052	50	58	M8	20	100	400
P1824.053	50	64	M8	35	92,5	370
P1824.060	60	60	M14	62	137,5	550
P1824.063	63	60	M12	37	110	440
P1824.070	70	60	M12	35	137,5	550
P1824.075	75	90	M12	37	130	520
P1824.090	90	74	M16	45	275	1100
P1824.095	95	83	M16	55	250	1000
P1824.096	95	82	M16	45	275	1100
P1824.110	110	88	M12	27	280	1120
P1824.111	110	120	M12	37	280	1120